

Lindfield *Life*

Inc. Scaynes Hill & Walstead

Local village talk,
by the village

Dec. 2014 Issue #69

Free

Christmas services full listings

page 24

New Helena Hall book published

page 16

Peter Voigt poses for portrait

page 15



METROBUS Routes **82** and **270**

...serving Lindfield Monday to Saturdays

Catch the bus at stops near to
the Post Office and the Common

Route **82** every 2 hours

Calling at:

- Crawley • Copthorne
- Crawley Down • Turners Hill
- Wakehurst Place • Ardingly
- Lindfield • Haywards Heath

Route **270** hourly

Calling at:

- East Grinstead • Ashurst Wood
- Forest Row • Wych Cross
- Chelwood Gate • Danehill
- Horsted Keynes • Lindfield
- Haywards Heath • Burgess Hill
- Hassocks • Pyecombe
- Patcham • Brighton



For timetables, fares, tickets and more
visit metrobus.co.uk



[facebook.com/gometrobus](https://www.facebook.com/gometrobus)



twitter.com/metrobus

EDITORIAL

By David Tingley, Editor

I hope you like the cover photo which I took at last year's **Village Festival Night** (see **page 4**). Even if you don't get chance to go, events like that give many in Lindfield the chance to get together around a common theme.

Like **Bonfire Night** last month (**page 5**). Around 12,000 people packed onto the common to watch the fabulous firework display prepared by Lindfield Bonfire Society. Thank you LBS!

Back on the Christmas theme, we have information from **Lindfield Rural Parish Council** about winter plans and arrangements on **page 40**. All three Lindfield churches - plus St Augustine's in Scaynes Hill - have listed all their **Christmas services** for the period. Their pull-out feature starts on **page 25**.

And lastly on this, **Mid Sussex District Council** share the dates change for **bin collections** over the festive period. Get the lowdown on **page 32**.

In other news we have a good selection of **Lindfield news items**, starting just over the page on **page 4**.

Claire Cooper went to talk to two Lindfield history fans, Linda Grace and Margaret Nicolle, about a book they have put together featuring the **journal of former village resident Helena Hall**. 'A woman Living in the Shadow of the Second World War' is published this month giving an insight into both the everyday activities at home and the national and international events. Read about what they learnt on **page 16**.

Page 15 gives us a unique view of a man who has long been associated with Lindfield but has perhaps rarely been seen. Resident and professional photographer James Winspear asks **Peter Voigt** to walk in front of the lens for his feature **Lindfield Portraits**. Excellent; a brilliant idea, thanks James.

I hope you enjoy reading this issue ahead of the busyness of Christmas as it gets ever closer. And don't forget all our own High Street shops for some great gift ideas too. I'll see you there! Happy Christmas all.

Issue #69 – December 2014 –
4,400 copies printed

Next magazine copydate:
8th December 2014

Next magazine published:
28th December 2014

Lindfield Life

The Barn, Hurstwood Grange,
Hurstwood Lane, Haywards
Heath, West Sussex, RH17 7QX
Telephone 01444 884115
www.lindfieldlife.co.uk

Editor: David Tingley
Assistant: Claire Cooper

<editor@lindfieldlife.co.uk>

Advertising: David Tingley
<ads@lindfieldlife.co.uk>

Disclaimer: The opinions expressed within
the magazine are of the individual authors
and not necessarily those of the editors.

Whilst the editors welcome contributions &
photographs, this is on the understanding
that there is no obligation to include them
and that the item may be edited & that
there is no breach of copyright. Neither the
editors nor the publisher accept any liability
in respect of the content of any article,
photo or advertisement.

Lindfield Life

Published
by Kipper



David Tingley
A busy Festival Night on
the High Street

norto5^o
kidz

Pre-school Daycare Nursery



**Call us
today!**

Get peace of mind knowing that you can
check in via our webcam at any time.

www.norto5kidz.com
0845 004 5226

Lindfield Cuckfield Burgess Hill
Hickmans Lane Whitmans Green The Brooks

Vere
Consulting Ltd

Accountants and Tax Consultants

Experienced accountants providing small
businesses and individuals with a tailored
accountancy and tax service, including:-

Accounting Systems, Company Secretarial,
Management Accounts, Bookkeeping, VAT,
Budgeting, Corporation Tax, Capital Gains Tax,
Self Assessment, Statutory Accounts & Payroll

For a free, no obligation, quote or informal chat
please call or email to discuss how we can help.

Telephone: 07971 816357

email: info@vereconsulting.co.uk

website: www.vereconsulting.co.uk

We'd love to hear from groups, organisations and individuals about what's happening locally. Include a photo if you can. Email your stories to editor@lindfieldlife.co.uk

La Touche crowned at Salon Awards

La Touche Beauty, Lindfield, has been awarded Guinot Crown Salon 2015. This title places it in the top ten percent of Guinot's highest achieving salons in the UK and Ireland.

This coveted award is in its 15th year and winners are chosen from Guinot's portfolio of 1,200 salons.

La Touche Beauty received the award from Chris Gillam, the new Managing Director of Guinot UK, at a conference and gala dinner held at the Hilton St George's Park, Burton on Trent.

Touchell Thaddeus, salon owner from La Touche Beauty commented, "This Crown status award is the icing on the cake after a wonderful first year at our new High Street location. We would also like to acknowledge our lovely clients, who kindly support us so we can do what we do best!"





ELECTRICAL
WWW.CW-ELECTRICAL.COM

FREE QUOTES
& FREE SAFETY
CHECKS

<ul style="list-style-type: none"> Free Safety Checks Free Quotes Circuit Testing and Certification Kitchen and Bathroom Re-Wiring & Alterations Extra Lights & Sockets Fuse Board Upgrades Complete Re-wires Telephone Systems 	<ul style="list-style-type: none"> TV Points Full Entertainment Set-up Under floor Heating Security Systems Extensions Storage heaters Immersion Heaters Fault Finding Outside Power and Lighting
---	--



NICEIC DOMESTIC INSTALLER



Cheekatrade

t: 01444 462034
 m: 07807 355 632
 e: chris.walter@cw-electrical.com

NICEIC Registered
 Qualified to the latest 17th Edition

Is your child a Scholar?



Registered Charity
Number 270757

Scholarship Day
Saturday, 7 February 2015

COPTHORNE
 PREPARATORY SCHOOL

01342 712311
www.cophthorneprep.co.uk



Festival Night

The annual Lindfield Festival Night takes place on Tuesday 2nd December, with the High Street closing between 5.30-9.30pm.

Father Christmas will take up his post in the grotto at the United Reformed Church, expecting to arrive at 6pm. The queue is always long, so be prepared for a wait!

Stalls selling gifts and goodies, drinks and yummy snacks will line the High Street.



Raffle for giant robin


High Street deli and coffee shop Field & Forrest is holding a charity raffle this month.

Owners Andrew and Jo Blackburn decided to run the event after first seeing the 2.5kg chocolate Christmas Robin by supplier James Chocolates. "It's an incredible size!" Andrew exclaimed. "I imagine the only way to eat such a quantity of chocolate would be to share it with friends. But what an excellent party!"

The Robin, worth £80, is first prize in the draw in aid of St Peter & St James Hospice. Second prize is a £30 Christmas Hamper and third is a £10 Field & Forrest gift voucher. There are 250 tickets available at £1 each. The draw will be held on Saturday 20th Dec at 3pm in the shop.

Lucy Locksmith

No Callout Charge
The Callout



BRIGHT FM & CHECKATRADER
"Top Trader of the Year"
Award Winner

Rapid Response • Police checked
Free Estimates • No VAT • OAP Discount
Locks Changed & Upgraded (To BS3621)
uPVC Specialist • Window locks • Garage locks
Lock outs, Break ins, all makes of locks.

**JUST MOVED? WHO ELSE HAS KEYS?
CHANGE LOCKS FOR PEACE OF MIND?**

Always
Checkatrade
Before you use them

07780 840462

STORE THIS NUMBER NOW, YOU MAY NEED IT!
www.lucylocksmith.co.uk lucylocksmith@o2.co.uk

HANDEL'S MESSIAH

"GOING TO A TRADITIONAL PERFORMANCE OF
MESSIAH WILL NEVER BE THE SAME AGAIN"

DIRECTOR JOHN RAMSTER - MUSIC DIRECTOR AND CONDUCTOR STEPHEN HOSE

"A powerful and affirming performance ... a delight."
Opera Now

"That was the Messiah I have waited all my life to hear."
Wallingford



All Saints Church
High Street
Lindfield
West Sussex RH16 2HS
7.30pm
Saturday 6 December 2014
£12, £10 concessions
£5 children
(cheques payable to
Tiger Arts)
Box office: 01444 482 405
www.allsaintslindfield.org





The Merry Opera Company
www.merryopera.co.uk
Registered charity no. 112799

What a 'Good Night'!

"Feedback from the public on the display has been very positive and we are delighted that everyone enjoyed it so much. We are also pleased that we have found a way to reinstate our Good Night sign and stay within regulations!"

Mark Tampion-Lacey,
Lindfield Bonfire Society



BETH MERCER
PHOTOGRAPHY

Photo: Beth Mercer. Inset Photo: Elisa Boulding

Masters & Son

ESTD 1854

Supporting & Caring Funeral Services

Masters House
Lewes Road, Lindfield
West Sussex RH16 2LE

01444 482107
ianmasters@mastersandson.com
www.mastersandson.com

A decorative graphic of a fern leaf, rendered in a light, white color, positioned in the bottom right corner of the text area.

A collage of six images arranged in a 2x3 grid. The top-left image shows a duck on a pond. The top-right image shows a street scene with buildings and a bridge. The middle-left image shows a beehive with a bird perched on top. The middle-right image shows stone pillars. The bottom-left image shows purple flowers. The bottom-right image shows pink roses.

The Lindfield Arts Festival needs you!

Following on from this year's hugely successful arts festival, the committee is now looking for a creative soul to lead the team and help organise the weekend for 2015. Are you passionate, imaginative and willing to dedicate some time for your village? Then you're the next festival director! The 6th annual Lindfield Arts Festival, to be held on 18th-20th September 2015 could be the best yet. Why don't you make sure it is?!

Please contact Esther, one of this year's directors, if you have any questions or to put yourself forward for this hugely rewarding job, on esther@lindfieldartsfestival.com or 01444 487457.

British Heart Foundation: Chase the Pud

On Sunday 7th December the British Heart Foundation will hold its annual fundraising 'Fun-Run' - where everybody dresses up as Santa - through the beautiful woods and fields which surround Ardingly College.

This year three events are being organised: a 10km run/jog (The Full Pud), a 5km run/jog (The Half Pud) - both starting at 9.45am. There is also a 5km walk which starts at 10.15am and includes a children's competition. Medals are given to all participants and some great prizes can be won on the day.

Whether you're a keen runner, a gentle jogger or simply enjoy a gorgeous walk with the dog, this has to be a great way to spend a Sunday morning and help raise vital funds for life-saving research.

Pre-event registration is £10 for adults, which includes your free Santa outfit. For more information and to register go to bhf.org.uk/chasethepud or call 0300 330 3322 or call John Higgins, Event Organiser, on 01444 482183.

CARIBBEAN | USA | EUROPE | MIDDLE EAST | INDIAN OCEAN | INDIA | FAR EAST

WESTERN & ORIENTAL

TRAVEL WITH THE EXPERTS

A Western & Oriental holiday is a slice of paradise; a journey set at your pace; a discovery of a whole new culture

Put your holiday in safe hands with our Destination Experts

FAMILY ADVENTURES | BEACH HOLIDAYS | PRIVATE ITINERARIES

020 3588 6122
Visit www.westernoriental.com

ABTA

Part of Western and Oriental Travel Ltd

Helping you care for your family

Wills

Most of us know we should have one! But dying without one is pretty disastrous for a family. Even an existing one should be kept up to date.

I can help you check its all valid.

Trusts

Whether its for tax advantages or just to make sure what you leave behind goes to the right people at the right time - trusts should be a vital part of your plan.

I can help you protect your assets.

LPAs

A Lasting Power of Attorney enables the right person to help make decisions for someone you love who is close to losing mental capacity.

I can talk this option through with you.



For a free initial chat about your own situation speak to Sean Collins on 07710 113450 or email sean@meridianwills.net

Meridian Wills & Trusts Ltd

Your LOCAL Satellite Tv & Aerial Specialist

www.norsat.co.uk

est 1992

- Digital TV/ FM /DAB Aerials
- Digital Tv Aerials - Upgrades - Repairs - Service
- Extra Tv / FM / Sat / Telephone Points
- Discreet Dish Installations
- Realign - Repair - Service
- Plasma / LCD / LED Installations
- Multipoint Systems
- Domestic & Commercial Systems
- Sky, Sky + , Sky + HD / New systems & upgrades
- Freesat Systems - Standard and High Definition
- Freeview Aerials / Receivers/ Recording systems
- Foreign Satellite for French, German, Spanish, Italian & More

Proud members of

Checkatrade.com
Where reputation matters

sky | Your local Sky expert

freesat

Freeview

NORSAT

t: 01444 318089



10% OFF

any aerial work with this advert



The Green Tree Gallery at Borde Hill Garden

Christmas Gifts to suit all pockets!

From one-off, unique paintings and sculpture to stocking fillers, Christmas cards, decorations and everything inbetween!

Plentiful free parking right outside.

Open Tuesday-Sunday, see website for opening times.

www.greentreegallery.co.uk

01444-456560



RiverPeak Wealth offers expert independent investment and financial advice

We all want peace of mind when it comes to our finances.

We often worry if we're doing the right thing. Sometimes we do nothing at all. Well, we can help.

- Investing
- Tax Planning
- Retirement Planning
- Estate and Inheritance Planning
- Life Cover and Protection

We make it easier for you to enjoy the things in life that are really important to you.

So why not call us for a free initial exploratory chat on 01825 791421

Or email us at info@riverpeakwealth.com



01825 791421 | www.riverpeakwealth.com

RiverPeak Wealth... joined up financial thinking

Tax Planning and some aspects of estate and inheritance planning are not regulated by the Financial Conduct Authority. RiverPeak Wealth Limited is an Appointed Representative of Financial Limited, which is authorised and regulated by the Financial Conduct Authority, FCA No: 608714

Drama Classes in Lindfield

Limepalm Productions deliver fun, creative drama classes on Saturday mornings for children up to 11. Build self-confidence and meet other children in a safe, relaxed and creative environment. Games and imaginative play exploring drama and movement, speaking and listening.

Classes led by Lindfield resident and professional theatre director Robin Belfield. Book now for Jan 2015. Limited places!

For full details visit www.limepalmproductions.com
or email: limepalmproductions@gmail.com

New class starting
Jan 2015 for Reception
and Sept 2015
school starters



Great Walstead's new Astro pitch

On Saturday 18th October, Great Walstead School was delighted to welcome back Ms Ashleigh Ball, Bronze Olympic medal winner, England Hockey player and Old Great Walsteadian, to officially open the school's latest facility, a new Astro pitch.

The morning started with the official unveiling of the named 'Ashleigh Ball Astro Pitch' and a brief address by Colin Baty, Headmaster, and Bobby Skelton, Director of Sport. Past pupils were then invited to take part in a number of fun and friendly matches against current pupils, with Ms Ball refereeing. Current parents and the Great Walstead Sports Department then took to the pitch to play a friendly but competitive game. The teaching staff did their best to give the parents a run for their money but lost out to a stronger parent team.

Bobby Skelton comments: "Sport has gone from strength to strength at Great Walstead in recent years. This modern facility will mean we can push forward a number of sports, including hockey and tennis, which have proved so popular at the school."

Ms Ball delighted the school pupils by signing hockey sticks and showing them her bronze Olympic medal. When asked how she felt about returning to her old school, Ms Ball commented: "The school has developed and grown but the essence still remains the same. I have fond memories of the woods and the outdoor space. I was part of a particularly sporty year. We did well at netball as well as hockey."



"Today is a real honour, I can't believe I have an Astro pitch named after me. It was a real pleasure to be invited back."

Ms Ball made reference to her hopes of competing in the 2016 Games in Rio, something the school will watch with great anticipation and pride.

dwell
architecture + design

Dwell are local Chartered Architects specialising in residential alterations, conservation and bespoke homes with a focus on sustainable design.

Call us to discuss your project, or visit our website to find out more

01444 831800
www.dwellarchitecture.com

RIBA Chartered Practice

The Weald Theatre Group's panto

By Anne Skinner

This is the 72nd panto for The Weald Theatre Group and we have raised thousands of pounds for local charities in this time. This year's panto is Robin Hood and The Babes in the Wood and the cast is made up of children and adults from the local area, including Haywards Heath, Burgess Hill, Cuckfield and Lindfield.

From Lindfield we have father and son duo Jim and James Horton, who play the parts of Nurse Norah and Beelzebub. Our lovely leading ladies are Beth Bryant as Robin Hood and Sarah Milton as Maid Marion. Together they have performed in over 30 pantos over the years.

The show is written and directed by Lance Milton, who has been involved with the group for the last decade both on and off the stage. This year Lance and Sarah's eldest daughter Emily has her chance to tread the boards as one of the children in the chorus. More than 50 children turned up at auditions and they are split into two teams, taking it in turns to perform on alternate nights. The kids really love rehearsals and performing but are also mindful that they are raising funds for children less fortunate than themselves whilst having a great time. This year we donated £3,500 to three local charities. The Early Birth Association, Chestnut Tree Hospice and the Kangaroo Group. We welcome suggestions from the public for nominations for the forthcoming panto. So if you have favourite children's charity let us know. Please email anneskinner0@gmail.com



Spink.

Exciting job opportunities



Thriving PR and marketing agency requires creative and dynamic individuals, at both junior and senior level, to work on leading health and consumer brand campaigns.

Experience in health or consumer PR/marketing is desirable but not essential.

To discuss the opportunities available, contact Justin on 01444 811099 or justin@spinkhealth.com

spinkhealth.com

THE CLEANING SERVICE **BELLE CASA**

~ Beautiful Homes ~

We know how hard it can be to find a dependable and honest cleaner, which is where we can help.

We can offer you professional cleaning and ironing for a fully inclusive rate of only £10.75 per hour (minimum of 2 hours per week).



All of our cleaners are specially selected, and insured, and you will receive the same cleaner each week.

So, if you'd like to take the pressure off keeping up with your household chores, then call us today on:

01444 420042

(answerphone available outside office hours) or visit our website:

www.bellecasa.co.uk

Tufnells

Home & Boutique



Fabulous Festive Gifts, Decorations,
Tableware, Candles & more @
59 & 75 High St Lindfield

www.facebook.com/Tufnells

Making new friends is easy!

Every day
is an
open day

An Exceptional
Co-educational Nursery
and Preparatory School



"The size of the school facilitates a nurturing, family atmosphere where people are known and valued as individuals."

Independent Schools Inspectorate Report, 2014



**TAVISTOCK &
SUMMERHILL SCHOOL**

We put learning at the heart of all we do

www.tavistockandsummerhill.co.uk

Summerhill Lane, Lindfield, Haywards Heath,
West Sussex RH16 1RP. Tel: 01444 450256

Tavistock & Summerhill School is
a registered charity number 800096.

Art Exhibition at St Augustine's



On the evening of Tuesday 4th November 2014 St Augustine's CEP School, Scaynes Hill held its annual Art Exhibition. As always the children's work was of a very high standard, being influenced by many renowned artists. The diverse works of art included pottery, printing and observational drawings. The glowing apple sculptures, made from willow, covered in extra strong tissue and then painted, certainly stole the show!



Mid Sussex Decorators

**Painting, Decorating
Interior & Exterior**

**Guttering, Soffits, Facia Boards;
installed, repaired, cleaned**

**Leaf/moss guard for guttering
supplied and fitted**

*Family Business. Established over 20 years.
Fully Insured.*

**01273 841964
01444 831147
07535 760954**

Jakki Todd The Lindfield Beautician

Jakki is an Aesthetician with over 30 years experience offering Beauty Treatments, Electrolysis & IPL Permanent Hair Reduction in a private home with parking facilities.

- Facials
- Waxing
- Electrolysis
- Aromatherapy
- St Tropez Tanning
- Red Vein Removal
- Manicures and Pedicures
- IPL Permanent Hair Reduction

Gift Vouchers Available

For full Treatment List & Prices visit www.jakki.net
Email: info@jakki.net
Tel: 01444 487474

APPOINTMENTS ONLY

Now Offering GELISH soak off Nail Polish that lasts up to 2 weeks

beauty therapy and electrolysis

Would you like clear, independent advice on your property finance?

At Bonaventure Finance we can help with all areas of your property finance no matter how complex or seemingly straightforward they may appear.

- Residential Purchase and Remortgage
- Investment/Buy to Let Loans
- First Time Buyers
- Commercial Lending
- Agricultural Debt
- Specialist Debt Solutions (see website for more details)



Contact us for a free initial chat on 01444 849420 or email enquiries@bonaventurefinance.co.uk www.bonaventurefinance.co.uk

YOUR HOME MAY BE REPOSSESSED IF YOU DO NOT KEEP UP REPAYMENTS ON YOUR MORTGAGE. Bonaventure Finance Limited is an Appointed Representative of Teneo Limited which is authorised and regulated by the Financial Conduct Authority. Bonaventure Finance charge a fee of \$495.00 upon application and may charge a fee of up to 1% of the loan amount for arranging finance subject to your circumstances.



Autumn / Winter Collections

THE LEAPING HARE BOUTIQUE

69 HIGH STREET, LINDFIELD
01444 482188

www.leapingharesussex.com

Christmas Eve Concert

ARDINGLY CHORAL SOCIETY
conducted by Robert Hammersley

Haydn Nelson Mass & Carols

ARDINGLY COLLEGE CHAPEL

Concert begins 8:00pm
(6:15pm for those wishing to participate)

For further information contact Mrs S Venham 01273 831264

Concert in aid of St Peter & St James Hospice
Registered Charity No. 1056114

www.ardinglychoralsociety.org.uk
Registered Charity No. 1123464

FREE ENTRY

St Peter & St James

Peter Voigt

LINDFIELD PORTRAITS



Portraits of the popular Lindfield craftsmen by resident and professional photographer James Winspear



Helena Hall's war journals

By Claire Cooper

Marshal Voroshilov's army has halted the German advance on Leningrad where an 'immense and bloody battle is going on day and night.' A fine hot day. I spent it at Birchgrove picking blackberries and made blackberry jelly and apple jam in the evening, There was no raid.

It's 1941 and Britain is at war with Germany. But in Lindfield, like many other Sussex villages, life went on, with villagers determined to 'keep calm and carry on' against the backdrop of war.

Over the years many accounts have been written in the aftermath of World War II in an attempt to capture life on the Home Front.

But a series of diaries, meticulously kept by a Lindfield ARP warden, give a unique first-hand account of the war years and have now been published in a fascinating new book.

'A Woman Living in the Shadow of the Second World War' is Helena Hall's daily diary of the war years from 1940 to 1945.

The book has been painstakingly put together by Lindfield residents Linda Grace and Margaret Nicolle over the last four years. "We read the diaries and fell in love with them," said Margaret.

They found themselves enthralled by Miss Hall's personal account of village life. "We knew that we were reading something really special," said Margaret. "The

diaries are absolutely fascinating and we quickly realised that just to publish the bits about Lindfield wouldn't be a true tribute to what Helena had done."

The East Sussex Records Office at Lewes became a second home, as the pair spent many enjoyable days reading, transcribing and editing.

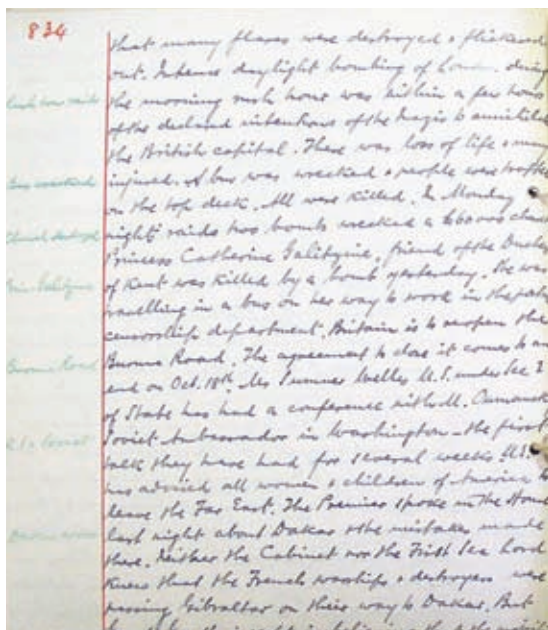
With almost 4,700 handwritten pages bound in 34 volumes it was a huge task. "Helena's handwriting is beautiful but everything is written continuously with no paragraph breaks," said Linda. "She clearly didn't want to waste any paper!"

In her journal Helena writes about everyday life, such as inviting people to tea, alongside momentous national and international events like the bombing of the cities, the fluctuating fortunes of the Allied armies, Churchill's latest speech and Soviet retreats on the Eastern Front.

Her entries also show how much energy and commitment ordinary people put into the war effort by raising funds, sending parcels to servicemen, making flags and posters and helping out at the WRVS canteen.

"Through Helena's diaries we see events clearly, as they were seen at the time," said Margaret. "No-one knew how long the war would last, what was going to happen and how it would end."

Helena Invicta Hall moved to Blue Gates, opposite Lindfield Common, in 1920 and soon became a stalwart of the village. She was a member of the Women's



Institute, the Bonfire Society, the Horticultural Society and the Lindfield Players, and was also the village librarian.

When war broke out Helena volunteered as an Air Raid Warden, a role which not only suited her efficient and vigilant nature, but also provided many stories for her journal!

Helena's diaries are a mix of personal experiences, accounts from family, friends and neighbours, and written reports from local and national newspapers and radio broadcasts. She has added newspapers cuttings, letters, stamps, greetings cards and cartoons and snippets that amused her. "I think everyone knew that Miss Hall was keeping a diary," said Linda.

The weather is mentioned almost daily. "This may be because there were no weather reports as they could have aided enemy invasion plans, or simply, as today, the weather was a common topic of conversation!"

Helena took her ARP role very seriously and there are many mentions of visits to houses where lights were showing during blackouts. She also recalls how she wrote to a headmaster to reprimand him for failing to fly the Union flag!

Helena writes of air raids, sirens and search lights:
...the sirens went again and neither of us heard it. The sirens are not nearly loud enough, many complaints are justifiably made about them. I dressed and went out and thoroughly enjoyed the sights I saw during this long raid, which was not over until 4am. The searchlights were a marvel in themselves, I counted 19 congregated and they kept politely bowing to one another and they followed the enemy planes far above them. It must have been disconcerting to have lights dazzling you way like that ...the light over the pond was truly beautiful, reflections clear, the lights themselves looking like glorified fireworks only keeping quite still and sending down little bright sparks.

She keeps a close eye on fellow villagers:
Ellmer's the fish shop in the High Street was closed on Tuesday. The fat man who presided there has German tendencies. He has not been interned yet but is being watched.....

And the soldiers stationed in the village:
The Common is strewn with soldiers lying down enjoying the warmth and sunshine, all seem very tired When I walked up the village this evening I saw soldiers taking in their kit to the Hall so evidently it has been commandeered.

"As we read and transcribed the diaries we felt we really got to know Helena," said Linda. "She was clearly a forceful character and everything is written with a stiff upper lip. I think we would have respected her."

Linda and Margaret can only guess why Helena didn't try to get her diaries published.

"They do seem to have been written with a purpose in mind but maybe when the war ended people wanted to stop talking about it," said Margaret. "After the war she went on to write her book Lindfield Past and Present about the history of the village.

"But we think she would have been pleased to see her journal finally published. We feel we have done justice to both Miss Hall and her journal."

The book has been published by Pen and Sword Books Limited following a recommendation from Dr Peter Liddell, an expert from the Second World War Experience Centre in Leeds. "He gave us invaluable advice and suggested that we approach his publisher," said Linda. "We sent a paragraph in an email and were astonished when it was accepted straight away!"

Linda and Margaret will be launching the book with a talk and slide show at the King Edward Hall on Wednesday 3rd December at 7.45pm (doors open at 7.15pm). Tickets are available from SWALK and Tufnells Home.



CHASE THE PUD

HAYWARDS HEATH

A community event organised by local volunteers
working in association with Ardingly College

Join other Santas and run through the
beautiful woods and fields of

Ardingly College

on **Sunday 7 December**

at **9:45am** (registration from 9:00am)

and help raise vital funds
for life-saving research.

Pre-event registration fee is £10
for adults (which includes a free
Santa suit). Free for children
under 12. On the day event
registration fee £15 for adults.

There are 3 events:

**Full Pud (10km) and Half Pud (5km)
at 9.45am and a walk at 10.15am**

For more information to register,
go to bhf.org.uk/chasethepud
call 0300 330 3322
or email frsupport@bhf.org.uk

**FIGHT
FOR EVERY
HEARTBEAT**
bhf.org.uk



©British Heart Foundation 2014, a registered charity in England & Wales (225971) and Scotland (SC039426)

'Success is a science; if you have the conditions, you will get the result'

Oscar Wilde

2
FREE*

Personal Training
sessions
(worth £110)



* when you buy 3 months Group Training up front

Phoenix Group Training

With our Group Training Programme you can train like an athlete in our uncrowded, private facility. We're all different, which is why we need to train differently. Follow your own personal training plan and you can choose whether you join us 2, 3 or 4 times per week from just £60 per month after your initial assessment.

Visit phoenixhh.uk/LL to find out how we'll help you achieve your results



"I lost 11kg's of fat in 16 weeks and I've never felt better. Thanks Phoenix!" – Elaine



Phoenix
Performance Centre

01444 810606
phoenixhh.uk

(above CO-OP) South Road, Haywards Heath



WORLD COFFEES
FRESHLY ROASTED TO ORDER

Choice of 19 single origin coffees and blends

Xmas Special – JAMAICA BLUE MOUNTAIN

Probably the best coffee in the world, & definitely the perfect end to Xmas lunch

Xmas Coffee Hamper

Available to pre-order and collect or to be sent anywhere in the UK

Coffee vouchers
Give the gift of choice



The Old Forge, Denmans Lane, Lindfield, West Sussex, RH16 2LB
T: 01444 482140 · E: enquiries@worldcoffees.co.uk
www.worldcoffees.co.uk

Roastery Opening Hours: Monday, Wednesday & Thursday 9 am till 1 pm



FESTIVE FEAST

START THE CHRISTMAS SEASON WITH A TRIP ON A STEAM TRAIN THROUGH THE SUSSEX COUNTRYSIDE AND THEN ENJOY A DELICIOUS CHRISTMAS MEAL IN THE RESTAURANT AT SHEFFIELD PARK STATION.

1ST/8TH/15TH DECEMBER

£18.50PP THIRD CLASS-OR TREAT YOURSELF TO A TRIP IN THE FIRST CLASS CARRIAGES
£21.50PP

BOOKING ESSENTIAL

CALL 01825 720800 OR SEE WEBSITE FOR MORE DETAILS www.bluebell-railway.com



The Barefoot Players
present

Winter Fairy Tales

an evening of tales and music from a variety of traditions
with delicious home-baked cakes

Saturday 13 December 2014
4.30pm and 7.00pm

King Edward Hall, Lindfield

Tickets £5

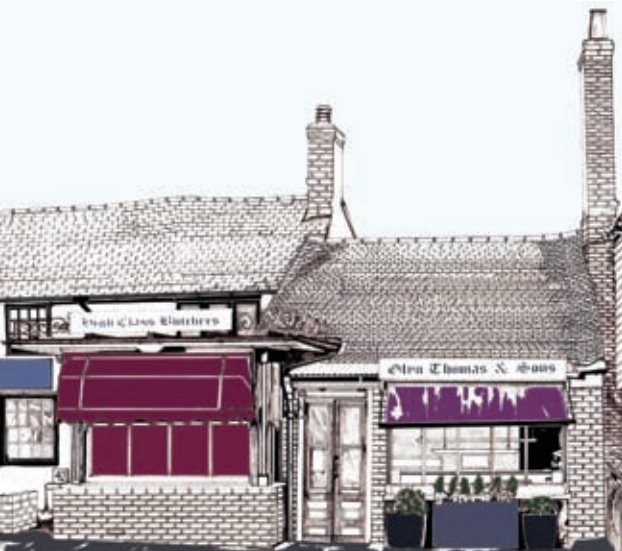
available at
www.barefootplayers.co.uk

Capsule marked with a plaque



Ian Masters of Masters & Son unveiled a donated plaque above a buried time capsule at Lindfield Primary School (LPS) last month. The capsule was the idea of last year's School Council and was created to coincide with the extension of the building. Included in it are a number of items from school life today, including a set of uniform, timetable, an edition of the school newspaper, certificates and photos of pupils from the year.

Ian has a personal long-standing history with LPS from when his children attended, as well as his great, great, great grandfather being listed as one of the original committee members who founded the school.



Art commission

Local artist Paul Milton was recently commissioned to produce a number of pieces depicting the local sights here in Lindfield. A resident approached Paul a few months ago in order to send the art as gifts to relatives in Canada. Paul commented: "It's nice to think a little bit of Lindfield will be in Canada for the future."

Looking for an alternative to kennels?



Pepper on his Wagging Tails holiday with her friend Sam.

Give your dog a Wagging Tails holiday!

Your dog spends his holiday in the carefully selected family home of our highly experienced, vetted, licensed and insured carers. Get to see where your dog will be staying and meet the carer before the holiday for a "sniffing out meeting". Only one family's dog(s) holiday with our carers at any given time.

For more information on our home boarding service contact:

Wagging Tails

Lena Touqan

Tel: 01342 810 286 / 07940 757 888
Email: rh@waggingtailsuk.co.uk
www.waggingtailsuk.co.uk/rh



A franchise owned and operated under license by Lena Touqan



Comfort food

SIMPLY GOOD FOOD

Pork with Mushrooms, Apples & Cider Serves 4

Nothing goes better with pork than mushrooms, apples and cider in a creamy sauce. Serve with potatoes, rice or just some crusty bread and a crisp green vegetable such as finely shredded green cabbage lightly sautéed in a tiny knob of butter until just softened. I also like to serve it with the Lemon and Walnut Wheat Pilaff.

Cook, covered, on the hob over a very low heat for about 15 min. Or, using an ovenproof sauté pan or transferring everything to a casserole, cook in the oven at 160° for about 20 mins. Can be cooked ahead and gently reheated in the oven or the microwave (on MED).

Thinly slice 450g pork fillet diagonally across the grain. Using a large ovenproof pan (see note above)

quickly fry in a dash of oil until golden brown on both sides. Remove from the pan and set aside. Cut 450g chestnut mushrooms either in half or into thick slices. Heat a small knob of butter in the pan (no need to wash it first) and add the mushrooms. Cook for a few minutes, stirring, until golden brown. Using a slotted spoon, add to the meat. Add a thinly sliced onion to the hot pan and cook for a few minutes until soft and golden brown. Stir in a large thinly sliced, peeled and cored Bramley apple and 250ml dry cider. Bring to the boil, then reduce the heat and simmer until reduced by half. Stir in 200ml crème fraiche or whipping cream, the meat and the mushrooms. Continue cooking as note above. Season to taste before serving.




Christmas at Oathall Farm Shop

We will be selling a selection of Christmas fare from free range barn-reared turkeys, gammon, Christmas sausages and ribs of beef.

In Christmas week we will be open on Tuesday 23rd December between 1pm and 5pm and on Christmas Eve between 9am and 1pm. We are open as usual on Friday 9th January. Tuesday 16 December is our last date for Christmas orders.

Tuesdays and Fridays 1pm-5pm
Saturdays 9am-2pm.



Email: farmshop@oathall.org
Phone: 01444 451823

Appledore Gardens,
Haywards Heath,
West Sussex
RH16 2AQ.

By Caroline Young

As I write this we are enjoying very heavy rain so I imagine our Indian summer weather is at an end. Welcome back comforting casseroles, soups and our homegrown winter vegetables. I'm sure you have your own favourite Christmas recipes you enjoy every year, so here are some warming dishes for the other dull days of December.

Lemon & Walnut Wheat Pilaf

Serves 4-6

Serve hot with meat or poultry or, at room temperature, with salad vegetables and a mature cheese.

Using a large saucepan, gently cook 1 large finely chopped onion and a crushed garlic clove in 2tbs rapeseed oil until soft and golden brown. Add 200g bulgur wheat stirring to coat it with the oil. Finely chop 2 large carrots and add to the pan with 600ml hot vegetable stock, 2tsp grated fresh root ginger and the finely grated zest of 1 unwaxed lemon. Cover and cook over low heat for 15-20 min or until the grain has absorbed the liquid. Add seasoning and lemon juice to taste and serve topped with lots of toasted chopped walnuts.

Brussels Sprouts with Bacon & Onions

Serves 4-6

Cook 4 slices streaky bacon in a large frypan until crisp. Remove with a fork and crumble with your fingers. Set aside. Add a large thinly sliced onion to the pan drippings and gently cook until soft and golden brown. Add 150ml

water and 1tsp Dijon mustard and bring just to the boil, scraping up the browned bits in the pan. Add 450g prepared and thinly sliced Brussels sprouts and cook, stirring frequently, for about 5 min or until just tender but still slightly crisp. Stir in 1tbs cider vinegar, season and serve topped with the crumbled bacon.

Gnocchi with Tomatoes & Watercress

Serves 3-4

Using a large frypan cook 50g chopped pancetta (diced bacon) until it begins to brown. Add 2-3 crushed garlic cloves (the smoked variety would be extra delicious) and 250g chopped tomatoes. Cook, stirring, until the tomatoes are soft. Season and sprinkle with 2tsp red wine vinegar.

Cook 450g fresh or shelf-stable gnocchi to package directions. Roughly chop 100-150g watercress discarding any tough stems. Tip into a colander. When the gnocchi is cooked, drain in the colander over the watercress, wilting it slightly. Add the gnocchi and watercress to the sauce, gently combine and serve immediately topped with coarsely grated hard cheese.



BIG LIFE ORGANICS
The wholefood store
with a whole lot more

10% off
on production of this advert

BIG LIFE ORGANICS
112 South Road
Haywards Heath
West Sussex RH16 4LL

01444 628667
shop@biglifeorganics.co.uk
www.biglifeorganics.co.uk

f
t



Innovation
that excites

FUEL COSTS FROM JUST 2P A MILE THE ELECTRIC SIDE OF DRIVING



The 100% electric Nissan LEAF | Recommended by 95% of owners* | From £169 a month

PERSONAL CONTRACT PURCHASE REPRESENTATIVE EXAMPLE

MODEL	25 MONTHLY PAYMENTS	ON THE ROAD CASH PRICE	CUSTOMER DEPOSIT	NISSAN DEPOSIT CONTRIBUTION	TOTAL AMOUNT OF CREDIT	DURATION OF AGREEMENT	OPTIONAL FINAL PAYMENT	TOTAL AMOUNT PAYABLE	RATE OF INTEREST P.A. (FIXED)	0% APR REPRESENTATIVE
LEAF VISIA	£169	£21,490	£3,844.08	£2,200	£15,445	25 MONTHS	£11,390	£21,490	0%	

BARNARD & BROUGH

Green Road, West Sussex RH17 7QB

0844 858 8175 | barnardandbrough-nissan.co.uk

Opening hours 8-6 Monday to Friday, 8.30-5 Saturday and 10-4 Sunday

Offers valid until 5 January 2015 at participating dealers only. NISSAN DEPOSIT CONTRIBUTION OF £2,200.00 IS ONLY AVAILABLE WHEN TAKEN ON 0% APR PCP NISSAN FINANCE PRODUCT. Figures based on annual mileage of 7500 miles pa, excess mileage 10p per mile and is not available in conjunction with any schemes or offers. Finance provided by RCI Financial Services Limited, PO Box 149, Watford WD17 1FJ. Subject to status. Guarantees and indemnities may be required. You must be at least 18 and a UK resident (excluding the Isle of Man and Channel Islands). Terms and conditions apply, please visit www.nissan-offers.co.uk or your local dealer for full details. All prices include first registration fee and 12 months' road fund licence. Information correct at time of going to print. Model shots shown are for illustration purposes only and are subject to availability. LEAF Visia shown has metallic paint at £525 inc. VAT. Our dealership introduce customers to a limited number of finance providers including RCI Financial Services Ltd. Finance providers pay us for introducing you to them. CO2 while driving 0. MPG N/A. From 2p per mile is based on (i) overnight electricity costs (British Gas Standard Tariff unit rates for a customer paying by direct debit as at 1 May 2014, assuming seven hours of charging at the night rate and one hour on the day rate), and (ii) a range of up to 124 miles per full charge (assuming 95% efficiency). Actual consumption and range may vary due to driving style, road condition, air conditioning and other factors outside our control. Daily standing charge of 26p also applies. LEAF 24-hour test drive is subject to availability and eligibility criteria, and from participating Nissan dealers only. Restrictions and limitations apply, see nissan.co.uk/leaf24. *Source: December 2013 Nissan Europe Customer Satisfaction survey of 498 LEAF buyers across UK, Portugal, Spain, Sweden, Denmark, Switzerland, Norway and France, who had owned their car for approximately one month. Model shown is LEAF Visia, 80 kW AC electric motor. Subject to status. Further charges may be made subject to mileage and condition if you elect to return the vehicle at the end of the agreement. Nissan Motor (GB) Ltd, The Rivers Office Park, Denham Way, Rickmansworth, Hertfordshire WD3 9YS.

Wise men seek Him still

If ever there was a time when we needed the 'Wisdom of Solomon' it's at Christmas time. Who shall we send a card to? Who shall we buy a gift for? How much should we spend? What shall we have for dinner, and who, if anyone, shall we invite over for Christmas? Get it wrong and, Oh Boy!

In the Christmas story Matthew tells us of Magi (Wise men) who travelled to Jerusalem from the east (Persia or Arabia) and these men came to worship Jesus, the new born King of the Jews, and to bring him treasures of gold, incense and myrrh.

Their journey, travelling many hundreds of miles, must have taken some considerable time but they resolutely came to Jerusalem with one purpose and that was to worship Jesus, God's gift of love to the world. A love that was later demonstrated when Jesus willingly took the punishment our sinfulness deserves by dying on a cross in order to bring us forgiveness and peace with God.

Well, no doubt planning Christmas will take time and, of course, wisdom but why not, like the 'wise men', resolve to make a journey to church this Christmas and bring to Jesus the greatest gift you can ever give Him, and that's yourself.

The really wise are those who seek Jesus today.

Mervyn Weeks, Pastor, Lindfield Evangelical Free Church

Sue Waller, Secretary, United Reformed Church

James Clarke, Vicar, All Saints, Lindfield

Stuart Silk, Associate Vicar, All Saints, Lindfield

Lisa Barnett, Priest in Charge, St Augustine's



Christmas services

All Saints Church

www.allsaintslindfield.org (01444 482405)



- | | | |
|--------------------------------|---------|---|
| Tuesday 16th December | 10am | Carols and Cakes
(Tiger@Ten Carol Service for over 55s) |
| Wednesday 17th December | 9.30am | Daytime Tiger Carol Service
(for parents and pre-school children) |
| Sunday 21st December | 8am | Holy Communion
(Book of Common Prayer) |
| | 10.30am | 'When heaven and nature sing'
(A service for all the family – bring your friends!) |
| | 4.30pm | A service of Lessons and Carols (1) |
| | 6.30pm | A service of Lessons and Carols (2) |
| Wednesday 24th December | 3pm | Christingle Service (1) |
| | 4.15pm | Christingle Service (2) |
| | 5.30pm | Christingle Service (3) |
| | 11.15pm | Midnight Communion |
| Thursday 25th December | 8am | Holy Communion
(Book of Common Prayer) |
| | 9.30am | All Age Christmas Celebration |
| | 11am | Christmas Communion |
| Sunday 28th December | 10.30am | Holy Communion
(combined service) |
| | 6.30pm | Cornerstone (Three Churches Together) |



Evangelical Free Church

www.lefc.co.uk (01444 413882)

- Friday 19th December 9.30am * Crib Service (Tots groups)
- Sunday 21st December 10.30am Morning Service
4.30pm Carols by candlelight
- Thursday 25th December 10.30am Family Celebration
- Sunday 28th December 10.30am Morning Service
6.30pm Cornerstone (Combined Service at All Saints)
- Wednesday 31st December 11.30pm Midnight Service



Christmas services

United Reformed Church

www.lindfieldurc.org.uk (01444 455047)

Thursday 18th December 7.30pm Christmas Concert

Sunday 21st December 10.30am Family Service

6.30pm Carol service

Wednesday 24th December 4pm Crib Service

Thursday 25th December 10am Family Service

Sunday 28th December 10.30am Family Service

6.30pm Cornerstone (Combined Service at All Saints)



St Augustine's, Scaynes Hill

More details from:

Revd Lisa Barnett: 01444 831827

or Jenny Walker: 01444 831696

Sunday 7th December 5pm Carol singing and turning on the Christmas tree lights, followed by mulled wine & mince pies

Sunday 14th December 4pm Christingle service for all the family, followed by a children's picnic tea

Sunday 21st December 6pm Carols by candlelight, followed by mulled wine and mince pies

Wednesday 24th December 4pm Children's Crib service
* 11.15pm Midnight Communion

Thursday 25th December 10am Christmas Communion, for all the family

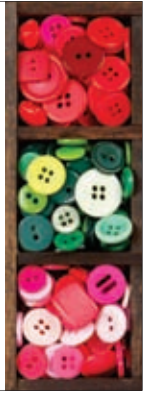




SEWING SERVICES

Email Jane for a quote or pricelist
janes-sewing@hotmail.com or call 07940 110551
Meadow Lane, Lindfield, RH16 2RJ

alterations
•
repairs
•
dress and
curtain making
•
collection and
delivery service
available



The Studio is a hub of activity all year round with regular children's classes, adult workshops and holiday clubs.

Ladies' Craft Afternoons or Evening Parties

Special Family Art Sessions with refreshments

Birthday Art Parties

Art Session Gifts Vouchers for a creative present

Join the mailing list today!



To register or for further information call Leesa now on 07738288730

art@lindfieldartstudio.co.uk

www.lindfieldartstudio.co.uk/whats-new

TALK FOR CHANGE
SUSSEX PSYCHOLOGICAL THERAPIES



THERAPY WITH
ANIA AT ABBOTT'S,
LINDFIELD

WWW.TALKFORCHANGE.CO.UK

PROBLEMS TOO BIG TO SOLVE
ALONE? TALK TO ANIA!

- FRIENDLY AND CONFIDENTIAL
- HOPE-INSPIRING APPROACH
- 10 YEARS NHS EXPERIENCE
- EVIDENCE-BASED THERAPIES (EMDR, CBT, IPT & COUNSELLING)



CALL ANIA ON: 01444 617 226



Beacon View Wellbeing Centre

HOME FRONT

By Jacqui Smith, interior designer

About a year ago we were approached by St Peter and St James Hospice to see if we would be interested in getting involved in the design of their soon to be refurbished and extended wellbeing centre. I know many people who have taken great comfort from the care and support which the hospice has provided them and loved ones so was genuinely thrilled to be asked. We met with Head of Operations Caroline Harding who talked us through the project and what the hospice were hoping to achieve. Caroline explained to us that they were keen to create a homely, inviting and also uplifting space for patients as well as visiting relatives. It needed to be a place where people could take an art class, enjoy a coffee and panini with a fellow patient or a loved one or surf the internet. They also had plans for some new therapy rooms and with a variety of activities taking place in these areas it became clear that the design we came up with would need to be as flexible as possible.

Any interior design project starts with considering the function of the space and the needs and wants of the users. In this case, as you can imagine, it was crucial to engage with patients - both current and also patients not regularly using the facilities but those who would be once the wellbeing centre was completed. It was also important to consult the therapists and carers. The therapists would of course have a clear idea of what they wanted from the space and the carers would understand the priorities for their patients and crucially how the design could support them in their own jobs. This is such an important aspect of design in all healthcare schemes. Yes, you design for the end user but the needs and wants of the carers play a key role; well thought through design enables them to carry out the job efficiently and spend more time with their patients. The other group we needed to consult was, of course, the management team. Listening and understanding forms the bedrock

of our work and, with a multi-headed client brief such as this one, it was important that we listened and took as much of the collective ideas into the scheme without diluting the integrity of the design. In the quest to please everyone you of course risk pleasing nobody! (I am happy to say that we successfully navigated that one.) There were tweaks along the way but the end result has been extremely well received across the board. We specified some striking lights for the main cafe and activities area, which I think everyone has commented on. They, together with several coats of Dulux Rum Caramel 5, have transformed a dark and oppressive pine clad ceiling into a light and airy space which really lifts the room. Patients now have a built-in dedicated display area for their art and plenty of storage for materials. The IT area is open and accessible and there for use by patients and visitors. A selection of different chair types affords patients a choice of comfort, be it rise-recliner or tub chair. It was important for the servery to feel more like a cafe than a canteen, so we specified Dulux Velvet Touch 2 for the back wall, a gorgeous rich teal which provides a fabulous contrast to the canteen equipment and gives the space a more coffee shop aesthetic. Finishing touches like the black boards complete the look. Full credit to our assistant designer, Katy May, who has project managed the installation of the scheme, working very closely with the client, the architect and the contractor to ensure that everyone's vision is translated perfectly. Since opening in September we have visited the wellbeing centre a couple of times and it's been wonderful to see people using it, feel the buzz in the room and hear how uplifting people find the new day care centre. We all feel very blessed to have been part of this project.

www.homesmiths.co.uk 01444 440880

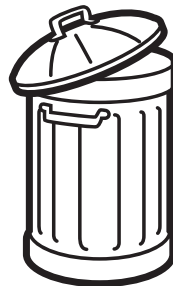
Changes to Christmas and New Year rubbish and recycling collections 2014/2015

Due collection date

Monday 22nd December
Tuesday 23rd December
Wednesday 24th December
Thursday 25th December
Friday 26th December
Monday 29th December
Tuesday 30th December
Wednesday 31st December
Thursday 1st January 2015
Friday 2nd January 2015

New collection date

Saturday 20th December
Monday 22nd December
Tuesday 23rd December
Weds 24th December
Saturday 27th December
Monday 29th December
Tuesday 30th December
Weds 31st December
Friday 2nd January 2015
Saturday 3rd January 2015



Collections go back to normal from Monday 5th January 2015.

Garden Waste Collections

There are no garden waste collections 22nd December 2014 and 4th January 2015 (inclusive).

Collection calendars are available online or by contacting MSDC. Tel: 01444 477440
or email: wastematters@midssussex.gov.uk Web: www.midssussex.gov.uk/recycling

Calling all GREAT businesses

The Business is GREAT campaign and BT Business have teamed up to launch the GREAT Faces of British Business competition to find the most innovative and exciting small businesses across the country. The competition launched last month and Lindfield businesses are invited to take part.

Entrants will be in with a chance of being crowned regional champion, with the winners shortlisted for the national competition. The overall 'grand prix' winner will win an exclusive package worth over £30,000, including a bespoke creative advertising campaign, along with an iPad Air and unlimited BT Wi-fi for 12 months.

There are three categories and business can enter one or all depending on which are relevant to their business:

- Best exporter – a small business that has successfully entered new markets
- Most innovative small business – a small businesses that has turned an innovative idea into a reality
- Best growth story – a small business that has an inspirational growth story

To enter, all eligible businesses must state why they deserve to be named as the GREATest small business in their community. For terms and conditions and the entry form please visit <http://www.greatbusiness.gov.uk/competition>

Vacancy at garage

Lindfield Motors, on Lewes Road, is looking for an MOT Assistant to work 8am to 1pm Wednesdays to Fridays. The job entails assisting the MOT testers with the tests, washing cars, collecting and delivering customers' cars and general housekeeping jobs. Owner Nicola Yule commented: "It is quite physical work but pretty varied. We need someone who is confident driving cars but they don't have to have technical knowledge."

If you feel you, or someone you know, would like the opportunity to join a thriving local business contact phone Nicola or Alan on 01444 482988 or pop in.

Poppy Appeal thanks

The Lindfield Branch of The Royal British Legion would like to thank everyone for their very generous donations to its 90th Annual Poppy Appeal.

"We are so grateful to all our loyal collectors who go out in all weathers. We would also like to thank all the Lindfield Churches, shops, pubs, schools and Medical Centre for their support," Jane Harding said.

"Our thanks go to Canon James Clarke and Pastor Mervyn Weeks for conducting our Remembrance Service at All Saints. This was so well attended there was standing room only at the back of the church!"

The Last Post and Reveille were played by Megan Healy and the procession was led by resident piper Peter Candy.

Haywards Heath & District Probus Club 30th birthday

As the name suggests, Probus is a club for retired and semi-retired professional and business people, primarily to replace the fellowship lost when they retire and to make new friends, brought together in a relaxed environment over a regular lunch. The name is an amalgam of the words professional and business. Probus is also a Latin word meaning honest and virtuous. Probus is a worldwide organisation and there are some mixed Clubs and a few ladies Clubs.

The Club was formed by the Rotary Club of Haywards Heath & District in 1985 and it meets on the second Wednesday of every month at Lindfield Golf Club for lunch and usually a guest speaker. There are social events and trips throughout the year in which members' wives are involved. The ladies and partners are invited to the meetings in April, October and at Christmas.

The Probus Club of Haywards Heath & District is always pleased to accept new members and anyone wishing to investigate this social organisation should in the first instance contact the Honorary Secretary, Angus Robson on 01444 482580 or email a.g.robson@btinternet.com or via the website www.haywardsheath-probus.org.uk

Local City and Guilds Qualified Plumbers



- Emergency repairs
- Available 24hrs
- Fast response
- New bathrooms
- Central heating
- Reliable

Call Godfrey now on:
01444 454 969 or 07833 726 411

candgplumbers.co.uk

Checkatrade.com
Where reputation matters

Rated People.com

We CAN clean your oven!



oven

CLEANERS SUSSEX CO UK

we bring your oven back to new

We clean single/double ovens, ranges, Aga's, microwaves, hobs & extractors.

Non-caustic cleaning method means no dangerous chemicals in your home.

Fully insured and highly reputable.

Call Alex on 07768 256747
or visit www.ovencleanerssussex.co.uk

Time for School? Choose the best.

Choose Burgess Hill School for Girls.



Reception 2015

Your daughter is eligible to start school in **September 2015** if she is born between 1st September 2010 and 31st August 2011.

**No time to lose,
apply for our reception
class now.**

BURGESS HILL SCHOOL
for girls

Our Junior School is the 'right' choice

Warm, vibrant, buzzing with happy, enthusiastic and motivated young learners.

Call now for further details - 01444 241050



www.burgesshill-school.com



LEE'S LOCKS

NO CALL OUT CHARGE!

All locks fitted to insurance BS3621

Window Locks • Supplied & Fitted Fully Guaranteed • O.A.P. Discounts Insurance Work • UPVC Specialist Digital Locks • Break ins Garage Door • UPVC/Patio Police Checked • No VAT!!!



**LOCKED OUT? DOOR JAMMED?
LOST KEYS? NEED EXTRA SECURITY?**

Store this number in your phone NOW! You may need it

Tel: 01444 484 119

Mob: 07921 068564

Email: lee@lees-locks.com

FREE PHONE 0800 44 88 147



Checkatrade
Always Before you use them



Records Wanted

Also CDs and memorabilia.
Any size collection.
Best price paid in cash.

Call Gregg on
07890 239 306

or email

megreggdale@gmail.com

SUSSEX WEALTH MANAGEMENT LIMITED

WEALTH MANAGEMENT CONSULTANTS



A wealth of expertise on your doorstep

We provide an experienced wealth management service and offer specialist advice in a wide range of areas including:

- Investment planning
- Retirement planning
- Inheritance Tax planning

For further details contact Michele or Ross on:

Tel: 01444 458197

Michele Mob: 07984 448526

Ross Mob: 07985 911364

Email: sussexwm@sjpp.co.uk

Website: www.sussexwealthmanagement.com



DEAN FERGUSON

YOUR LOCAL

ELECTRICIAN

(VAT FREE LABOUR)

PART 'P' REGISTERED

OVER 20 YEARS EXPERIENCE

ALL DOMESTIC ELECTRICAL WORK UNDERTAKEN

PERIODIC INSPECTION REPORTS

FREE ESTIMATES GIVEN

NO JOB TOO SMALL

Tel: 07754 000147

Email: deanfergusonelectrician@hotmail.co.uk

Whittaker

PAVING

Whittaker Paving is a local family-run landscaping business, operating in the Haywards Heath area and serving customers throughout Sussex.

Since 1979 we have specialised in Driveways, Patios, Brickwork and Landscaping. We pride ourselves with our excellent reputation in meeting and often exceeding our customer's expectations.

For more information or to arrange a **FREE no obligation quote** please call us today.

Tel: 01444 450300

Mob: 07729 037660

DRIVEWAYS



PATIOS



LANDSCAPING



email: info@whittakerpaving.co.uk
www.whittakerpaving.co.uk

“PRB accountants,
let us do the
thinking.”



PRB accountants
the accountants you can count on

Microsoft
CERTIFIED
IT Professional

Network+
CERTIFIED

Tom Seymour BSc

IT SUPPORT

Providing IT support for small businesses and Home users, with over 10 years experience in IT.

- Purchasing Advice, Installation and Disposal
- Anti-Virus and Security
- Automatic Maintenance
- Remote support
- Training in your own Home
- Online Booking



01444 473606 - 07843 116783

Help@TomSeymour.co.uk

www.TomSeymour.co.uk/

Checkprofessional.com
Where reputation matters

Services include:

- Accounts preparation
- Outsourced bookkeeping
- VAT compliance
- Payroll bureau
- Company secretarial
- Audit
- Corporate tax compliance
- Corporate tax planning
- Personal tax compliance
- Personal tax planning

For further information or to arrange an appointment please call **01444 458252**

WEB
www.prbmp.com

TEL
01444 458252

Kingfisher House, Hurstwood Grange, Hurstwood Lane
Haywards Heath, West Sussex RH17 7QX



GIELGUD
ACADEMY
OF PERFORMING ARTS



CALL 01444 451977



www.gielgudacademy.co.uk





'Wife after Death'

By David Tingley

For me there's something very special about local theatre. I have, in the past, been involved in various guises but on this evening I was happy to be sitting in the (not insignificant) audience for Lindfield Dramatic Club's autumn production.

Rex Cooper, long-standing member of the club, directed the play 'Wife after Death' by Eric Chappell. Eric was best known for authoring the hugely popular 70s sitcom *Rising Damp*, and this play definitely had some of that wry wit about it.

The story's premise is that a collection of so-called friends are gathered for one of their number's funeral. However, it turns out that there is more than one

surprise in store for the group as they learn more about themselves and their companion in his passing.

Tim Bishop did a sterling job holding our attention as we learned more about his character Harvey's close friendship with the late Dave Thursby. It was touching to learn of his dependence on Dave, but he also (as his comedy writer) had a number of excellently delivered one-liners to share with the audience.

The rest of the small cast was comprised of Sarah Baldock, Jenny Slack (who I recognised from *Field & Forrest*), Luke Belton, Alex Mowforth and Sally Ross-Clark, who all did well too.

The production brought both comedy and some dramatic plot twists and I, for one, enjoyed it very much.



AJ Mullen

**Bricklayer,
General Builder,
Extensions & Patios**

Tel: 01444 414657 Mobile: 07941 308966 www.AJMullenbuilder.co.uk
Email: Mullenb04@aol.com 27 Hickmans Lane, Lindfield, West Sussex, RH16 2BN

DRAYTON Plumbing & Heating Ltd

Call Vic Drayton on 01444 458558 or 07703 255305



- Free estimates & advice
- Fully qualified & experienced engineers
- Energy conservation advice
- All work guaranteed & liability insured.
- Local services throughout Mid Sussex

draytonplumbing@btconnect.com www.draytonplumbing.co.uk



Natural Gas | Liquid Gas | Oil & Solid Fuel | Alternative energy systems | Service | Maintenance | Full installations

Snowflake Appeal

The Snowflake Appeal is fronted by TV presenter Kirstie Allsopp.

Local charity Home-Start CHAMS is launching its first 'Snowflake Appeal' to raise funds for its work supporting vulnerable local children and families.

"Many young children face tragedy and hardship," said Liz Roe, Manager at Home-Start CHAMS. "When families struggle to cope with illness, disability, bereavement, poor housing, mental ill health, or many of these problems at once, Home-Start supports them until they can stand on their own two feet again."

Last year the charity supported 327 children in 146 families. The number of families referred for help rose by almost 20% in the last year.

To be able to offer the vital support families need and make sure they can reach even more vulnerable local children in 2015, Home-Start CHAMS is asking local people to get involved in the Snowflake Appeal, which runs until 31st January.

"We are asking people to do something they love to help raise funds," says Jacquie Thomas, Fundraising and Marketing Manager. "Whether you make snowflake decorations to sell, get sponsored to run to the North Pole (on a treadmill at your gym!), or get your school involved in a Snowflake bake sale – there is a way to raise funds to suit everyone."

Free fundraising ideas packs and details of other ways you can support the Snowflake Appeal are available from www.homestartchams.org.uk/snowflake or by calling them on 01293 416327.



©redemption



01444 414 999
AV CARS
01444 892288

Your local private hire taxi company.

Prices
24/7

Gatwick **£20** Heathrow **£60**
Stansted **£90** Southampton **£100**

Please book in advance to avoid disappointment!
All local work undertaken and all destinations quoted for

Call Bernie Mick or Dan

01444 414 999



Lindfield Rural Parish Council Newsletter

December 2014

Millennium Village Centre, Lewes Road, Scaynes Hill, West Sussex RH17 7PG
Tel: 01444 831499 email: lindfieldrural.parishcouncil@virgin.net www.lindfieldrural-pc.org.uk

Are you ready for winter?

There's no way of telling what the weather might be like this winter but you can make sure that you are as prepared as possible for every eventuality.

West Sussex County Council will have new webpages on its website at www.westsussex.gov.uk/snow from mid to late November, where residents can find out more about how to cope in snow and ice conditions.

You can look up which roads the County Council is able to grit, read about how the County Council prepares in the event of bad weather and also find out about what you can do.

An updated version of Lindfield Rural Parish Council Winter Management Plan is available on our website at www.lindfieldrural-pc.org.uk. Salt/grit bins are filled annually by WSCC and are provided on the understanding that this is kept for use on public pavements. WSCC will not refill the bins and Haywards Heath Town Council will assist with the transfer of spare salt/grit to our bins. Residents are therefore requested to be economical with the supplies provided so stocks are not diminished. Recommended rate for spreading is 20 grams of salt/grit per square metre (a tablespoon full).

Grit bins maintained by Lindfield Rural Parish Council can be found in:

Westlands Road/Coombers Lane, Lindfield
William Allen Lane/Croxton Lane, Lindfield
Meadow Drive, Lindfield
The Platt, Lindfield
The Hollow/The Rise, Lindfield
Rustlings Close, Lindfield
Lewes Road (A272)/Orchard Close, Scaynes Hill
Hillcrest Lane, Scaynes Hill
Church Road, Scaynes Hill
Vicarage Lane, Scaynes Hill

There are some simple things we can all do to prepare for winter and the weather it might bring:

- Check on vulnerable or elderly family and neighbours – they may need your support in bad weather
- Don't use water to clear snow and ice, it will refreeze and become more dangerous
- Don't travel unless you have to and make sure your vehicle is ready for cold weather



by Jason Lainchbury

- Be prepared – keep a supply of provisions in case of bad weather
- Mobile phones and social media such as Facebook and Twitter are an excellent and easy way to keep in touch during severe weather events. Make sure you share your details with your neighbours
- Make sure you dress appropriately for the weather conditions, especially footwear

It doesn't hurt to think ahead and be well prepared. Don't forget, you can also follow @WSHighways on Twitter, or 'West Sussex Matters' on Facebook, to keep up to date and share information.

For further advice, you can also visit the website www.metoffice.gov.uk and search 'Get Ready for Winter'.

Your Parish Councillors:

John Dumbleton (Chair)
Ray Jones (Vice Chair)
Brian Bunt
Chris Hersey
Margaret Hersey
Keith Martin

Tel: 482633
Tel: 453868
Tel: 484661
Tel: 482270
Tel: 482270
Tel: 831686

Steve Minter
Andy Spooner
Christopher Snowling
Parish Clerk: Di Morgan
Assistant: Irene Nicholas

Tel: 831786
Tel: 831602
Tel: 482172
Tel: 831499
Tel: 831499

Lindfield Rural Parish Council Office is open to the Public on Tuesdays 12.30 to 13.30 and Thursdays 10.00 to 11.00

Asset of Community Value

During the Lindfield and Lindfield Rural Neighbourhood Plan consultation process of public exhibitions and discussions, it was obvious that a large proportion of the Scaynes Hill community regarded the Inn on the Green public house as an important asset to the village. The rapid turnover of the tenant landlords was disturbing to the community and fears were expressed that, at some point, the owners might decide to close the pub and sell it, perhaps to make way for housing.

Whilst there was a desire for additional housing within the village, especially to cater for younger families or the elderly wishing to downsize, the loss of the only village-centre pub, which has been in existence since 1751, was considered a 'step too far'.

Further investigation by the Parish Council has found that the Neighbourhood Plan process is not able to protect such a building from either change of use or destruction. However, the Localism Act 2011, which came into effect in Autumn 2012, does provide a means whereby a community may at least have the opportunity to control the future of such a building. Such protection is obtained by registering the building as an 'Asset of Community Value' with the local Planning Authority (Mid Sussex District Council, MSDC). Lindfield Rural Parish Council has now taken the necessary action to so register the Inn on the Green public house.

What does this registration mean?

Well, for the next 5 years, if the owner of the pub wishes to sell it, MSDC must be advised and no sale can proceed until the community have been given the opportunity to bid for the property. The community, via the Parish Council, have 6 weeks to register an interest in the purchase and then an overall total of 6 months to make a bid. Such a bid does not have to be accepted by the owner, who after the 6 month period may sell to the highest bidder, but there would be a 6 month delay in any sale if this process was followed.

More details of the whole process can be found at: <http://mycommunityrights.org.uk/community-right-to-bid/>

Neighbourhood Plan – Update

After considering the comments made by Mid Sussex District Council (MSDC) during their technical scrutiny of the draft submission copy of the Lindfield and Lindfield Rural Neighbourhood Plan (LLRNP), the LLRNP Steering Group are now in the process of finalising the various documents associated with the Plan, with a view to submitting them to each Parish Council for approval by the beginning of December. All being well, the formal submission of the Plan to Mid Sussex District Council will take place by mid-December 2014.

The submitted Plan will then be published by MSDC for a 6 week period of public consultation/comment and sent for examination by an independent examiner to ensure that it meets all the legal requirements before finally being put before the community in a referendum.

Lindfield Rural Parish
Councillors, Clerk,
RFO & Assistant
Clerk would like to
wish everyone A Very
Happy Christmas and
Prosperous New Year !

WHO ELSE WANTS TO LEAP INTO
2015 WITHOUT A CHRISTMAS BELLY?

LOCK DOWN
NEW YEAR
NEW BODY
DEADLINE 01/01/15

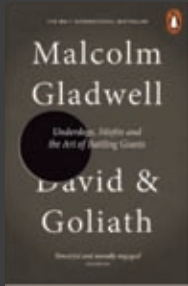
"So far I have lost over 4 Stone with Potential Personal Training. I have been attending for a year now and have achieved some really great results, I have much more energy and an overall better sense of well being. I'm still working towards my goals and would recommend it to anyone!"

NATALIE, MUM OF ONE, SUSSEX

**LOCK DOWN YOUR MEMBERSHIP
BEFORE THE 1ST OF JANUARY 2015
AND TRAIN IN JANUARY FOR FREE!**

**MIDSUSSEX
RESIDENTS
ARE ALREADY SEEING
UNBELIEVABLE
TRANSFORMATIONS**

www.PotentialPersonalTraining.com/LockDown



David and Goliath by Malcolm Gladwell

BOOK REVIEW

By Cavan Wood

Subtitled 'Underdogs, misfits and the art of battling giants', this is a book which suggests that those who look like they will be failures can by their tenacity defeat the odds. The tale of a dyslexic student who learnt to listen well and therefore developed the skills to become a major financier is inspiring. The way in which the Civil Rights movement deliberately played up to looking like being losers at Birmingham enabled them to deliver a major coup against the racist segregation systems of the U.S. South. Gladwell's extensive research into his thesis means that he gives a detailed set of reasons based on the history of warfare as to how David was always going to defeat the seemingly undefeatable Goliath. This book is above all about hope, about not giving into despair but believing in yourself and making sure that you put the work into overcome the disadvantages. We can see miracles!



Haywards Heath Golf Club

Huge Christmas Shop Sale

Saturday 13th December

Huge Savings On Everything Ready For Christmas
Balls | Bags | Lessons | Electric Trolleys | Clubs | Accessories
And Much More



High Beech Ln, Lindfield, Haywards Heath RH16 1SQ
01444 414866 | www.haywardsheathgolfclub.co.uk



**Lindfield
Motors**

Car servicing in Lindfield for all makes & models

- ✓ *Friendly welcome*
- ✓ *Top quality service*
- ✓ *Realistic prices*

- ✓ *All makes cared for*
- ✓ *Family owned for over 30 years*
- ✓ *MOT testing station*

Many people in the village have used us for years, why not join them?



Tel: 01444 482988 / 01444 483988

Lewes Road, Lindfield, RH16 2LG www.lindfield-motors.co.uk

**robert
simpson.
construction.
limited.**

- Extensions
- Renovations
- Loft Conversions
- Flat Conversions
- New Builds
- Conservatories

NIIC
DOMESTIC
INSTALLER

Telephone: 01444 243474 Mobile: 07886 388720

Email: info@robertsimpsonconstruction.co.uk

How to have a very Merry Christmas

by Ania Tylunas, psychotherapist

Christmas can be the most wonderful or the most dreaded time of the year. For every Noel-excited person out there, we have somebody who is apprehensive about being alone, falling out with family or not meeting expectations. So here are a few tips on how to avoid common Festive Season pitfalls.

Alone at Christmas? No problem!

The first thing to decide is whether you like spending time in your own company at this time of year. If so, seize the opportunity to make an effort **JUST FOR YOU**. Don't be afraid to indulge a little. Bubbly for breakfast and watching a box-set of your favourite programme while pausing for another helping of favourite food? Why not? This is your opportunity to do something you love, guilt-free.

If you would rather not be alone, check who else you know might be in the same situation. Or consider volunteering with one of the local charities organising festive events. This can be a hugely rewarding way of connecting with people, making a difference to others while making your Christmas meaningful in a new way.

Family affair

To pre-empt any potential conflict, have a family meeting and decide together how you are going to choose different aspects to take charge of. This way everybody feels included and involved. For the perfectionists out there- you may need to let go just a tad (a very good exercise indeed!).

While talking, check out how you are all feeling about various traditions you observe. Look at them with fresh eyes and don't be afraid to modify or let go of the ones that don't work any more. Be creative and form your own family traditions, something that might become unique just to you.

One for keeping up with the Joneses

Quite simply - **DO NOT**. We are saturated with adverts, contributing to unrealistic expectations of what sort of time we should be having. If in doubt, go for lasting value rather than momentary satisfaction. So even the best-chosen present will not give your child, parent, partner or friend as much as the gift of your time, love and attention.

And when all is said and done, it is this gift and its legacy that will stay with the people you care about forever, not just this Christmas.

Wishing you a very merry, loving and stress-free Christmas!

SIX PHYSIO
DON'T TREAT, CURE

LONDON'S FINEST FOR

PHYSIO...

SPORTS MASSAGE...

CLINICAL PILATES...

SPORTS INJURY

Treating over 10,000
new patients every year:
from assessment and
diagnosis to treatment and
rehabilitation, we have the
expertise to get you better
quicker faster.

AT

69b High St
LINDFIELD RH16

T. 01444 587587

E. lindfield@sixphysio.com

sixphysio.com





Lindfield welcomes Six Physio

Many residents will have noticed a new A-board that has appeared on the High Street in the last month or so.

Six Physio is a clinic being run by Lindfield resident and mother-of-two Alex Keogh. She moved to the village with her husband and boys back in 2011 when she was already working for Six Physio in London. She continued to work for the company but soon she began to ask her bosses if they would consider opening a clinic outside the city and eventually they agreed.

Six Physio is a group of ten physiotherapy clinics in London, employing nearly 70 physios. The firm was started in 1996 and has developed a special method of treating patients in two distinct strands; one manual and one rehab. These strands are typically treated by different physios, so that the patient receives double the expertise to their problems.

At the moment Alex is the only physio based in the Lindfield clinic but they are planning to expand to bring in an additional professional and include sports massage and pilates.

Alex sees patients with a range of issues from back pain, sports injury, post-surgery and pregnancy pain. Fellow resident Lee explained: "I was very impressed and she [Alex] was much better than my previous sports injury clinician at resolving my pain quickly."



Limited space remaining for Saturday Swimming Lessons at Ardingly College

SOME SPACES CURRENTLY AVAILABLE AT ALL ABILITIES

Popular children's swimming lessons held on Saturday mornings at Ardingly College. We welcome **toddlers, beginners, improvers and advanced** swimmers.

"I could not be happier with the excellent teaching my children have received. They progressed quickly and were swimming competently within a few terms."

Mrs Martin from Lindfield

ardinglytrainingcentre.co.uk
Fully qualified ASA teachers, CRB checked
EST. OVER 20 YRS AT ARDINGLY COLLEGE

For more information or to book call Jackie on 01825 791782



Time to shape the ball

TEERING OFF

By James Verrall, Head Golf Professional

Although your first goal is to hit the ball straight, having the skill to shape the ball in different directions can make a massive difference to your scores. There are many technical ways in which to shape the ball but try these simple tips to help start being in more control.

Shaping the ball can help you manoeuvre round objects, allow for sloping fairways and counter the wind. The two shapes we will look at are draws (moving the ball right to left) and fades (moving the ball left to right).

For both shots start with the club face pointing at the target. When hitting the draw you need to close your body to the target, this means the line of your feet and shoulders should be pointing to the right of target. A fade should be open to the target, so pointing left.

Set your hands further forward at address for the draw, placing them nearer to the left leg. This means for a fade you need to set the hands slightly back.

Now try swinging the club along the line of your feet. This means for a draw you will be swinging from the inside to out, and swinging outside to in for the fade. By doing this you create the high amount of sidespin needed to make the ball move.

For the draw try and feel that you roll your hands over more at impact. The opposite applies for the fade; you should feel that your hands do not cross over, if they do you will find yourself hitting the ball straight left.

You may notice that the fade goes slightly higher than your usual ball flight and the draw slightly lower. Use this knowledge when deciding if you want to shape the ball.

The more loft a club has the more difficult it will be to shape the ball. Don't try this with your wedges as the ball just won't move. Try out some 5 and 6 irons in practice and see what you can do.

A date for your diary - This month is our HUGE CHRISTMAS SALE on Saturday 13th December 10am-4pm. Everything will be on sale from all our products and even our lesson packages. Come down for a free mince pie and wine and we can chat over your golfing needs.

www.haywardsheathgolfclub.co.uk

Dave Bailey & Jim Avis

Local Lindfield Painters and Decorators

Available for large and small interior and exterior painting, wallpapering, design or improvements. A trustworthy professional service.

Please call for a quotation.



Dave
07847 177841

Jim
07861 794475

First advert HALF PRICE when you book three.

LindfieldLife

Call or email David or Matt
on 01444 884115
ads@lindfieldlife.co.uk
www.lindfieldlife.co.uk

Men's health: it's good to talk

If you're a guy who waits until something is seriously wrong before going to the doctor, you're not alone. The same can be said when it comes to raising awareness or money for cancer; the ladies are pipping guys to the post. So is there a solution? As consultant urologist Barnaby Chappell explains, we need to start talking about it first.

It's a common problem among men... a reluctance to talk about our health and more specifically, the prostate, penis or bladder. It's understandable really, problems 'down there' don't exactly make us feel our most masculine and talking about any type of health issue is never easy. But we need to face up to the problems.

As consultant urologist Barnaby Chappell points out, it's not the easiest thing to talk to your doctor about but early detection, along with raising awareness in Men's Health, is important. "I can understand why men shy away from issues with their urinary tract, erectile dysfunction or prostate but, like most illness or disease, we need to know more about these problems and although the more we search for them the more cases we find, it does help us get closer to helping people live longer with something like prostate cancer. With the PSA (Prostate Specific Antigen) test for example, we can identify who might be at risk of prostate cancer and monitor them accordingly. The earlier we spot symptoms, the greater the chance of finding curative solutions for them."

The consultant added that symptoms don't always mean bad news and that if men visit their doctor early on, they might save themselves a whole lot of worry. "Many of the signs that people associate with the prostate can be harmless. For example, problem urinating can be caused by the enlarging of the prostate gland but that does not necessarily mean cancer. Also, erectile dysfunction can actually have more to do with the heart and can precede heart conditions that may present themselves in a few year's time. So it's definitely worthwhile being examined to manage, prevent or treat that."

Despite more than 40,000 new cases of prostate cancer being diagnosed each year, the disease is still rarely talked about in public, compared with something like breast cancer.

As Mr Chappell puts it: "Women are way ahead of us in terms of raising awareness for their own cancers, such as breast or ovarian cancer. Men are lagging behind simply because of a reluctance to talk about these problems. It's an issue that is getting better. Now, for example, we have 'Movember' when men are encouraged to grow a moustache for a month to help highlight male cancers. But there's still a fair way to go. The biggest challenge is not only to get men to spot symptoms, or to see their GP but to talk about it openly. It's nothing to be ashamed of."

St Catherine's runners

Marathon and half marathon places are still available for runners raising money for St Catherine's Hospice. Members of Team St Catherine's Hospice are taking on the life-changing task of running a marathon in 2015 and you can join them.

The Brighton Half Marathon and Brighton Marathon are renowned tests of fitness and determination. While the ballots are now closed for both events, St Catherine's still has places available for runners who are willing to fundraise for the charity.

If you are accepted into the St Catherine's 2015 marathon or half marathon teams, the hospice promises a guaranteed place, fundraising support, top tips from seasoned runners, group training sessions and a dedicated cheering team to boost your spirits on the day.

Louise Brown, Events Fundraiser at St Catherine's Hospice says: "The funds raised by just one runner could pay for six Practical Care Team visits, allowing patients to be cared for in the comfort and familiar surroundings of their own home. This means that every member of the team is making a huge difference to people across our referral area of Sussex and Surrey.

"We're incredibly proud of our marathon runners and there is still a chance for you to join the team. Call 01293 447364 to talk to us about how to get one of our places in the Brighton full and half marathons."

Run with Fatboy Slim?



A local resident is looking for Mid Sussex runners to take part in the Brighton Marathon and Brighton Half Marathon next year.

The local charity, Young Epilepsy, works exclusively on behalf of the 112,000 children and young people aged 25 and under with epilepsy and associated conditions such as autism, learning and/or behavioural needs.

To further support the work the charity does in providing better futures for children, runners are needed to get involved and raise money by running in these events. James Gaydon commented: "We are delighted that Brighton lad Norman Cook (AKA Fatboy Slim) is captaining our Half Marathon team in February while the endurance athletes are taking on the full 26 miles of the Marathon in April. Which could you do?"

Contact James at Young Epilepsy on 01342 832243 or jgaydon@youngepilepsy.org.uk for details.

Pale Bitter wins Gold

Local company 360 Degree Brewing Company has recently won an industry award for one of its drinks. 'Pale #39' won a gold medal from the Society of Independent Brewers after being tasted by over 70 judges at the South East Festival in Tonbridge.

360 Degree has supplied The Stand Up for over eight months and has also recently started supplying The Witch, on Sunte Avenue. Many will have heard of the company at last summer's Village Day where they were serving customers from their stall, where they hope to be returning next year.

Thank you

Following the raffle organised by Kate Taylor at King Edward Hall last month, she is pleased to announce that – with the tremendous support from Lindfield residents – she has raised £285 for her London Marathon campaign for charity Action on Hearing Loss. The first prize winner of the Alexander House Utopia Spa Day was Anna Slack.

Wellness, don't take it for granted

Here at Lindfield Chiropractic Centre we believe that good structure is so important for the body to function properly, and improved function will lead to a better quality of life.

That's why, when people come to see us for varying concerns such as headaches, back pain, shoulder pain or leg pain they find with chiropractic care, health and wellbeing improves along with pain relief.

Dr Jennifer Layton is now joined by Dr Lindsey Wynne at the Lindfield Chiropractic Centre. This enables us to provide a better service as we are open six days a week.

Dr Jennifer Layton BSc GradDipChiro
Jenny first established her practice in Brisbane, Australia in 1988, after graduating from Sydney University.

Subsequently Jenny taught chiropractic at Macquarie University for five years.

She has worked with Australian Olympic Athletes and members of the Australian Rugby Team.

Dr Lindsey Wynne MSc Chiropractic graduated in the UK in 2004 as a chiropractor. She has a strong interest in canoeing and worked with the British Kayak Team. She has done further study in chiropractic care during pregnancy and early years.

Consult Dr Jennifer Layton or Dr Lindsey Wynne at:

83 High Street, Lindfield, Sussex RH16 2HN

www.lindfieldchiro.co.uk

Telephone 01444 484582

Together we have over 35 years experience in this field and our Centre is accepted by all major health insurers including BUPA and AXA PPP.

**SPB
Plumbing
&
Heating
Ltd**



**01444 483511
07798 636887**

74 High Street
Lindfield
spb.plumbing.heating@hotmail.co.uk

**Boiler & fire servicing and installation
Landlord's certificates
Bathroom design & installation
Solar panels
& all general plumbing**



**Over 20 years local service
Friendly & reliable
Fully qualified & insured**

What's on in December

AT KING EDWARD HALL

AND ELSEWHERE

- 1st **Autumn Club Meeting** – social afternoon with tea, chat and entertainment (Mrs Carole Sharp 01444 459305)
- 3rd **Talk and slide show** to launch the book "A Woman Living in the Shadow of the Second World War" 7:45pm (doors open at 7:15)pm. Tickets are available from SWALK and Tufnells Home
- 3rd **Hickory & Lindfield Montessori Nursery** – Nativity Play (Jackie Pickett 01444 473311)
- 4th **Country Market** – 10–11am (Sheila Hobbs 01444 483396)
- 11th **Country Market** – 10–11am (Sheila Hobbs 01444 483396)
- 13th **The Barefoot Players** – performing 'Winter Fairy Tales' - an evening of tales and music from a variety of traditions with delicious home-baked cakes. Performances at 4.30pm & 7pm. (Tickets from www.barefootplayers.co.uk or 07505 777613)
- 18th **Country Market** – 10–11am (Sheila Hobbs 01444 483396)

Please refer to the King Edward Hall notice board for additional information regarding the above events.

If you would like to hire the King Edward Hall please contact the Honorary Bookings Secretary for further information on telephone number 01444 483266 or by e-mail on bookings@kingedwardhall.org.uk

- 2nd **Lindfield Village Christmas Festival Night** – Charity stalls, shops open and Father Christmas on the High Street between 6–9pm (High Street closed between 5.30–9.30pm)
- 5th **Lindfield Primary School PTA Christmas Fair**
Lindfield Primary School, 4–6pm – Have your picture taken inside the Giant Snow Globe, Ride the inflatable Tobbagan and Sing Carols around the Christmas Tree. There's a great variety of wonderful stalls and games so come along and start your December off with an afternoon of festive fun!
- 6th **Tiger Arts - Handel's Messiah**
All Saints Church 7.30pm. Tickets £12, concessions £10 & children £5
- 7th **British Heart Foundation 'Fun-Run'** - Ardingly College. 10km run/jog (The Full Pud) and 5km run/jog (The Half Pud) 9.45am, 5km walk 10.15am. £10 for adults – includes free Santa outfit (bhf.org.uk/chasethepud or call John Higgins, Event Organiser, on 01444 482183)
- 10th **Tiger Arts Lunchtime Concert**
All Saints Church 1pm (light lunches served in Tiger from 12.15pm). Reme Sheridan (violin)
- 10th **Mid-Sussex Decorative and Fine Arts Society Lecture** - Clair Hall, Haywards Heath 10.15am for 10.45am. 'Musical and Cultural Life in Shakespeare's England' by Jeremy Barlow (www.mid-sussexdfas.org.uk)
- 11th **The National Trust Mid Sussex Association**
Winter lecture. Clair Hall, Haywards Heath 2.30pm. Tibet and Spitsbergen by John Apperley (455803)
- 13th **ROC on Saturday** – Lindfield URC Lounge 3–4.30pm. Over 55s fortnightly event
- 22nd **Sussex Chorus Family Carol Concert** – The King's Church, Burgess Hill. RH15 9LR 6.30pm. Carol concert with many carols to include audience participation. Tickets: £12, students and children under 16 £3 available from www.sussexchorus.org or 01444 412579

For more information on the local churches Christmas services, see page 26.

Our advertisers

CALL THEM!

Services

Vere (accountants)	3
CW Electrical	4
Lucy Locksmith.....	5
Masters & Son (funeral directors)	6
Meridian Wills & Trusts Ltd	8
Norsat (satellite & TV)	8
RiverPeak Wealth	9
Dwell (architects).....	10
Spink	11
Belle Casa (cleaners).....	12
Mid Sussex Decorators.....	13
Bonaventure Finance.....	14
Wagging Tails (dog day care)	21
Barnard & Brough (car dealer)	24
Jane's Sewing Services	30
C&G Plumbers.....	33
Oven Cleaners Sussex.....	33
Lee's Locks.....	35
Gregg Dale (records).....	35
Sussex Wealth Management.....	35
Dean Ferguson (electrician)	35
Whittaker Paving.....	36
PRB Accountants	36
Tom Seymour (IT support)	36
AJ Mullen (builder)	38
Drayton Plumbing & Heating.....	38
Lindfield Motors	44
Robert Simpson Construction.....	44
Dave Bailey (decorators)	47
SPB Plumbing & Heating.....	49
Flint & Co (estate agents).....	B

Retail

The Green Tree Gallery.....	9
Tufnells	12
The Leaping Hare Boutique	14
World Coffees	20
Oathall Farm Shop	22
Big Life Organics	23
Haywards Heath Golf Club	43

Out & About

Metrobus	2
Tiger Arts	5
Western & Oriental (travel)	7
Ardingly Choral Society	14
British Heart Foundation (event)	18
The Barefoot Players	20
Bluebell Railway	20
AV Cars (private hire).....	39

Education/Childcare

Norto5 Kidz (nursery)	3
Copthorne Prep School.....	4
Limepalm Productions (drama)	9
Tavistock & Summerhill School.....	12
Lindfield Art Studio	30
Burgess Hill School for Girls	34
Gielgud Academy.....	37
Ardingly Training Centre	46

Health/Lifestyle

Jakki Todd (beautician)	13
Phoenix Performance Centre	19
Talk for Change (psychotherapy)	30
Potential Personal Training.....	42
Six Physio.....	45
Lindfield Chiropractic Centre.....	49

Advertise with us

Go to www.lindfieldlife.co.uk for more information

Or speak to Matt or David on 01444 884115
ads@lindfieldlife.co.uk

Lindfield *Life*

flint&co




INDEPENDENT LOCAL ESTATE AGENTS

Professionalism
and integrity at
the heart of
everything
we do



Jane Todd
Managing Director

"From starter flats to large family houses – we've brought a genuinely refreshing approach to the local market. So do pop in or call if you're thinking of selling a property this winter."

 www.flintandcompany.co.uk  01444 62 77 62  sales@flintandcompany.co.uk
113 South Road (Haywards Heath High Street), RH16 4LR

Zoopla.co.uk
Smarter property search

 **rightmove**.co.uk
The UK's number one property website

 **PrimeLocation**.com

 The Property Ombudsman

