

Lindfield Life

Inc. Scaynes Hill & Walstead

Local village talk,
by the village

October 2011, Issue #31

Free

TV crew comes to Lindfield

Page 4

Raise funds for Macmillan Cancer Support

Page 7

News from the Parish Councils

Page 20

XPRESS REPAIR

SETTING A NEW STANDARD IN COMPUTER CARE



Anyone can do computer repairs, few do it successfully which is why we have two state-of-the-art stores with in-house repair centres so you can actually see us working on your repair. At Xpress Repair we believe that service should come with substance - **we are the only company to give a comprehensive 1 year warranty with all repairs.** We refuse to compromise on service standards and go to extraordinary lengths to look after our customers.

**WE FIX
IT ALL**

- ▶ LAPTOPS & PC SYSTEMS
- ▶ APPLE MACBOOKS & iMAGS
- ▶ MOBILE & SMART PHONES
- ▶ IPHONE SPECIALISTS
- ▶ IPADS & TABLETS

**1 YEAR WARRANTY ON ALL REPAIRS
FIXED PRICE REPAIRS
NO INSPECTION FEES**

HAYWARDS HEATH STORE

Orchards Shopping Centre - opposite Claire's | 01444 474 474

BURGESS HILL STORE

Market Place Shopping Centre - opposite KFC | 01444 458 458

Email: support@xpressrepair.co.uk | **Website:** www.xpressrepair.co.uk

EDITORIAL

By Emma Tingley, Editor

Welcome to the **October** edition of Lindfield Life. This month we have got lots of local news for you: both **Parish Council's newsletters** are inside and each contains invaluable information to keep you in the know. If there is anything else that you need to find out, then there are contact details for the Councillors and the Parish Offices. **The Preservation Society** brings us up to speed on the government's proposed changes to planning policy that has the potential to impact on our local environment. A brief consultation period comes to an end on 17th October so there is still opportunity to have your say.

The World's Biggest Coffee Morning is back in the village this year, but with a twist! No coffee and not in the morning! Local business **The Wine Teacher** is putting on a special evening event to raise funds for **Macmillan Cancer Support**. And if you want to know more about the work of Macmillan check out the article alongside it on p7 by the Haywards Heath Committee who are putting on an event in November to raise much needed funds for The Sussex Macmillan Cancer Support Centre in Brighton.

An ITV television crew has recently visited the village and **World Coffees** will be featured in an episode of a new series due to be aired in the new year – so watch this space for more info!

If Christmas is beginning to creep on to your radar, then make sure that you are free on Tuesday 11th October as the Mid Sussex Branch of the **British Heart Foundation** are holding a coffee morning and Christmas card sale – it's never too early to get started.

We've got a timely reminder from one of our High Street traders of the importance of shopping locally. We've got a fantastic High Street and it would be so sad to see shops close, but we've got to support them if they are going to stay. Over the coming months we'll be exploring more of what our local retailers have to offer.

Lindfield Life Published by Kipper

Issue #31 – October 2011 –
4,300 copies printed

Next magazine copydate:
8th October 2011

Next magazine published:
25th September 2011

Lindfield Life

Brooklands Barn, Rocky Lane,
Haywards Heath, RH16 4RR

Telephone 01444 884115

Fax 01444 473888

www.lindfieldlife.co.uk

Editor: Emma Tingley
<editor@lindfieldlife.co.uk>

Advertising: David Tingley
<ads@lindfieldlife.co.uk>

Disclaimer: The opinions expressed within the magazine are of the individual authors and not necessarily those of the editors. Whilst the editors welcome contributions & photographs, this is on the understanding that there is no obligation to include them and that the item may be edited & that there is no breach of copyright. Neither the editors nor the publisher accept any liability in respect of the content of any article, photo or advertisement.



 Paula Clark
'Autumnal Light in Walslead'

THE CLEANING SERVICE
BELLE CASA
Beautiful Homes

We know how hard it can be to find a dependable and honest cleaner, which is where we can help.

We can offer you professional cleaning and ironing for a fully inclusive rate of only **£10.25 per hour** (minimum of 2 hours per week).

All of our cleaners are specially selected, and insured, and you will receive the same cleaner each week.

So, if you'd like to take the pressure off keeping up with your household chores, then call us today on:

0871 951 2345
UK National Call Centre
Callership available outside office hours

or visit our website:
www.bellecasa.co.uk



Mid Sussex Decorators

Painting, Decorating & Tiling
Interior & Exterior
Guttering, Soffits, Facia Boards;
installed, repaired, cleaned
Pressure Jetting Service

*Family Business. Established over 20 years.
Fully Insured.*

01273 841964
01444 831147
07535 760954



Television crew comes to Lindfield

OPEN FOR BUSINESS

Television presenters Dick and James Strawbridge visited World Coffees in Lindfield to film for their new series "Hungry Sailors" which is to be broadcast in the new year. The father and son team are sailing from Cornwall to Kent in a traditional frigate and stopping off along the way to meet unusual local food producers. To the viewers, the duo arrive in Lindfield on their bikes, taking in the village sites, before heading to World Coffees on Denmans Lane. But local residents may have seen the film crew, along with the presenters, arriving in the huge production lorry! At World Coffees they had a go at roasting and tasting beans from Sumatra, Brazil, India and Kenya, and then invited owner Jackie McGahan aboard to share in a delicious meal prepared by them from ingredients sourced during their travels. Naturally, the meal finished with a cup of the finest World Coffees beans roasted by James and Dick in Lindfield and ground in their bespoke wind powered coffee grinder.

The opportunity to be involved in the TV series came about when the producer visited Lindfield with a friend who was house hunting. Whilst exploring the High Street, they discovered World Coffees and felt it was perfect for the series. The episode which features Jackie and her colleague Miranda also includes other local food producers such as High Weald Dairy and Ouse Valley Foods. Hopefully we'll be able to bring you details of when it is being aired later in the year – so watch this space!

HOME
SMITHS

Interior design by HomeSmiths

Made to measure curtains and blinds, a wide range of tracks and poles, a great selection of fabulous fabrics and plenty of creative inspiration for windows of all shapes and sizes.



"Thank you, the curtains and blinds are fantastic ... stunning." J Show, Forest Row

For your free consultation, please call Jacqui or David Smith on 01444 440880 or visit www.homesmiths.co.uk

First Christmas Coffee Morning?

The Mid Sussex Branch of the British Heart Foundation are getting into the festive spirit already with a coffee morning and Christmas card/gift sale. Head along to Pierpoint House (110 High Street) on Tuesday 11th October (10am – 12.30pm) and not only help them raise funds, but enjoy some refreshments and make a start on your Christmas shopping. Put the date in your diary now!

Free Book Tokens

We love kids book reviews in Lindfield Life and we are always pleased to receive them. Does your child/nephew/grandchild enjoy reading? Would they like to spread the word about their favourite book and become a published writer? For each children's book review we publish we will happily reward the author with a Book Token, so why not get involved today? Email your contribution to editor@lindfieldlife.co.uk for the opportunity to get in print!

Rosemary Conley Diet and Fitness Clubs

Weigh in, work out, weigh less!

MONDAY
Queens Hall
High Street, RH17 5EL
10:30 - 12:00 pm

London Mead School
Chanctonbury Road,
Burgess Hill, RH15 9YQ
6:00 - 7:30 pm
7:30 - 8:30 pm

TUESDAY
Handcross Parish Hall
High Street, RH17 6BJ
09:30 - 10:45 am

St Josephs RC Primary School, Hazelgrove Road, RH16 3PQ
5:30 - 7:00 pm
7:00 - 8:30 pm

WEDNESDAY
The Triangle, Olympos
Burgess Hill, RH15 8WA
11:00 - 12:30 pm

WEDNESDAY
Southway, Junior School, Southway, RH15 9SU
6:00 - 7:30 pm
7:30 - 8:30 pm - (Slim & Zumba)

THURSDAY
Millennium Village Centre, Lewes Road, Scaynes Hill, RH17 7PG
11:00 - 12:00 pm

St Josephs RC Primary School, Hazelgrove Road, RH16 3PQ
6:00 - 7:30 pm
7:30 - 8:30 pm - (Slim & Salsacise)



Free £10*
Membership

Free Pack worth £25

More for Your Money! WE DO EXERCISE TOO

Call Alex on 01293 408730
email: alex.duffy@rosemaryconley.com

* Class Fee £5.80. When you pre-pay £29 for 5 weeks - new members only. Bring ad to claim. Valid until End Nov 2011

Highley Manor Hotel

EXCLUSIVE USE
Luxury at affordable prices



Weddings
Ceremonies
Conferences
Wakes
Private Parties
Mothers Day
Christmas Parties

Crawley Lane, Balcombe, West Sussex RH17 6LA Telephone 01444 811 711 Fax 01444 811113
Email highleymanor@btconnect.com www.highleymanorhotel.co.uk

**Lindfield
Motors**

Lindfield Motors for your next car service.

- ✓ Friendly welcome
- ✓ Top quality service
- ✓ Realistic prices
- ✓ All makes cared for
- ✓ Family owned for over 30 years
- ✓ MOT testing station

Many people in the village have used us for years, why not join them?



Tel: 01444 482988 / 01444 483988

Lewes Road, Lindfield, RH16 2LG www.lindfield-motors.co.uk



LINDFIELD PEST CONTROL

MOLES - RATS - WASPS etc

MICK LEWRY

01444 483137

MOBILE: 07816 630455

Email: m.lewry1@btinternet.com



THE NATURAL THERAPY ROOMS

now at
Essential Chiropractic
Clock Tower House, Lindfield Enterprise Park

25% off
treatments booked by 30/9/11
(excludes Metabolic Balance®)

Angel Readings
Aromatherapy
Baby Massage
Homeopathy
Metabolic Balance®

NLP & Hypnotherapy
Nutritional Medicine
Reflexology
Reiki Healing
Theta Healing™

01444 456699

www.thenaturaltherapyrooms.co.uk



Macmillan Cancer Support Dinner

There can't be many people who have never heard of Macmillan Cancer Support and the invaluable work it does within our community. Many families in our area have been helped through the very difficult time of having a loved one struggling with this disease.

But did you know Macmillan is celebrating 100 years this year? In 1911 a civil servant, Douglas Macmillan, who lived in Castle Carey, Somerset felt helpless witnessing the suffering of his father in his terminal stages of cancer. With a gift of just £40 he formed The Society for the Prevention and Relief to give help to cancer sufferers and research preventative treatments. With originally just 40 members and supported only by donations, just as today, the first 10 years were difficult but after redefining the aims of the charity to focus on cancer care he changed the name to the National Society for Cancer Relief. Within twenty years the society was providing financial help with travel costs, medicines, clothing and home visits from patient visitors, as do Macmillan nurses today. Douglas Macmillan died in 1969 (ironically from cancer) but he saw his idea grow to what it is today.

The first Macmillan nurses began working in the 70s and the charity changed its name to the Cancer Relief Macmillan Fund. There are now over 3000 Macmillan nurses providing support at home and in hospital. We have four working in The Princess Royal Hospital. Still totally funded by your support, donations, legacies and direct marketing, the charity raises and spends over £115 million a year. Every penny you give counts. The Haywards Heath committee was formed in 1975 and has raised thousands of pounds with coffee mornings, bring-and-buys, and collections.

Now they are raising funds to build The Sussex Macmillan Cancer Support Centre in Brighton and urgently need to raise an additional £3.7 million towards the total building cost of £5.7 million and to cover staff costs for four years.

To mark this special year they are hosting a dinner at Jeremy's Restaurant at Borde Hill on Friday, 18th November at 7.30pm. Tickets are £40 per person including aperitifs, a superb three course meal, coffee and petit fours. Please join us for a very enjoyable evening.

Macmillan would like to say a big thank you to Savills Haywards Heath for supporting this event. Their valuable contribution and goodwill is hugely appreciated. For tickets please call David Metcalfe on 01444 415060. Numbers are limited so call right away!

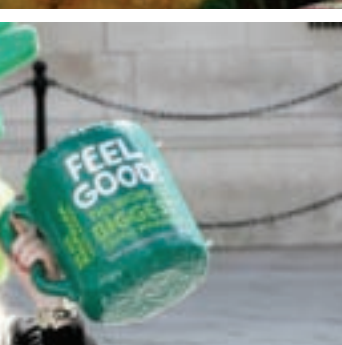


Coffee Morning with a difference!

This month Macmillan Cancer Support will be running their annual fundraising event – The World's Biggest Coffee Morning. And this year it's not just about the coffee. Macmillan says "We want our supporters to do whatever suits them - and have fun doing it. Whether it's a traditional coffee morning or something different altogether – a garden party or karaoke night - the main thing is getting together with friends and knowing that your collective efforts are making a huge difference to people affected by cancer."

To support the event local business The Wine Teacher has decided to host a coffee morning – but in the evening and with wine instead of coffee! The event takes place on Friday 14th October at The Wine Teacher's Lindfield venue (just off the High Street) from 8-10pm. No tickets but they will be asking for donations on the night and people are asked to put their names down beforehand to ensure there is enough room. During the evening there will be a raffle as well as light nibbles alongside a tutored wine tasting.

For more information about the event, please call Victoria on 01444 487760 or email victoria@thewineteacher.co.uk. For more information about Macmillan Cancer Support, please visit www.coffee.macmillan.org.uk.



Lindfield Life

Book
before
8th
Oct

Advertise to your
local audience
every month
from just £50+VAT

Call David on 01444 884115 or
email ads@lindfieldlife.co.uk
More info at www.lindfieldlife.co.uk



Shop local

By Neil Tofield

Lindfield High Street has a wonderful array of independent shops offering a fantastic range of products including food, drink, gifts, clothing and much more.

However, recent years have seen a significant increase in the closure of local shops up and down the country due to factors such as the onslaught of big chains, recession and rising rents. In fact, so serious has this problem become, the Prime Minister has appointed Mary Portas, retail guru and presenter of TV's 'Mary, Queen of Shops', as retail advisor to the Government. This important role has been created to help reverse the decline of independent shops and her role will be to encourage, support and protect them, thus giving them a new lease of life.

So, why should you shop locally? Well, you've probably noticed that the High Streets of Britain are becoming 'clone towns', where the same well-known chains and franchises have taken over, pushing out the smaller, independent shops. It's a known fact that independent shops help to create a diverse shopping experience, creating local jobs, keeping local communities alive and providing services to the community, especially the elderly, vulnerable and those without transport. It's also worth noting that the chain stores have done a terrific job of convincing us that local shops are expensive. However, this is often not true – local shops often work out cheaper when you take into account factors such as travel costs, parking and those annoying 'Buy One, Get One Free' offers which encourage you to buy more than you need. Evidence also shows that local shops provide greater customer care and service.

We need your help to keep our local shops and communities alive. Next time you go shopping, consider making better use of your local shops. After all, if you don't use them, you'll lose them for good and destroy the local community and shopping experience of which Lindfield can be proud.

Jakki Todd
The Lindfield Beautician

Jakki is an Aesthetician with over 30 years experience offering Beauty Treatments, Electrolysis & IPL Permanent Hair Reduction in a private home with parking facilities.

- Facials
- Waxing
- Electrolysis
- Aromatherapy
- St Tropez Tanning
- Red Vein Removal
- Manicures and Pedicures
- IPL Permanent Hair Reduction

Gift Vouchers Available

For full Treatment List & Prices visit www.jakki.net
Email: info@jakki.net
Tel: 01444 487474

APPOINTMENTS ONLY

beauty therapy and electrolysis

The Snowdrop rediscovered

By Alan Williams, Lindfield Life Reader

An advertisement in *Lindfield Life* reminded us of the existence of this little inn towards the top of Snowdrop Lane. 'Refurbished' it said and, as we had not been to it for over a decade, we thought now was the time to go again.

We were not disappointed. A warm welcome from our waitress, Caroline, started the evening well. My wife chose calves liver and bacon, with savoy cabbage ("beautifully pink, the cabbage crisp and full of flavour, just how I like it") and I elected for the beef madras curry prepared by resident chef, Biju. My concern that it might be too bland was proved unwarranted; but I do like hot curries, particularly those that are not just hot but have the flavour of the spices present too!

Ferret is perhaps never going to be my favourite bitter but my wife enjoyed the full roundness of the Cabernet Sauvignon, complementing the tender liver.

"Lemon meringue pie can be hard and wooden – this one was perhaps the best I've tasted," said my wife; while I found the pistaccio ice cream delicious.

The whole meal was served by Caroline with concern, interest and care. And we got change out of £35 (including the tip). While the décor was a little hard for my taste, the ambience was friendly and warm. This is certainly a place we will go back to.



- ✓ Patios & Paths
- ✓ Driveways
- ✓ Fencing
- ✓ Decking
- ✓ Garden Design
- ✓ Brickwork
- ✓ Tree/Hedge Cutting
- ✓ Turf laying



Friendly and professional garden service

Free estimates & written quotations

(01444) 250 000

mail@robinsonlandscaping.co.uk

FIELD + FORREST DELICATESSEN



Come and visit us for all your fine food needs

- We bake our own bread, cupcakes, cakes and award-winning pork pies each morning on the premises
- We stock a wonderful range of premium hams, smoked salmon and pates, as well as fantastic cheeses, olives and antipasti
- We also sell our own unique range of teas and coffees
- Hampers, cheese platters and gifts for all occasions



43 HIGH STREET LINDFIELD RH16 2HN
TEL: 01444 483700 WWW.FIELDANDFORREST.COM





Lindfield Parish Council Newsletter

Oct 2011

Parish Office: 6 Denmans Lane, Lindfield, West Sussex, RH16 2LB
Telephone: 01444 484115 Fax: 01444 484918
Email: clerks@lindfieldparishcouncil.gov.uk
Web site: www.lindfieldparishcouncil.gov.uk



Christmas Festival Night - Tuesday 6th December

Preparations for Christmas Festival Night are already under way. It will be on a Tuesday again (6th December) as this seemed to work quite well last year.

PLEASE NOTE – THE PARISH COUNCIL OFFICE WILL **NOT BE OPEN TO THE PUBLIC IN THE AFTERNOON OF TUESDAY 6 DECEMBER AS WE'LL ALL BE BUSY PREPARING FOR THE EVENING.**

Father Christmas is expected at the United Reformed Church at 6.00 pm. The High Street will be closed from 5.30 - 9.30 pm with diversions in place and the festivities will begin around 6.00 pm and finish by 9.00 pm. We hope plenty of people will take stalls – letters will have gone out to regular stall holders, but please contact Pieter Hemsley at the Parish Office if you have not received a letter and would like to book a stall – 01444 484115 or p.hemsley@lindfieldparishcouncil.gov.uk. The charge for stalls will be £7.50 for charities and £15 for traders and there will be no refunds unless the event is cancelled by the Parish Council. We would like to remind any organisations thinking about selling beverages containing alcohol that you will need to apply for a Temporary Event Notice from the Safety & Licensing Team at Mid Sussex District Council – telephone 01444 477294. Stall holders will have to bring their own tables and chairs and, as the High Street is pretty dark in places, we suggest bringing some battery operated lighting for the stalls.



Litter Bins and Seats

The Parish Council has agreed to refurbish the wrought iron litter bins in the village centre in three batches over the next few months. Four of the bins in the first batch will not be replaced in their present locations, as some areas are thought to be overprovided with litter bins. Instead, they will be used to replace four of the bins removed for renovation in the second batch which means there will be fewer gaps and coned-off stanchions during the work. The refurbished bins left over at the end of the programme will be stored in case of damage to other bins, or to be used in a new location if a future need is identified. Wooden slatted bins are to be replaced gradually by a commercially produced metal litter bin – the same model already installed by the bus shelter at the Oathall end of West Common, by the seat in Denmans Lane, at the corner of Hickmans Lane and Compton Road and in Hickmans Lane opposite Brookway. We have also arranged for a number of seats along the High Street, Black Hill and West Common repainted and repaired.

Members of Lindfield Parish Council:

They can all be contacted, in the first instance, via the Parish

Cllr. William Blunden
(Chairman)

Cllr. Valerie Upton
(Vice Chairman)

Cllr. Margaret Hersey

Cllr. Michael Amor

Cllr. Mike Allen

Cllr. Jane Chatfield

Lindfield Parish Council Office is open on Tuesdays 1.00pm to 4.00pm, Thursdays and Fridays 10.00am to 1.00pm – when members of the public are welcome to come along to look at planning applications for Lindfield, apply for bus passes and obtain railcard vouchers, or simply seek advice on issues of concern. However, if you do need to speak with someone outside our normal opening hours, then please contact the Clerk who will be happy to make alternative arrangements with you.

Parish Clerk:
Mrs. Christine Irwin

Deputy Parish Clerk:
Mr. Pieter Hemsley

Responsible Financial
Officer: Mrs. Sue Kolien



High Street Verges

We hope you will agree that the grass verges in the High Street are looking much better this year, in the second season of being mown properly and regularly. Last year the Parish Council obtained a licence from West Sussex County Council to maintain these verges and we now pay Haywards Heath Town Council for their groundsmen to mow the verges fortnightly during the growing season. We have also arranged for them to plant more crocus bulbs this autumn to enhance the display next spring.

Dumping of cat litter

In the last newsletter we reported two occasions when several bags of used cat litter had been dumped in Denmans Lane car park. This happened again in August and both the Parish Council and Mid Sussex District Council would welcome any information that would help identify the culprit.

Bus Shelter

Several months ago it came to our attention that people waiting for buses in the shelter near The Welkin frequently got soaked when cars drove through the large puddle that forms there, so the Parish Council has arranged for kick panels to be added to the bottom of the shelter. We hope they are doing their job of keeping the water out.

WINTER WEATHER

Winter is fast approaching and here's hoping that it will not be as severe as the last two. The Government's 'Snow Code' gives advice on clearing snow and if this advice is followed there should be no risk of successful litigation in the case of subsequent accidents.

'The Snow Code' can be found on the official UK Government website:

http://www.direct.gov.uk/en/NI1/Newsroom/DG_191868

The Parish Council's Winter Management Plan has been reviewed and is on our website:

www.lindfieldparishcouncil.gov.uk

Office, or by reference to the Lindfield Village Directory and Year Book, which contains details of individual contact numbers.

Cllr. Lester Corp

Cllr. Christopher Snowling

Cllr. Alan Gomme

Cllr. Ron Plass

Cllr. Stephen Henton

Cllr. Simon Hodgson

Mobile Civic Amenity Collections

The refuse freighters will be in the Tollgate car park on Sundays 13th November 2011, 22nd January and 11th March 2012, between the hours of 10.00 am and 12 noon, for the collection of household and garden waste. Please note that due to current legislation they cannot accept items such as televisions, computer monitors and fluorescent tubes. These can still be taken to a civic amenity centre. Please do not leave rubbish in the absence of the refuse freighter.

POLICE SURGERIES

Our Police Community Support officer, Stuart Clough, continues to hold a surgery once a month in the Parish Office for residents to come along and raise any issues of concern. The next surgeries will be on: Thursday 20th October 10.00 -11.30 am, Tuesday 22nd November 1.00 – 2.30 pm and Thursday 22nd December 10.00 – 11.30 am.

Parish Council meetings

Oct - Dec 2011

Thursday	6 October	Environment and Amenities Committee	8.00 pm
Tuesday	18 October	Planning and Traffic Committee (Full)	8.00 pm
Tuesday	8 November	Planning and Traffic Committee (Plans only)	8.00 pm
Thursday	10 November	Full Council	7.30 pm
Thursday	24 November	Finance and General Purposes Committee	8.00 pm
Tuesday	29 November	Planning and Traffic Committee (Plans only)	8.00 pm
Thursday	8 December	Environment and Amenities Committee	8.00 pm
Tuesday	20 December	Planning and Traffic Committee (Full)	8.00 pm

All meetings are held in the King Edward Hall, unless shown otherwise. Please check the noticeboard in Denmans Lane for any additional meetings that may be called. All meetings are open to the public and there is a period set aside at the beginning and end of each meeting for public questions/comments, except at "plans only" Planning and Traffic Committee meetings. At meetings of the Planning and Traffic Committee, up to two people for and two against each planning application are allowed to speak, for a maximum of two minutes each, at the invitation of the Chairman.

IMAGINE, DESIGN, CREATE, PLAY, EXPERIMENT, FRIENDLY & FUN DAYS!

OCTOBER HOLIDAY ART CLUB

leesalemay@btinternet.com
www.leesalemay.co.uk

come along to the studio 4
painting, sculpture, fun &
mess!! - just bring a
packed lunch & fab
imagination!!

Tuesday 25th
Wednesday 26th
Thursday 27th


to book a place 4 your
child/children please
call 07738288730

10 - 2 pm £20 all materials
included

1, 2 or 3 days can be
booked - email 4 form!



IMAGINE, DESIGN, CREATE, PLAY, EXPERIMENT, FRIENDLY & FUN DAYS!



MagiKats

Maths and English

ALL AGES ALL ABILITIES ALL ACHIEVERS
MagiKats works on parallel threads:




THE WORKSHOPS:

- *build understanding of topics needed at school
- *help with problem areas
- *tackle more advanced material
- *teach in small groups

THE HOMEWORK:

- *is set according to the individual's needs
- *strengthens core skills
- *fills gaps and builds strong foundations
- *builds confidence

CLASSES AT THE KING EDWARD HALL,
LINDFIELD
CALL 01273 473757 or visit
www.magikats.co.uk

DEAN FERGUSON

YOUR LOCAL
ELECTRICIAN

PART 'P' REGISTERED

OVER 20 YEARS EXPERIENCE
ALL DOMESTIC ELECTRICAL WORK UNDERTAKEN
PERIODIC INSPECTION REPORTS
FREE ESTIMATES GIVEN

NO JOB TOO SMALL

Tel: 07754 000147
Email: salandean@ukonline.co.uk

Lindfield's response to new National Planning policy



By Gill Kennedy, Lindfield Preservation Society

The government recently published a 'Draft National Planning Policy Framework' for public consultation. This draft is a radical departure from the 'localism' promised before (and for that matter after) the election. For example, the default response to proposals for so-called 'sustainable development' is now to be 'yes'. The priority of brown field over green field development is gone. The promised right of appeal for communities is gone (but remains for developers).

National planning policy is being recast to encourage short term growth for developers and construction firms, regardless of the consequences for local people.

Lindfield has recently been forced to accept an inappropriate, high density development, only for developers to continue lobbying the district council for more of the same. We are by no means alone in facing this threat. The government's draft policy would tilt the playing field even further in the developers' favour, increasing the risk of communities across Sussex being transformed into sprawling urban landscapes – without the infrastructure to support them.

The Campaign to Protect Rural England and The National Trust have both organised national campaigns urging the government to retract these proposals. As in the case of an earlier, ill-conceived government plan to sell off the nation's forests, public opinion can make a difference – if the level of opposition is too high to ignore.

All concerned residents can help by making their objections clear to their representatives in Parliament before the brief consultation period ends on 17th October.

The Campaign to Protect Rural England has a useful link on its homepage www.cpre.org.uk for sending an email to your MP. It provides a standard letter, which can be edited if you wish and then sent off with the press of a button.

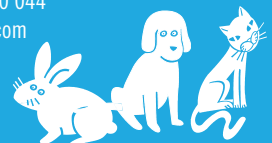
VOL PET AND HOME SERVICES

www.vdlpetandhomeservices.co.uk

- 1 hour dog walks from £8
- 30 minute walks £5
- Providing pet services including feeding animals, watering, changing litter trays and petting
- House services, including watering plants, opening/closing curtains, taking in post

- Based in Lindfield, a flexible, happy service
- With a BTEC in Animal Care and work experience with the RSPCA I am fully trained and extremely comfortable in the handling of all animals
- No pet too big or small and will all receive cuddles and love they need when their owner is away!

Please contact Vicky on 01444 210 044
or email vdlpethome@gmail.com



Tapping potential

HOME FRONT

By Jacqui Smith

As a husband-and-wife run business David and I do see rather a lot of one another. Living and working together is not everyone's idea of fun but it works for us, largely because when it comes to interior design we each have areas that we are either better at than the other or quite simply enjoy more. Bathrooms are David's thing. Where I will pore over new fabric collections, my technically minded husband and business partner will drool over new tap catalogues and sleek sanitary ware. When met with a new brief from a client for a bathroom or shower room, David is in his element. So, since most of these articles are about my take on interiors, I thought it was time to hear from the other half of HomeSmiths. Here are David's tips on what's new and exciting in the world of taps...

When it comes to basin taps, I love waterfall taps such as the Crosswater 'Love Me' tap or the 'Water Square' tap. The 'Love Me' taps are graceful and elegant, with curves to soften the edges and corners; quite a feminine tap compared with the 'Water Square' which is altogether a more masculine creation and has the added feature of LED lights. The integrated LEDs are blue when the water is cold and as the water becomes hotter, the lights turn the water red. Crosswater is a good representative of the mid-range brassware, with a great selection from ultra modern to the more traditional end of the market.

If budget is a key consideration then I would suggest having a look at Bristan. Their 'Oval' range is sleek and elegant and one we use in some of our show homes. You could also consider Deva who sell a range called 'Lush'.


If you are planning a money-no-object-scheme then the choices of taps get really exciting! In my opinion, the Aston Martin of brassware is Axor Hansgrohe; their range has been designed by the elite in architectural design such as Phillippe Stark and Jean-Marie Massaud. My *ultimate* bathroom would have the Axor Massaud basin mixer pouring into an Axor Massaud washbowl. The Massaud bath would have a floor standing single lever Massaud bath mixer with separate hand set; more elegance than you can imagine in a bathroom.

A couple of things to think about when choosing taps: Don't be tempted to buy from the large DIY stores. These products are made in China and cheap since they are poor quality, covered in a thin layer of chrome and the route the water takes through the tap is fairly rough so the flow of water is poor.

Be aware of your water pressure – if you have a gravity fed system don't buy a tap that requires more than half a bar of pressure or the water flow will be poor. A pressurised system such as a combination boiler will widen your choice of taps.

Spink.

Exciting
job
opportunity



Thriving PR and marketing agency
requires creative and dynamic
individuals to manage campaigns for
leading health and lifestyle brands.

Relevant experience in the medical,
health or beauty sector is essential.

Contact Justin on 01444 811099 or
justin@spinkhealth.com

www.spinkhealth.com

kps

tree services

- Grounds Maintenance
 - Landscaping
 - Tree Work
- Stump Grinding
- Turfing & Fencing
- Hedge Trimming
 - Planting
- Site Clearances

Established for over 40 years.
Approved Contractor and Member of the
Arboriculture Association.
All work to BS 3998 Standard.

Free estimates and written quotations.

01444 831307

www.kpscontractors.co.uk





Thank God for tea!

SIMPLY GOOD FOOD

“Thank God for tea!
What would the world
do without tea? How did
it exist? I am glad I was
not born before tea.”

Sydney Smith (1771 - 1845)

LAPSANG SOUCHONG BARBEQUE SAUCE.

Using a large saucepan tip in 400g can chopped tomatoes, 175g tomato paste, 175ml water, 50g soft brown sugar, 1tbs mustard, 125ml grape or redcurrant jelly, 2tbs Worcestershire Sauce, 2tbs soy sauce, 3tsp chilli powder, 3tbs lemon juice, 1tbs onion and garlic powder (I use some finely chopped fresh onion and 2 crushed garlic cloves) and 3tbs Lapsang Souchong tea leaves. Bring to the boil, stir, cover and simmer for 20 min, stirring occasionally. May be made ahead and chilled – reheat before use and I think would be ok frozen though I have not tried this.

For reliable
Renewable Energy Solutions



**Call the
local
experts!**



BSW are fully qualified and accredited in renewable energy technologies including Heat Pumps, Solar PV and Solar Thermal Systems for your home.

BSW
BUILDING SERVICES

01444 831138
www.bsw-bs.co.uk



REA ✓

By Caroline Young

Tea plants grew wild in China until about 4,000 years ago when they realised how good it was as a drink and began to cultivate it. It was not until the 8th century that Japan discovered it and it took eleven more centuries before Europeans began to drink it. We can take credit for spreading its popularity and also implementing new growing areas such as in India. We even invented a meal called "tea"! We now have a very extensive range of teas to choose from and many add great flavour when used in cooking. Try my very moist tea bread and the other ideas. Our new 'deli' Field and Forrest stock some superb blends, including a pure unadulterated Earl Grey. They also kindly gave me their own recipe for a delicious barbeque sauce which goes extremely well with grilled sausages and hamburgers as well as barbequed meats. Try using it for a marinade for red meats too.

FRUIT AND NUT BREAD

Preheat the oven to 180oC/gas 4. Grease and line a 9"x5"x3" loaf pan. Put 300ml cold strained strong tea (I use Assam or Darjeeling), 100g butter, 125g chopped dates, 125g chopped dried apricots and 100g soft brown sugar into a large saucepan. Stir over low heat until the butter and sugar have melted. Leave to cool until lukewarm. Sift in 250g self-raising flour, 1tsp bicarbonate of soda, pinch each of salt and mixed spice. Mix well with a wooden spoon then tip into the prepared pan. Bake for 1 hour then cool for 10 mins before transferring to a cooling rack to cool completely.

PRUNE AND FIG COMPOTE

These dark fruits are delicious marinated in a syrup flavoured with tea and honey. Place 225g each of whole prunes and dried figs in a serving bowl and make the following syrup. In a small pan measure 600ml strong Indian or Chinese black tea or use Lapsang Souchong tea and 115g honey. Bring just to the boil, stir and simmer for 5 mins (make sure the honey has dissolved). Strain over the fruits, cover and leave overnight. Delicious served with natural yogurt.

Other ideas worth trying are using green tea as the liquid when making a vegetable soup, using citrus and ginger tea to make the syrup when poaching pears or (used cold) to make a green melon and kiwi fruit for a refreshing 'green' fruit salad. Be adventurous!

Book NOW for your **FREE** Personal Training Session

An exclusive personal training studio* located in the centre of Haywards Heath. Personal training is provided in a un-crowded and friendly environment.

***Train at a time to suit you *guaranteed results!**

We also offer the following classes:

- Zumba Pilates.
- Yoga Fab Abs.
- Pole Dance Boxercise.
- Legs bums &Tums.

No membership required!



For more information visit our website:

phoenixperformancecentre.co.uk
or call 07771 813235 / 07775 039332

We guarantee great results!

Caravaggio - A life sacred and profane by Andrew Graham-Dixon

BOOK REVIEW

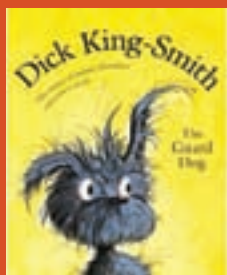


By Cavan Wood

I was privileged to hear Andrew Graham-Dixon give a public lecture on Caravaggio this summer. What emerged from the talk and this book was the life of an artist whose genius was only matched by his capacity for self-destruction. There are many myths about Caravaggio which the author by his painstaking research is able to show are inaccurate. The artist was a combination of alcoholic fuelled quarrel seeker and deeply pious, a contradiction that is well illustrated. Graham-Dixon is unafraid to say where he feels that the artistic establishment has misunderstood his subject. Many critics complain about the darkness in Caravaggio's paintings for instance, but he shows that this isn't the absence of the ability to fill the canvas with fully developed portraits but wanting to allow the viewer to centre on what is most important in the image not the least significant aspects. The tragic loss of so many of his family to plague clearly shaped the artist's life, which the author argues was the cause of the great contradictions in his life, as he lacked authority figures or people he could respect to help him develop, especially as all the key males he was related to were all wiped out in under three days. This is a masterly study which will help you understand a life, art and the work of art critics more.

The Guard Dog by Dick King Smith

BOOK REVIEW



By Georgie Tingley, Age 8

In the pet shop there was a very peculiar mongrel dog. The other dogs thought him silly because he was so small. One day the old wise dog said maybe his bark is worse than his bite. So the guard dog showed off his terrible, terrible bark. Finally one day a tall thin lady with a fat chubby girl came to buy a pet dog. The girl said with her thumb in her mouth "me want that one!" So they bought him. After a few days they got fed up with the dog because he made the most terrible noise in the mornings and he pooped on the floor. So they took him to a dogs home. On his last day a man bought him. When the man left the pet shop he said "I should have bought a guard dog". But we all know that he was a guard dog with his horrible noise. It was a brilliant book. It was funny and I really enjoyed it!

DISCOVER THE SONG IN YOUR VOICE

"Singing enhances the feeling of well-being."

Liz Hinze (B.A. Hons.)
Tel: 01444 452697
Email: liz.hinze@talktalk.net
CRB checked

Have relaxing lessons with a very experienced solo and choral singer. Liz teaches adults and children (7+). Please phone or email for more details.

SPECIAL OFFER

3 lessons for the price of 2 in Sept, Oct, Nov.

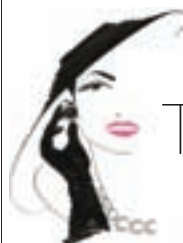


Step into Vintage Glamour

Classic cuts and styles, quality fabrics and workmanship go some of the way to explaining why vintage clothes have never gone out of fashion. However, today vintage clothing is reaching new heights of popularity with outlets opening all the time and celebrities embracing the trend wholeheartedly. Not to mention the influence of Mad Men...

Of course you don't have to be famous or have a Hollywood-size bank account to wear gorgeous vintage clothes! The joy of vintage is knowing that no-one else is going to be wearing the same thing. From a gorgeous cocktail dress to a fabulous blouse to go with your skinny jeans, an amazing handbag or stunning jewellery there

is something for every size, shape and budget. The Toll House in Lindfield stocks a great range of vintage clothes, accessories and homeware as well as serving great coffee and cake in their cafe. Coming up to its first anniversary in the village, the Toll House is launching a new calendar of exciting events to celebrate vintage with style. Join them for an evening of Cocktail Cupcakes and Wine on the 13th October, an opportunity to explore the Toll House with friends. Then on the 13th November find that perfect Little Black Dress, enjoy wine from South Downs Cellars and tasters from local deli Field and Forrest. Drop in to find out more and book your ticket!



The Toll House

The Boutique with a difference selling true vintage pieces. Café serving breakfast, lunch, tea, coffee and delicious home made cake!



Clothes, Handbags, Shoes, Jewellery and Homewares. Spend time visiting our rooms filled with fabulous vintage clothes, beautiful vintage jewellery and unusual, nostalgic gifts, all sourced from a time gone by.

Mon - Fri 09.00 - 17.00
Sat 10.00 - 17.00
(Cafe closes at 16.30)



56 High Street, Lindfield
www.thetollhouseinlindfield.co.uk
Tel: 01444 482 200



Mid Sussex Design
Architectural Design Services

Surveys - Design - Planning Applications -
Listed Building Consent - Building Regulations -
Tender Packages - Project Management

01444 414442
07980 920621

info@midsussexdesign.co.uk
www.midsussexdesign.co.uk

n.whittaker

landscaping & paving

Tel (01444) 450300
contact@nwhittaker.co.uk
80, Savill Road, Lindfield RH16 2NN



ALL TYPES OF
BRICK DRIVEWAYS,
PATIOS, PATHS, GARDEN WALLS,
LANDSCAPING ETC.

Approved By Trading Standards
(Established 1979)
www.nwhittakerpaving.co.uk

Lucy Locksmith

24hr Callout
No Callout Charge



BRIGHT FM & CHECKATRADE
"Top Trader of the Year 2008"
Award Winner

Rapid Response • Police checked
Free Estimates • No VAT
Discount for Senior Citizens
Locks Changed & Upgraded (To BS3621)
Lock outs, Break ins, all makes of locks
Friendly female staff
Have you just moved?
Who else has a set of your keys?
For peace of mind do you need your locks changed?
Do your locks comply with your home insurance?



07780 840462

"Store this number on your phone,
you never know when you will need it"

STEPHEN GALLICO SOLICITORS

We provide a personal and professional legal service to private individuals, families, executors and trustees, and business people particularly in the areas of:

Probate & Administration of Estates
Tax Planning, Inheritance Tax Saving
Wills and Trusts

Trust Administration
Powers of Attorney
Court of Protection

We also deal with all residential property matters including:

Purchase & Sale of Property
Property Sales for Executors & Trustees

Mortgages

and all commercial property matters including:

Offices and Shops
Industrial Units

Licensed Premises
Development Land

In addition we can assist both employees and employers on work related matters such as:

Termination of Employment
Compromise Agreements
Contract Negotiation

Unfair Dismissal
Redundancy
Discrimination

Conveniently located at Merlin House, 6 Bolstro Road, Haywards Heath, West Sussex, RH16 1BB clients are most welcome to visit our offices, or we are happy to arrange home visits if this is more suited to your needs.
Saturday morning appointments by arrangement.

Tel: 01444 411333

Website: www.sgallico.co.uk



Remembrance Sunday

Next month marks the opportunity to honour and pay respect to all those who have fought and lost their lives to enable us to live in freedom. With ongoing conflicts around the world, let's join with the Royal British Legion and other village groups on Remembrance Day.

The programme for the Parade will follow the pattern of previous years with the local youth organisations joining in and the Primary School children taking part in the Church service. The Branch Standards, members of the Lindfield Branch and members of the Womens' Section will 'Fall In' at the War Memorial at 2.45pm. The Boys' Brigade and the Lindfield Scouts and Guides will 'Form Up' behind the Branch members. Heidi Watkins from Newhaven will act as Bugler. The Branch Presidents will lay wreaths to honour 'The Fallen' and representatives of the local organisations will also lay wreaths to honour 'The Fallen'. Will those who wish to attend the Service assemble at All Saints Church at 2.40pm on 13th November. The Remembrance Day Tea will be arranged by the ladies at the King Edward Hall at approximately 4pm. Once again we emphasise that all members are welcome. So, if you are unable to attend the Church Service just come along to the Hall.

The Poppy Hop

In aid of the 'Battle Back' Campaign, the Lindfield Branch of The Royal British Legion are holding a special fundraising dance to celebrate the 90th anniversary of RBL. 'The Poppy Hop' will be held on 15th October in The King Edward Hall from 7.30 pm to 11.00 pm. It is to be a Fish and Chip Supper/Dance with the Perdido Players Swing Band. For more details see page 30.

Masters
& Son^{ESTD 1854}

Supporting & Caring Funeral Services

Masters House
Lewes Road, Lindfield
West Sussex RH16 2LE

01444 482107
l@masters@mastersandson.com
www.mastersandson.com





Lindfield Rural Parish Council Newsletter

Oct 2011

Millennium Village Centre, Lewes Road, Scaynes Hill, West Sussex RH17 7PG
Tel: 01444 831499 email: lindfieldrural.parishcouncil@virgin.net www.lindfieldrural-pc.org.uk

Well-being for council

Lindfield Rural Parish Council has resolved that it has met the eligibility criteria to exercise the Power of Well-Being. The Statutory Power of Well-Being empowers eligible councils to do anything considered likely to achieve the promotion or improvement of the economic, social or environmental well-being of their area.

The prescribed conditions for the use of the Power of Well-Being have now been satisfied. Council fulfils the requirements of the Parish Councils (Power to Promote Well-being) (Prescribed Conditions) order 2008 with a qualified Clerk, 100% vacancies on the council filled at the last ordinary elections and 100% Councillors trained.

Council adopted a Community Engagement Strategy, explaining how it will involve persons or organisations interested in the well-being of our area. The statement is published on the Council's website.

The eligibility period runs from the date of resolution by Council to use the Power, until the day before the next Annual Meeting held in the year of ordinary elections. (Ref: www.commuinities.gov.uk website : Power to promote wellbeing)

Council welcomes new clerk

Di Morgan joined Lindfield Rural Parish Council in July and will replace Karin Milne as Parish Clerk when she retires at the end of September. Karin will be staying on for the present as Responsible Finance Officer.

Di joins us from Action in Rural Sussex (AirS) where she was previously Quality and Training Manager. Although she is new to the technicalities of the role of Parish Clerk, she has been involved in HR support and training to local councils in Sussex and hopes that this good relationship will continue in the future.

Di lives in Haywards Heath with her husband Don and three Border Collies. She and Don enjoy singing together and perform at local folk clubs as a duo. A couple of years back they put together an anthology of song and readings on the subject of Sussex Shepherds which they performed in costume with an obligatory dog that stole the show! Di is also heavily involved with Border Collies in particular and dogs in general as she competes and judges as well as running the Dog Obedience Group with a partner in Portslade. Di has current experience

of working with, and serving on committees and knows only too well the difference that volunteers make to the community. She also enjoys helping people to develop their skills and knowledge both in a professional and voluntary role. She is looking forward to developing her own role at the Council and meeting local residents and organisations.

Anchor pond and the Farmers Inn

The Anchor Pond in Scaynes Hill has a long and interesting history. It used to provide water for the horses bringing carts up Anchor Hill. The "Anchor" referring to the anchor points that were used to stop carts running away down the hill.

A body was once found in the pond and never identified! This was a long time ago!! The pond is protected as it has newts in it! This presents certain challenges and ways to make it more attractive are being considered, whilst protecting the wildlife.

In the last month the hedge across the front of the pond has been cut back to its old height level with the fence. This has opened up the vista and view of the Farmers Inn. It is also all change at "The Farmers" as Mark has taken over the pub and refurbishment is in full swing. The Pub is to become "**The Inn on the Green**" and partly in response to the Village Plan, will have a coffee shop as well as a separate bar and restaurant. We all wish Mark and his family the very best of luck and a great welcome to the village.

Mobile Civic Amenity Collection

Lindfield Rural Parish Council are providing a refuse freighter for a free collection of household and garden waste on: Sunday 6th December 2011

Sunday 26th February 2012

At the North End, Scaynes Hill Common between 10am and midday. No trade or builders' waste will be accepted. Please do not leave rubbish in the absence of the refuse freighter. Thank you.

Your Parish Councillors:

John Dumbleton (Chair)
Sheila Hobbs (Vice Chair)
Brian Bunt
Chris Hersey
Margaret Hersey
Ray Jones (Newsletter Editor)

Tel: 482633
Tel: 483396
Tel: 484661
Tel: 482270
Tel: 482270
Tel: 453868

Steve Minter
Christopher Snowling
Steve Windsor
Parish Clerk: Karin Milne
Clerk Designate: Di Morgan
Assistant: Irene Nicholas

Tel: 831786
Tel: 482172
Tel: 484796
Tel: 831499
Tel: 831499
Tel: 831499

Lindfield Rural Parish Council Office is open to the Public on Tuesdays 12.30 to 13.30 and Thursdays 10.00 to 11.00

Voluntary Rangers

Would you like to contribute to improving standards in your local green space? Want to put something back into your local community? Fresh air and exercise in your local green space? If so, why not join the Voluntary Park Ranger Scheme, run by the Park Ranger Service, and help make a difference.

What is involved?

The role involves monitoring your local park or green-space whilst you continue to use the site as you would do at present (e.g. by walking your dog or through a Sports Club etc.).

We would ask you to act as our 'eyes and ears' by reporting incidents of litter, graffiti, vandalism, anti-social behaviour, dog fouling and byelaw offences.

All we ask is that you report these incidents to The Ranger Service, we do not expect Volunteers to tackle any issues on site. Voluntary Rangers should take no action that puts themselves or others at risk.

Some of our Volunteers choose to litter pick for us but there is no obligation to do this. If you do choose to litter pick, we provide gloves, litter pickers and a risk assessment for the activity.

How do I become a Volunteer Ranger?

Please contact the Ranger Service on 01444 477561 or email rangers@midSussex.gov.uk. We will arrange a Welcome Meeting with you and will give you all the information you need to be a Volunteer.

Once you are registered as a Volunteer, we will send you a twice-yearly newsletter and from time-to-time we may send relevant literature on the Parks Service and involve you in surveys and consultations. We will attempt to resolve all the issues you report to us, and may need to meet with you on site to discuss these.

For more information please contact us or download our Park Ranger leaflet.

Volunteer Walk Leaders

Another way to get involved with the parks service is to become a volunteer walk leader. It is a great way to get to know people in your local community, to help you stay fit and to help others get fit! For more information please visit the Healthy Walks Volunteer Leaders page or contact the Park Rangers on 01444 477561 or e-mail rangers@midSussex.gov.uk.

Practical Conservation

If you are interested in getting involved with the practical side of conservation, we have a number of volunteer groups operating in our Local Nature Reserves. It will keep you fit, enable you to make new friends and help you explore new areas of the beautiful Mid Sussex countryside while helping preserve these areas for future generations! Most groups meet once a month to carry out tasks such as path clearance, coppicing and removal of invasive species. All tools and training are provided.

To find out more please visit the Nature Conservation pages or contact the Park Rangers on 01444 477561 or email rangers@midSussex.gov.uk.

Council meetings

Oct 2011 - May 2012

- | | |
|-------------------|--|
| Mon 31 Oct 2011 | King Edward Hall, Lindfield |
| Mon 5 Dec 2011 | Scaynes Hill Millenium Village Centre |
| Mon 16 Jan 2012 | King Edward Hall, Lindfield |
| Mon 27 Feb 2012 | Scaynes Hill Millenium Village Centre |
| Mon 2 April 2012 | King Edward Hall, Lindfield |
| Mon 16 April 2012 | Annual Parish Meeting of Electorate
Scaynes Hill Millenium Village Centre |
| Mon 14 May 2012 | Annual Meeting of the Council
King Edward Hall, Lindfield |

HAYWARDS HEATH LIONS CLUB



JUMBLE SALE

**KING EDWARD HALL
LINDFIELD**

**SATURDAY
8th OCTOBER
at 12 (midday)**

Donations of jumble will be much appreciated on the day from 9am or for collection call 01273 890777 or email: jumble@haywardsheathlionsclub.org.uk

The musical production is presented in association with HOSBY ENTERTAINMENT LTD
as part of the HOSBY ENTERTAINMENT PRODUCTIONS OF NEW YORK

Tickets £13.00
Concessions £11.50
First Night Special
£11.00 at tickets
Group discounts available

GUYS AND DOLLS

Musical and lyrics by FRANK LOEWS
Book by JOSEPH KATZ and ABEL GERSHWIN

25th - 29th October 2011
7.30 pm
2.30 pm Saturday Matinee

Clair Hall, Haywards Heath

Online booking at: www.hhos.co.uk
Box Office: 01444 455440

The Witch Inn

Sunte Avenue
Lindfield
Haywards Heath
RH16 2AB
01444 414 504

Food served Wednesday to Saturday 12-2.30pm & 6-9pm,
Sundays & bank holiday Mondays 12-4pm
Bar open 7 days

We source fresh local produce from surrounding businesses
and suppliers to provide our customers with the best quality
seasonal menu

Our garden is the perfect setting for a family lunch or an after-
noon drink, while our restaurant offers a relaxed environment to
enjoy our a la Carte menu.

www.thewitchlindfield.co.uk





Summer Reflections

ART AT FIVE

After the success of last year's exhibition and feedback from readers who visited the gallery, we are pleased to bring you news of the latest 'Art at Five' exhibition.

Art at Five celebrates its eighth anniversary this October with an exhibition by three acclaimed Brighton artists. 'Summer Reflections' runs from the 15th - 23rd October and showcases the recent works of Cecil Rice, Philippa Stanton and Louise Brooks.

Each artist takes a differing yet equally engaging approach to unravelling and interpreting our memories of summer. Whether capturing a moment, a mood, a sound or a feeling, each piece in this nostalgic collection is an intimate exploration of the senses, so entwined in our recollection of summer days.

Cecil Rice has used the Sussex coastal stretch as a source of much inspiration during the twenty years he has lived and painted in Brighton. Equally influential are his many visits to Venice where he fell in love with the distinctive character of the light that floods the city. Cecil's Venetian scenes take you to the waterways, bridges and piazzas of this enchanting place, while his depictions of London and Brighton leave you sentimentally drawn to the familiar panoramas. He teases out thoughts and memories of summer through romantic portrayals of the landscape and architecture, capturing the seasonal mood through a wet-on-wet watercolour technique. Cecil has exhibited at the Royal Academy, Cork Street, London and at the Institute of Watercolour Painters.

Philippa Stanton is a synaesthetic artist, the things she hears, touches, tastes and smells produce a corresponding visual response in colour, texture and shape. It is this response that Philippa puts onto canvas, asking her audience to consider their sensory experience of the world around them. Philippa's collection for this exhibition draws on her talents as a theatrical actress,

allowing her to use the canvas to perform a sensual journey of summers past. Her paintings promise to question, inspire and reignite your recollections of summer. Philippa's thought-provoking work has featured on *BBC Horizon* and *The One Show*, and her abilities were further explored through a body of work produced for the Shakespeare Globe Theatre.

Louise Brooks creates work that captures the light and shifting character of the coastline. As a Brighton-based artist she is constantly inspired by the ever-changing sea vistas, tidal patterns and unpredictable skies. Louise's shorelines and landscapes offer scenes for escapism, contemplation and sanctuary, recreating the peaceful haven of holidays past. Her training as a photographer gives her the ability to depict subtleties in light and this has become the very essence of her work on canvas. Her keen observations are realised through the use of pebbles, pearls, gold and silver leaf. Louise's new collection includes the radiance of Swarovski crystals, and a variety of gemstones carefully chosen for their colour and light diffusing qualities, as well as powers to elicit change and rebalancing. Louise has enjoyed a successful career as a professional photographer with work published in numerous magazines and has produced her own illustrated children's book.

The Gallery is set in the heart of the Lanes in Brighton, near the Pavillion and the Pier. It's easy to get to by bus or train.

Art at Five Gallery,
5 Bartholomews,
Brighton, BN1 1HG

t: 01273 774222
www.artatfive.com e: info@artatfive.com

Opening Times: Mon to Sat 10am-6pm Sun 11am-5pm

*Pain?

👉 Chiropractor

For the relief of

- Back and hip pain
- Elbow, wrist and hand pain
- Headaches and migraines
- Neck and shoulder pain
- Knee, ankle and foot pain

20 years experience,
including the Australian
Olympic Team and the
Australian Rugby Team

Free easy parking
Registered with all major
health insurers including
BUPA

Jennifer Layton
BSc GradDipChiro
Lindfield Chiropractic Centre
83 High Street, Lindfield
Sussex RH16 2HN

01444 484582

www.lindfieldchiro.co.uk

Sussex Homes & Gardens

Building & Landscaping Contractors-Lindfield

www.sussexhomesandgardens.co.uk



Extensions
Renovations
Landscaping
Alterations



Call : 01444 487646
07876 351983

Timber Structures

Are you ready for the DIGITAL SWITCHOVER?

- ▶ Satellite & Aerial Specialists
- ▶ Digital TV/FM/DAB Aerials
- ▶ Digital Aerial Upgrades
- ▶ Extra TV/FM/DAB/Telephone Points
- ▶ Realign & Reposition Services
- ▶ Plasma/LCD/LED Installations
- ▶ Multipoint Systems
- ▶ FREE Estimates

Freeview Have a digital TV and not receiving **FREEVIEW**? Time to upgrade your aerial? We offer a **FREE** survey



Over 140 TV & Radio Channels

freesat HD



NO MONTHLY SUBSCRIPTIONS

sky Approved Retailer & Installer

Sky + HD for new and existing customers

t: 01444 318650

NORSAT (Est 1992)

Your local Satellite Tv & Aerial Specialist

www.norsat.co.uk



10% OFF
any aerial work

upon presentation of this advert

DIGITAL Switchover Centre

AJ Mullen

**Bricklayer,
General Builder,
Extensions & Patios**

Tel: 01444 414657 Mobile: 07941 308966

Email: Mullenb04@aol.com 27 Hickmans Lane, Lindfield, West Sussex, RH16 2BN

Lindfield *Life*

Advertise to your
local audience
every month
from just £50+VAT

Book
before
8th
Oct

Call David on 01444 884115 or
email ads@lindfieldlife.co.uk
More info at www.lindfieldlife.co.uk



Image is everything

BUSINESS INSIGHT

What role is your image having in your business's fight against the gloomy financial climate? David Tingley, Creative Director of design agency Kipper, explores the possibilities.

It is, undoubtedly, a tough world out there at the moment for many businesses. With the constantly changing global forecasts and economic statistics buzzing around the media, it can be confusing and very daunting to consider the state and position of your business within the bigger picture.

However, sometimes it's the smaller picture that provides more clarity. The small picture is your business, and when you look very carefully at the things that are in your control it can become much easier to deal with.

The former Sector Skills Development Agency carried out research which showed businesses that don't invest in growth during a recession are 2.5 times more likely to fail than those that do. When times are tough it may be tempting to cut the marketing budget, but it seems that this approach is not always the best plan.

According to the Design Council "85% of rapidly growing businesses consider design to be integral or significant to their operations. Nearly two-thirds (59%) of UK businesses agree or strongly agree that there is clearly a positive link between investment in design and profitability."

So it seems that design is already contributing to the bottom line of many businesses. But how does it actually work? In a white paper published by the Design Council, Will Hutton described design as: "the bridge between the consumer questing for the experiential and the company trying to meet that appetite with an offer that presents the new in a user-friendly and innovative way."

If we take the example of the development of a new product, design can play a part in the initial market research, the physical product itself, identifying the best way to target the right audience, packaging the product and advertising to get the word out there when it is available. A Business Link article explains: "Successful

businesses include design as part of their business strategy from the outset because involving design at an early stage can save you money and result in a better experience for your customers."

At Kipper, one of the first things we do with new clients is to carry out a design audit. Put simply this is getting everything out on the boardroom table (flyers, website, product labels, business cards, adverts etc) and reviewing it together. Your customers will come into contact with your business through a variety of different avenues: they may see bus advertising, walk past your showroom or get a flyer through their door. All these 'touch points' should give a clear and consistent message. To continue our example; spending money on the design of your flyers may be wasted if your bus ads don't convey the same great impression. People may tune out if they can't see consistency of brand; they may even not link the two!

Sir Martin Sorrell (CEO of the world's biggest advertising agency WPP) recently made the following comment when talking about how business is dealing with the current global financial crisis: "Instead of investing in plant and equipment, companies are investing in brand and trying to build sales and market share."

But it's not just international businesses. Sussex-based security firm Beacon Services recorded a rise in new business conversion rate from 49% to 85% following a rebrand to reposition the company in their marketplace. Matthew Robinson at Beacon commented: "Kipper have been an invaluable partner throughout the whole design process and we are delighted with the results."

Design can play a key role in your businesses success and add value to the bottom line. If you are interested in having a free design audit for your company, call Kipper today on 01444 884115.



TAVISTOCK & SUMMERHILL
NURSERY & PREPARATORY SCHOOL

www.tavistockandsummerhill.co.uk



Because we all want the
best for our children...

COME AND SEE WHAT
MAKES US SPECIAL!

Autumn Open Days:
Friday 7th October – 2pm-5pm,
Saturday 8th October 2011 – 10am-12pm

See website for full schedule

Registered Charity No: 800886

Summerhill Lane, Lindfield, Haywards Heath RH16 1RP. Tel: 01444 450256

FREE DESIGN AUDIT FOR YOUR BUSINESS

We'd love to talk to you about your business, so call Kipper now on 01444 884115 to book a time to review all your marketing materials at no cost and with no commitment.



Kipper

Branding | Print | Digital | Interiors

01444 884115

www.kippercreative.com

What's on in October

AT KING EDWARD HALL & IN/AROUND LINDFIELD

- | | |
|--|---|
| <p>2nd Ruwach Christian Church – Morning and Evening Services (Ruth Hollis 459025)</p> <p>4th Mid Sussex Wine Society. Dark Star will be presenting a “Beer Tasting” Meeting and membership information from Angela Seward (01444 484447)</p> <p>6th Country Market (Sheila Hobbs 483396)</p> <p>8th Haywards Heath Lions Club – Jumble Sale (Amanda Dembrey 01273 890777)</p> <p>8th Lindfield NSPCC – Fundraising Quiz Night (Anna Kerr 01444 459944)</p> <p>9th Ruwach Christian Church – Morning and Evening Services</p> <p>12th Lindfield Horticultural Society – Evening with guest speaker (Alison Elliott 483039)</p> <p>13th Country Market</p> <p>15th Royal British Legion – Barn Dance (Jane 454846)</p> <p>16th Ruwach Christian Church – Morning and Evening Services</p> <p>19th Lindfield Preservation Society. An illustrated talk on ‘Sussex by the Sea’ by Mark Perry-Nash 8.00pm (John Chapman 484470)</p> <p>20th Country Market</p> <p>20th King Edward Hall Film Show Evening (Gillian Alderman 483181)</p> <p>21st Lindfield Crafts and Market (Beverley Smith 440274)</p> <p>27th Country Market</p> <p>27/29th Lindfield Dramatic Club – Annual Performance (Rex Cooper 831512)</p> | <p>11th Coffee Morning and Christmas Card Sale, Mid Sussex branch of the British Heart Foundation, 10am - 12.30am</p> <p>13th Cocktails, Cupcakes and Wine The Toll House. For more info pop into The Toll House.</p> <p>14th The World's Biggest Coffee Morning - Wine Evening. For info/ bookings: Victoria (487760)</p> <p>15th ‘The Poppy Hop’ Fish & Chip Supper and Dance with the Perido Players Swing Band, Tickets £12 Contact Pauline Parkyns (482672)</p> <p>TBC Pink Night Village Fashion Show King Edward Hall in aid of The Rocking Horse Appeal, Lindfield Primary School and other children's charities.</p> |
|--|---|

If you would like to hire the King Edward Hall please contact the Honorary Bookings Secretary for further information on telephone number 01444 483266 or by e-mail on bookings@kingedwardhall.org.uk



Haywards Heath Music Society
70th Season 2011-2012

NEXT CONCERT

22nd Oct 2011 **JOO CHO (soprano)**



Joo Cho trained in Korea and Italy, and comes to us as winner of the Haverhill Soloists Award. A recent review said, "Her ability to capture the essence of expression in moments of bliss, intimacy and beauty were phenomenal." She sings works by Mozart, Strauss, Wolf and others.

12th Nov 2011 **CARA BERRIDGE (cello)**
 18th Feb 2012 **JANET CANETTY-CLARKE***
 17th Mar 2012 **YOUNG MUSICIANS' SHOWCASE**
 14th Apr 2012 **RICHARD UTTLEY (piano)**
 5th May 2012 **THE ROSE TRIO**

All concerts are at 7.45 pm in St Wilfrid's Church, except *in Haywards Heath Methodist Church. If you enjoy concerts of live music, please consider becoming a member; our discount makes membership really worthwhile.
 Tickets £12, conc'ns £11, member's discount £3
 Family rate: 2 adults half price with under-18 (£3)
 For further information, telephone 01444-456227, or visit:
www.haywardsheathmusicsociety.org.uk

Our advertisers

CALL THEM!

Services

AJ Mullen (Builder) 27 01444 414657
Barratt Homes 31 01444 487712
www.barratthomes.co.uk
Belle Casa (Cleaning Service).....3.....0871 951 2345
www.bellecasa.co.uk
BSW (Building Services).....16.....01444 831138
www.bsw-bs.co.uk
Dean Ferguson (Electrician) 13 01825 723661
Expectation Landscapes 26 01444 413966
www.expectationlandscapes.co.uk
Field and Forrest (Delicatessen).....9.....01444 483700
www.fieldandforrest.com
Haywards Heath Lions Club.....24.....08458 335807
www.haywardsheathlionsclub.org.uk
Haywards Heath Operatic Society..24.....01444 455440
www.hhos.co.uk
Haywards Heath Music Society.....30.....01444 456227
www.haywardsheathmusicsociety.org.uk
Highley Manor Hotel 5 01444 811711
www.highleymanor.co.uk
HomeSmiths (Interior Design)..... 4 01444 440880
www.homesmiths.co.uk
Kipper (Creative design/ branding)..29....01444 884115
www.kippercreative.com
KPS Contractors 15 01444 831307
www.kps.uk.com
Lindfield Motors 6 01444 482988
www.lindfield-motors.co.uk
Lindfield Pest Control.....6.....01444 483137
Liz Hinze Singing Lessons.....18.....01444 452697
Lucy Locksmith..... 20 07780 840462
www.lucy-locksmith.co.uk
Masters and Sons..... 7 01444 482107
Mid Sussex Decorators..... 18 01273 841964
www.midsussexdecorators.co.uk
Mid Sussex Design.....19.....01444 414 442
www.midsussexdesign.co.uk
Norsat (TV) 27 01444 318089
www.norsat.co.uk
N.Whittaker (Landscaping/Paving)..20....01444 450 300
www.nwhittakerpaving.co.uk
Robinson Landscaping 9 01444 250000
Spink PR..... 15 01444 484888
www.spinkpr.com
Stephen Gallico Solicitors 21 01444 411333
www.sgallico.co.uk
Sussex Homes and Gardens.....26.....01444 487646
www.sussexhomesandgardens.co.uk
VDL Pet and Home Services.....14.....01444 210044
www.vdlpetandhomeservices.co.uk
Xpress Repair (Computer Repair)....2.....01444 474 474
www.xpressrepair.co.uk 01444 458 458

Health/Lifestyle

Jakki Todd (Beautician) 8 01444 487474
www.jakki.net
Lindfield Chiropractic Centre..... 26 01444 484582
www.lindfieldchiro.co.uk
Natural Therapy Rooms.....20.....01444 456699
www.naturaltherapyrooms.co.uk
Phoenix Performance Centre 17 07771 813235
www.phoenixperformancecentre.co.uk
Rosemary Conley Diet & Fitness 5.....01293 408730
www.rosemaryconley.com

Out & About

The Toll House.....19.....01444 482200
www.thetollhouse.co.uk
The Witch Inn.....24.....01444 414 504

Leisure

Lindfield Art Studio 13 07738 288730
www.leesalemay.co.uk

Education/Childcare

Magikats (Maths/English Tuition) ... 13.... 01273 473757
www.magikats.co.uk
Tavistock & Summerhill School.....29.....01444 450256
www.tavistockandsummerhill.co.uk

Lindfield Life

Shop local
Shopping
starts here

Call David on 01444 884115 or
email ads@lindfieldlife.co.uk
More info at www.lindfieldlife.co.uk

STOP STALLING START OWNING



The Argyll
1 bedroom apartment

WORKED EXAMPLE BASED ON
A £194,995 PURCHASE PRICE:

You arrange mortgage (7.6%)	£148,714
Deposit (4%)	£7,800
We arrange equity loan (20%)	£38,000
Total purchase price	£194,995



The Limes, Newtown Road, Lindfield, Haywards Heath RH16 2NB
Marketing suite and show home open daily 10am - 5.30pm

You could get on the property ladder now with FirstBuy*

The Government-backed 4% deposit scheme
is available now.

FirstBuy* is a great opportunity to buy a new home now.

We will help you to secure a 20% equity loan which means you may only require a deposit as low as £8,320. You will pay no interest for the first 5 years on your 20% loan if you do not sell or transfer your property during that time or in other specific circumstances.

Also available

- 3 bedroom homes from £249,995
- 3 bedroom homes from £294,995
- 4 bedroom homes from £372,995

YOUR HOME MAY BE REPOSSESSED IF YOU DO NOT KEEP UP REPAYMENTS ON A MORTGAGE OR ANY OTHER DEBT SECURED ON IT.

barratthomes.co.uk
or call **01444 482332**

FIND
THE
ONE

BARRATT
HOMES



*Subject to status, terms and conditions apply. Scheme cannot be used in conjunction with any other Barratt offer. See www.barratthomes.co.uk for full details. BOW Trading Limited (company number 03018173) whose registered office address is Barratt House, Carbrigg Way, Forest Business Park, Barton Hill, Coalville, Leicestershire LE67 1JF ("BOW") BOW is a subsidiary of Barratt Developments PLC. BOW together with the Homes and Communities Agency ("HCA") provide an equity loan for 20% of the purchase price of the property. The equity loans provided by BOW and the HCA are secured as second and third charges on your property which rank equally against it. The amount you have to repay to BOW and the HCA may be more than the amount of the equity loan provided. Selected plots only. Mortgage lenders security requirements may vary. Images typical of Barratt Homes. Prices correct at time of going to press.