

Lindfield *Life*

Inc. Scaynes Hill & Walstead

Local village talk,
by the village

May 2018 Issue #112

Free

Check out the Spring Show

page 12

Hopes for new graveyard path

page 27

Behind the Counter: Paul's

page 32



RENAISSANCE · RETIREMENT ·

**SELLING
FAST!**

**80%
SOLD**



FLOOR SPACES UP TO 1,625 SQ FT

RETHINK YOUR EXPECTATIONS THE BIGGEST RETIREMENT APARTMENTS IN HAYWARDS HEATH

Renaissance Retirement is selling one and two bedroom superior retirement apartments in the heart of Haywards Heath, only a five minute walk from the town centre. The luxurious apartments provide an exceptional standard of independent living, some boasting stylish mezzanine galleries and en-suites, providing total floor spaces up to 1,625 sq ft!

Fleur-de-Lis Haywards Heath Offers The Following

- Large 1 & 2 bedroom apartments
- Dual level living spaces
- Secure on-site car parking
- Landscaped garden areas
- Concierge on-site Monday to Friday
- 24 hour emergency call system
- Guest Suite for visiting family and friends
- **Free** national moving service
- Owners' Drawing Room
- Central location close to amenities
- Lift to all floors
- Pre-installed security features



★ ★ ★ **LOWER PRICES ANNOUNCED FOR 2018** ★ ★ ★

1 Bedroom Second Floor
NOW £290,000

1 Bedroom First Floor
NOW £320,000

2 Bedroom &
Mezzanine Gallery
NOW £450,000

2 Bedroom, Dining Room
& Mezzanine Gallery
NOW £500,000

To Request A Brochure Or To View The Show Apartments

Phone: 01444 455699

Please Quote HAYAD18



Address: Fleur-de-Lis Haywards Heath, Bolnore Road, Haywards Heath, West Sussex, RH16 4WH

Email: haywardsheath@renaissanceregroup.co.uk / Visit: www.renaissanceregroup.co.uk

Renaissance Retirement: Compliant With The Consumer Code For New Homes

EDITORIAL

By David Tingley, Editor

Here it is, May already, and it seems it isn't only my wife who is getting out in the garden!



On **page 50** we see a couple of **Scaynes Hill residents** proudly showing off their **new allotments** and last month King Edward Hall was adorned with many wonderful things grown by the great and good of the village at the **Lindfield Horticultural Society Spring Show** - see **page 12**.

Elsewhere, it was a pleasure to return to my old school - **Oathall Community College** - as I got a tour of the soon to be opened new Science & Maths block. Please read **page 19** where we set out the plans from Oathall's PTA to raise extra cash to make this amazing new education facility even more special and see if you can help.

Joe Wayte spent time with High Street greengrocer **Paul Bignall** and **page 32** tells his story '**Behind the Counter**' - thanks Joe and Paul, and **Dale Reubin** for more excellent professional photos too!

On **page 37** we continue our **remembrance** of those 64 Lindfield men who died during WWI, whilst on **page 44** we share the story of **Will Bennett**, the son of a former Lindfield village policeman, who's friends are rallying to help him regain some mobility after an horrific accident.

Resident and **recycling guru Colin McFarlin** is back with a new column on **page 52** - where we lift the [bin] lid on what's recyclable and what's not!

And lastly, as the May Bank Holiday approaches I would like to make a personal plea to ask if anyone is available to help at either of the **community events**, the **Village Run** on 28th May or **Village Day** on 2nd June. Whilst our team can plan and make it happen, we always **need a bit more people-power** on the day so do please email run@kingedwardhall.org.uk or villageday@kingedwardhall.org.uk to find out more. Thanks!

Issue # 112 - May 2018 -
4,600 copies printed

Next magazine copydate:
8th May 2018

Next magazine published:
22nd May 2018

Lindfield Life

The Barn, Hurstwood Grange,
Haywards Heath RH17 7QX

Telephone 01444 884115
www.lindfieldlife.co.uk

Editor: David Tingley
Assistant: Claire Cooper
editor@lindfieldlife.co.uk
Advertising: Emily Billson
ads@lindfieldlife.co.uk

Disclaimer: The opinions expressed within the magazine are of the individual authors and not necessarily those of the editors. Whilst the editors welcome contributions & photographs, this is on the understanding that there is no obligation to include them and that the item may be edited & that there is no breach of copyright. Neither the editors nor the publisher accept any liability in respect of the content of any article, photo or advertisement.

Lindfield Life Published by Kipper



David Tingley
Looking across Lindfield
Common

Come and see us today at...

| | | | |
|------------------------------|--------------------------------|-------------------------------|---------------------------|
| Lindfield Lodge Lindfield | Barn Cottage Haywards Heath | West End Farm Burgess Hill | Kidz Academy Cuckfield |
|------------------------------|--------------------------------|-------------------------------|---------------------------|

grass cutting
lawncare
hedgeworks
tidy up, pruning
leaf clearance
garden maintenance
patio cleaning
fencework
gutter clearance
reasonable rates
reliable service

call Chris for a FREE QUOTE
0800 014 2420
email: cj.tinsley@nicenstripy.com
www.nicenstripy.com

nicenstripy
grasscutting & more

NEWS

We love to hear from groups, organisations and individuals about what's happening locally. Include a photo if you can. Email your stories to editor@lindfieldlife.co.uk



Garden designer picks up gold award

Lindfield garden designer Heather Martin is celebrating after winning a prestigious landscape award.

Heather received a Gold Award from the Association of Professional Landscapers for a garden recently built to her landscape designs.

The pocket sized Lindfield garden was built by local landscaping contractor Conquest Creative Spaces. Heather's design provided the clients with an attractive low-maintenance space for entertaining, to enjoy with their family throughout the year, all built to a very high standard. The judges described the garden as 'a very competent scheme'.

Photo: Garden Designer Heather Martin with landscaping contractor Ross Conquest at the APL Awards 2018



Premises For Hire

Meeting room, school hall and field - available for weekend, evening and holiday hire (selected times only).

For further details please contact the Business Manager on 01444 454866 or email office@blackthornsprimaryacademy.org.uk



Hold the date!

Saturday 9th June

2.00 – 4.00

Compton House Nursing Home

**Open Garden
&
Art Exhibition**

**plus games, competitions
and activities for all ages!**

Cake and refreshments will also be served



Compton House, 40 Compton Road Lindfield RH16 2JZ
www.lcch.co.uk

Academy wins national award for performance

Blackthorns Community Primary Academy has been recognised nationally for its excellent results in 2017 based on data from the Department of Education and Ofsted, analysed by SSAT (the Schools, Students and Teachers network).

One of the 15 academies in the University of Brighton Academies Trust, Blackthorns Community Primary Academy was found to be among the best performing primary schools in the country, and has enabled pupils' attainment at the 'expected' and 'higher' standard at Key Stage 2 in Reading, Writing and Maths to be in the top 20% of all schools nationally.

The SSAT Educational Outcomes database compares all state-funded schools in England. Blackthorns Community Primary Academy will be presented with its SSAT Educational Outcomes Award during the summer term at a ceremony attended by winners from across the region.

Marianne Brand, Principal of Blackthorns said: "We focus on each individual child so that they can achieve their potential and that all their strengths are identified and valued. Receiving this award acknowledges that commitment, as we strive to give our children the skills to be motivated and independent learners throughout their lives."



Sue Williamson, Chief Executive of SSAT said: "I am delighted that Blackthorns Community Primary Academy has won an Educational Outcomes Award for Children's Attainment - top 20%. This award recognises an important aspect of the school's work, but, as we know, there is much more to recognise in a good school like Blackthorns Community Primary Academy. SSAT is pleased to recognise

the quality of leadership and the hard work of all staff to ensure the success of every child. A big thank you and well done to pupils, parents, staff and governors."



**ROHAN
SOLICITORS**

Bright ideas for your business..?

Our commercial department can help
you make the right choices

01444 450 901

www.rohansolicitors.co.uk

Oathall pupils scoop Mid Sussex STEM prize

A team of talented young entrepreneurs from Oathall Community College emerged triumphant from the Dragon's Den after winning a prestigious design competition.

The team impressed judges at this year's Mid Sussex STEM (science, technology, engineering and maths) challenge final scooping the winner's trophy after competing against teams from Warden Park Academy and St Paul's Catholic College.

The teams were tasked with showing off their project management, marketing and engineering skills to create and then market an electric bike from a component kit and a mountain bike.

The teams were assessed by a panel of judges, including engineering and medical employers, before two were shortlisted to go before the Dragons.

The final judging panel of Deputy Lieutenant Carole Hayward, Rhiannon Scott of Women in Engineering and Cllr Garry Wall, Leader of MSDC were joined by the Rt Hon Sir Nicholas Soames MP to sit as Dragons as the two shortlisted finalists, both from Oathall Community College, pitched their ideas and answered questions during their Dragons' Den style presentation.

In a very close run race, the Oathall students were announced as winners collecting the challenge trophy and an invitation to the world famous electric bike company Bromptons.



C&G Plumbers
Your local plumbing experts

- ✓ Emergency repairs
- ✓ Fast response
- ✓ Central Heating
- ✓ Shower cubicles
- ✓ New bathrooms
- ✓ Outside & Kitchen taps
- ✓ Available 24 hours

Godfrey
Mobile: 07833 726 411

T: 01444 454 969
E: candgplumbers@gmail.com
W: www.candgplumbers.co.uk

OAP discount






**Call Godfrey now on: 01444 454 969
or 07833 726 411**

www.candgplumbers.co.uk

Cheekatrade.com

Rated People.com



**Swimming lessons
Saturday mornings**

**Come to this highly
recommended swim school**

Lessons from 3 years upwards
Tiddlers, Beginners, Improvers
and Stamina

**LIMITED
SPACES
AVAILABLE
NOW**

First trial lesson FREE

Fully qualified ASA teachers
EST. OVER 20 YRS AT ARDINGLY COLLEGE

For more information or to book your
FREE trial call Jackie on 01825 791782

www.ardinglytrainingcentre.co.uk





First month half price

Introductory YOGA offer, explore our new YOGA classes now for **HALF PRICE***

- Atmospheric Yoga studio
- Different styles of yoga (vinyasa, restorative, yin/yang)
- Personal Yoga classes
- Special Yoga Events
- 5 mins from Lindfield
- 5 minutes from HH Station
- Free parking
- No contract | No joining fee
- Flexible membership

Sign up before the 31st May 2018. Call Sarah on 01444 473421 or email: sarah@linearfitness.com

*** OFFER VALID FOR ALL OUR CLASSES:
PILATES | YOGA | CARDIO 30 | LBT | INDOOR CYCLING
CONDITIONING | KETTLEBELLS | BOOTCAMPS
RUNNING CLUB | BOXING CIRCUITS**

LINEAR
HEALTH & FITNESS



Terms & Conditions apply

LINDFIELD PRIMARY

Having enjoyed the Easter break we are full steam ahead with summer term learning and fun. But here are some more of the activities our children enjoyed in the spring.



Year 4 experienced an amazing day of hands-on science and discovery at The Observatory Science Centre at Herstmonceux. Amongst the domes and telescopes of the observatory, the children enjoyed investigating the many interactive exhibits, marvelled at the magnitude of the telescopes, explored the captivating Discovery Park and tried out their teamwork by building a truss bridge. The children completed their transformation into scientists by taking part in an explosive science show. Once again the children were wonderful ambassadors.

Lindfield really got behind Sport Relief this year by raising money and getting active. The children enjoyed running a mile a day, every day during Sport Relief week. As a school we ran over 2,500 miles and took 5 million steps!

Our Year 5 poets came a close second in the annual locality schools performance poetry competition, which Lindfield hosted this year. Martha, Millie, Scarlett, Isla and Leo performed 'Gran Can You Rap' by Jack Ousby. They were judged on their intonation, fluency, synchronisation, actions, enthusiasm and volume, scoring highly in all six areas.

Early Years parents have generously donated bird food, feeders and boxes, as well as soil and pots for fruit trees. The EY outside area is now developing into a colourful nature zone, with a colourful spring bulb display.

Year 2 children enjoyed a visit from the Jaws'n'Claws animal handling workshop to support their curriculum learning. They met snakes, lizards, spiders, tortoises and a giant snail and thoroughly enjoyed learning lots of amazing animal facts.

Children took part in a whole host of locality sporting competitions throughout March, including the annual Mid Sussex Active netball tournaments, Haywards Heath netball league; indoor cricket league; quicksticks hockey tournament and the 2018 National Primary School Relay Swimming Competition, organised by the English Schools Swimming Association (ESSA) in Horsham.

Swan Press Printers



For your Personal & Business Print

- Stationery
- Flyers - Leaflets
- Brochures
- Magazines - Newsletters
- Folders
- Posters
- Office/Seminar Documents - Wiro Bound

And anything else in between...

We meet your deadlines and budgets with a personal service.

Delivery FOC

Phone for free estimate

☎ 01273 467346

@ claire@swanpress.co.uk

🌐 www.swanpress.co.uk

Are your locks giving you a headache?

Do you get stressed when they're not working as they should?

Are your keys testing your patience?

It could take just one application of **Lock Assist** to give fast acting, long term relief from all your security headaches.

Cures sticking locks, catchy keys and difficult doors.



Call us now to make an appointment on 01444 244 344



help@
lockassist.co.uk



Lindfield achieves Fairtrade status

Lindfield is now officially a Fairtrade Village. Following a two-year-long process, Lindfield has been awarded this status for its commitment to Fairtrade principles.

As part of the application, several village shops and cafés pledged to sell Fairtrade and fairly traded products. Support was also given by Lindfield Parish Council, churches and voluntary groups.

Val Upton, Vice-Chairman of Lindfield Parish Council, said: "Lindfield Parish Council is pleased that the village has obtained Fairtrade status. Fairtrade is important as it changes the way trade works through better prices, decent working conditions and a fair deal for farmers and workers in developing countries."

The attraction of Fairtrade to local people is that it is an active and practical way that they can support small-scale farmers ensuring they earn decent incomes and have long-term contracts with companies. In addition, they earn the Fairtrade Premium, which they invest in vital business, social and environmental projects.

The Fairtrade mark can be found on over 5,000 products globally, including flowers, rice and cocoa. Chris Lee, member of the Fairtrade Lindfield Steering Group says: "When you are doing your weekly shop,

maybe look out for the Fairtrade logo and make a difference to someone's life. For example, by buying Fairtrade chocolate, you can enjoy the taste and know you are helping people in Ghana to send their children to school."

Adam Gardner, Communities Campaigns Manager at the Fairtrade Foundation, said: "We are delighted to welcome Lindfield to the Fairtrade movement which now boasts more than 1,900 communities worldwide, taking practical steps to making a fairer world trade system a reality. Thanks to the support of consumers, an increasing number of farmers in developing countries are now selling their products on Fairtrade terms, bringing them a stable income and the chance to trade their way out of poverty. Today, more than 1.6 million farmers and workers across 74 developing countries benefit from the international Fairtrade system, but there is still a long way to go."

On Village Day (on 2nd June this year) Fairtrade Lindfield will have a stall selling a variety of Fairtrade and fairly traded products.

For more information visit www.fairtrade.org.uk

Meet John, your local tiler..

Hi, I'm John. I do tiling all around Lindfield! Talk to me about any tiling work - bathrooms, kitchens, conservatories, hallways... in fact anything you want tiled! I also do kitchen and bathroom refits too! I'm happy to give free advice and estimates for the work. I have years of experience, so just ask and I'll show you references from other happy customers.

Call John on 07967 344460

Specialist in Natural Stone & Mosaics jms4tiling@gmail.com



Been thinking about writing your Will?

**Do it now, and get 20% off
with Claire Nash Solicitors**

**Mention
Lindfield Life
and get
20% off!**
Single Will £120+VAT, was £150+VAT*

**Caring and
professional
advice
when you need
it the most...**

- Probate
- Wills
- Lasting Powers of Attorney
- Equity release
- Matrimonial



Claire Nash is a local solicitor providing expert and friendly advice to residents of Lindfield and across West Sussex.

Claire will visit you at a time that suits you: in the office, or at home, including out of hours.

Call: 01444 417944
www.clairenashsolicitors.co.uk
info@clairenashsolicitors.co.uk

*Offer applies to Will writing only, ends 31st May 2018

**Call Claire today for your free
and confidential initial consultation
on 01444 417944**



Claire Nash Solicitors is the trading name of Claire Nash Solicitors Ltd. Company Number 10958514. Claire Nash Solicitors Ltd is regulated by the SRA in England and Wales (SRA number 643261). VAT Number 285 1524 95. Registered Address: Summer Cottage, Blackness Road, Crowborough TN6 2NA.

Week of prayer at St Augustine's Church

By Canon Lisa Barnett

'Non-believers turn to prayer in a crisis, poll finds' ran the headline in the Guardian in January. The article continued: 'Just over half of all adults in the UK pray, and they are increasingly likely to call on God while engaged in activities such as cooking or exercising, according to the poll. Although one in three people pray in a place of worship and a third pray before going to sleep or on waking, others combine prayer with daily activities. One in five pray while doing household chores or cooking, 15% pray while travelling, and 12% pray during exercise or other leisure pursuits'.

Just last week, a friend who wouldn't consider herself a Christian, sent me an anxious text saying that her sister was seriously ill in hospital and asking me to pray. I have learnt, as a Vicar, that even after someone has told me that they don't believe in God, they are still pleased when I say that I'll pray for them.

There is something about prayer that seems to invite us, and draw us, whether it's in a moment of crisis or in a moment of beauty, whether it's last thing at night, or sitting alone in a peaceful church. Though we may not know who or what we're praying to, still we find ourselves praying.

St Augustine's Church, in Scaynes Hill, is always open during daylight hours and we know that many people from the local community value taking a quiet moment to pop in and enjoy the stillness, and perhaps take some time to pray.

We're going to be holding a special Week of Prayer in St Augustine's between Sunday 13th and Sunday 20th May. The church will be full of interactive displays, inspired by the theme, 'Streams of Living Water' and inviting us to explore praying in different ways. All are welcome to pop in between 9am-7pm each day, or to join us in our short led prayer times at midday or at 7pm.

More information from Canon Lisa Barnett – 01444 831827 or revlisa@btinternet.com

MagiKats made learning fun and now I'm top of the class!

Lucy, aged 10



MagiKats Maths & English Tutoring

Out of school tuition for pre-school to GCSE, enabling students to achieve their full potential

MagiKats Haywards Heath and Lindfield

Call: 01273 473757

Email: julie.s@magikats.co.uk



Learning Without Limits magikats.co.uk



HAVE YOU VISITED THE Art Studio?

The Studio offers a friendly environment with a full programme of regular adult and children's classes in a range of arts practices.

For more information email art@lindfieldartstudio.co.uk today or visit: www.lindfieldartstudio.co.uk

ART PARTIES
ADULT COURSES
HOLIDAY ART CLUBS
1-2-1 TUTORING
SCHOLARSHIPS
GIFT DAYS
AFTER SCHOOL
ART CLUBS

Gift Vouchers Available





Annual spring show blossoms

LINDFIELD HORTICULTURAL SOCIETY

By Claire Cooper

A host of golden daffodils filled the King Edward Hall last month when the Lindfield Horticultural Society held its annual Spring Show.

The stunning display of spring blooms was the centrepiece of a successful show which attracted 290 entries with exhibits ranging from flowers and fruit to crafts and cakes.

"The judges were extremely impressed, particularly as the recent weather has been challenging for growers," said show secretary Deborah Novotny. She added that although the poor weather had resulted in a lack of vegetable entries, the daffodils had blossomed right on time.

There were also plenty of entries in the photography, floral art, craft and cookery classes, with new members taking some of the top prizes.

They included Anne Lord who scooped first prize in the cookery section with her first attempt at making cheese straws.

Anne, who only joined the society two months ago put her success down to her mum's Be-ro cookbook. "The book is around 50 years old, but the cheese straw recipe has clearly stood the test of time," said Anne, who also won second prize for her marmalade and third for her millionaire's shortbread, cupcakes and flan.

"I'd encourage everyone to have a go. You never know what you might win!" added Anne.

In the children's classes brother and sister Seb and Abigail Clarke won first and second prizes for their flower arrangements, with Seb, aged just 3, going on to become one of the youngest winners of the junior cup. The Keiron James Toy Shield for the most points in the junior section, went to Florence Fearn-Hughes.

In the adult classes Tim Richardson had a successful day taking home three trophies for daffodils, leeks and photography.

There was however, one disappointment for the show organisers. The Novice imposed flower arrangement class designed specifically for newcomers didn't attract a single entry.

"We introduced the class as an opportunity for people with no experience of flower arranging to have a go, and hoped it would be popular addition to the show," said Deborah. "It's disappointing but we will keep looking for new ways to encourage new exhibitors."

Lindfield Horticultural Society always welcomes new members, particularly those willing to join the committee and is currently looking for a treasurer and secretary. Benefits of joining the horticultural society include opportunities to pick up tips and advice from expert guest speakers, outings to famous gardens and places of interest and access to the Sundries Centre where members can buy a range of gardening products at very competitive prices.

For more information visit the website www.lindfieldhorts.org.uk

Cups and trophies:

Fisk Cup – Richard Hilson

Lea Cup – Tim Richardson

Jeeves Cup – Tim Richardson

Daffodil Cup – Pauline Parkyns, Jocasta Fearn

Evelyn Drew Floral Art Cup – Clare Wilson

Dawson Cup – Debbie Ancombe

George Murrell Photographic Cup – Tim Richardson

Kieron James Toys Shield – Florence Fearn-Hughes

Lindfield Horticultural Society Junior Cup – Seb Clarke



Festival signs up world-renowned cake sculptor



Local resident and world-renowned cake sculptor Michelle Wibowo will be exhibiting one of her extraordinary cakes during the Lindfield Arts Festival.

Organisers are inviting other local cake makers that are keen to share both their passion for the village and baking to take part in

what promises to be a spectacular line-up.

The theme of 'My Lindfield' can be interpreted in any way, whether through history, sport, community, activity or architecture or perhaps something more abstract.

Claire Fuller, co-founder of the Arts Festival and keen baker herself, says: "We want to create an exhibition of exciting and extravagant cakes symbolising in some way what the village means to the particular baker. We are looking for professional and amateur bakers to take part in what we hope will be a fabulous and memorable element to the festival."



The cakes will be exhibited in the Kitchen People Shop on the High Street for everyone to come and see, but not taste!

Register on the festival website at: <http://2018.lindfieldartsfestival.com/be-involved> and check out more of Michelle's amazing work at www.michellesugarart.co.uk

10% Off any service with this advert



EXTENSIONS
DRIVEWAYS
ROOFING

Free Quotations

All aspects of construction, driveway, patio and roofing work undertaken

Over 20 years experience

Local, Friendly, Professional, Competitive, Trustworthy,
Reliable, Competent, Fully Insured.

Phone: 01273 799503

Email: info@extensionsdrivewaysroofing.co.uk
www.extensionsdrivewaysroofing.co.uk

44
HIGH
STREET

PAUL'S

01444
483307

VEGETABLE BOXES (PLASTIC FREE) DELIVERED TO YOUR DOOR



Due to an increase in people asking for plastic free, locally sourced and seasonal fresh produce delivered to their door - I am pleased to offer this service.

Free delivery to Lindfield residents on Wednesdays.

For more details of the box options pop into the shop, call 01444 483307 or email: paulbignall@live.co.uk



BOX 1: £12.50



BOX 2: £12.50

Mention Lindfield Life



The perfect finishing touch

OPEN FOR BUSINESS

What do you do when you need to accessorise a dress for a special occasion? This was the quandary that Abi Gurney used to have on a regular basis. "Having an amazing hat is a fabulous feeling," she comments, "but a great hat attracts attention – and then you feel you can't wear it again!" She soon realised that hiring one was the best solution, but she had to travel a great distance to do so.

The rest, as they say, is history as Abi started her own hat hire business right here in Sussex four years ago.

"I have always loved hats," Abi explained, "from the first wedding I ever went to. When I began to attend Ascot the need to impress became amplified and wearing a hat was an excellent way to make a statement. If others are admiring your hat, they won't remember that you wore the same dress two years ago!"

Abi has a huge selection to choose from at her showroom at Trading Boundaries in Sheffield Park – just 13 minutes from Lindfield. The business has recently moved to the shopping complex, into a beautiful unit which is packed with over 350 hats and a private changing area so that customers can bring their outfits and try on a selection of hats.

"It's always about choice," Abi explains, "so I work hard to ensure that I have plenty of stock and that this year's trends are included." Abi has added over 40 new styles for this season alone – selecting beautiful handmade pieces from many British milliners including well-known names like Rosie Olivia, Juliette Botterill and Vivien Sheriff.



"If they are admiring your hat, they won't remember that you wore the same dress two years ago!"

You could say Abi is passionate about her work: "I'm like a child in a sweet shop when new stock arrives," the former interior designer said. "Every piece is different; I love helping my clients and changing the minds of those that claim they 'can't wear hats'."

Customers come from all over Sussex but also Surrey and Kent too. "I am a convert, thank you Abi," explained Louisa – a customer. "I have finally disposed of all my ancient and out of date hats. You always make me feel so welcome, never rushed, and confident in what you have helped me to choose from your amazing selection. And I always receive the most amazing compliments when wearing them."

So, if you find yourself needing a hat to turn heads you know who to call. Whether its Royal Ascot,

Glorious Goodwood, a wedding or a funeral – Abi has styles to suit all occasions. Appointments at Abi Gurney Hat Hire are always by prior arrangement to ensure there's plenty of time find the right one, so speak to Abi on 01825 713448 or 07778 441518.



SIXPHYSIO – Open 6 days a week. Conveniently located for you right here in Lindfield.

- Physiotherapy
- Pilates classes on 6 days, offering both mat, equipment and 1:1
- Sports & Holistic Massage
- Yoga Therapy

BUPA registered for
Physiotherapy appointments.

To book, contact us today:
T. 01444 587587
E. lindfield@sixphysio.com

Physio, massage, machine-based Pilates, plus a range of specialist services.

SIXPHYSIO
DON'T TREAT, CURE

Therapy with Ania

Warm Manner

Safe Environment

Evidenced Therapies

Long NHS Experience



Lindfield High St. at Abbott's Pharmacy

Call Ania on 01444 617 226

Or visit www.talkforchange.co.uk

HILARY MAY (DA HONS)

GARDEN DESIGNER



Design schemes/planting plans
to suit all gardens - large or small



*Bring your garden to life with
colour, form and fragrance*

Tel: 01444 414674

Email: maygardens@icloud.com

www.hilarymaygardens.co.uk

AJ Mullen

**Bricklayer,
General Builder,
Extensions & Patios**

Tel: 01444 414657 Mobile: 07941 308966
Email: Mullenb04@aol.com

www.AJMullenbuilder.co.uk
28 Finches Park Road, Lindfield, RH16 2DN

Take the stress of I.T. away Do you struggle with computers?



For all your PC, Mac, tablet & smartphone problems,
training, recovery & spring cleans.

*save this
number*

Email emma@theitgirl.co.uk or call her on 07938 838861

BJN ROOFING

Gladstone House, Gladstone Road,
Horsham RH12 2NN

**THE ROOFING SPECIALISTS
FOR SERVICE AND QUALITY**

*Members of the National Federation
of Roofing Contractors*

Members of the Competent Roofer Scheme

- ★ Free Estimates ★
- ★ CSCS Qualified Craftsmen ★
- ★ Specialist Service for older properties ★

Tel: (01403) 255155
Fax: (01403) 211794
info@bjnroofing.co.uk

Established since 1962



School to be 'place of excellence'

OATHALL COMMUNITY COLLEGE

Across the country, Parent Teacher Associations (PTAs) are hosting quiz nights, fairs and coffee mornings to raise money for schools. At Oathall Community College they have decided to try something different for their next fundraising project.

"We wanted to be a bit more ambitious this year," explains Karen Crockford, current Chair of Oathall Community College PTA. "We wanted to take advantage of the opportunity that having a new Science and Maths block provides and involve the local community in our fundraising through a crowdfunding campaign."

Oathall Community College has secured funding from West Sussex County Council to completely refurbish the Science and Mathematics block. It will see the dated 1970s building replaced with a modern, purpose-built resource housing eight maths classrooms and eight science labs including prep rooms and an IT suite.

The new space will also have many small improvements to make a big difference. Headteacher Edward Rodriguez led some members of the PTA on a tour of the site last month and explained: "Little things like the raising of the windowsill height in the labs just makes sense. Students can also walk right through the building now, which will vastly improve the flow at peak times."

The PTA hopes to raise £25,000 to equip the building with state of the art teaching resources. Karen said: "This is not about replacing test tubes, heat mats and calculators; it is about providing students at Oathall Community College with the latest technological advances and resources to bring science and maths alive in the classroom and inspire a love of the subjects."

Items to be purchased include digital microscopes, interactive anatomical models, a planetarium and a linear air trap.

Mr Rodriguez, who has been key in planning the space and specifying the new science labs, explained: "We have an opportunity to make this school a real centre for excellence. This extra equipment will enable students to try new experiments and, as a result, gain greater understanding of the subject."

Crowdfunding is an online platform for raising funds by asking a large number of people to each make a small donation. It enables not only those directly involved in a project to make a contribution, but also people in the wider community to support a worthwhile cause. Karen continued: "For instance, we are hoping that former pupils and their parents will want to give something back in this way."

For donors there are rewards on offer for their generosity including a public thank you on Facebook, your name entered onto a fabulous display of donors that will adorn the entrance wall, the possibility of having a plaque with your name on a microscope, the opportunity to attend the grand opening in September with a celebrity guest or even the chance to have a classroom named after you.

The crowdfunding campaign launches on Tuesday 22nd May and the team hopes to have raised the £25,000 by 22nd July 2018.

If you are interested in finding out more please email the PTA team at opta@oathall.org, visit the Oathall Community College PTA Facebook page or visit the crowdfunding page at www.crowdfunder.co.uk/oathall-pta which goes live on Tuesday 22nd May.



Scaynes Hill village Open Gardens next month

Eight Scaynes Hill gardens of different shapes, sizes and designs will be open to the public on 9th June.

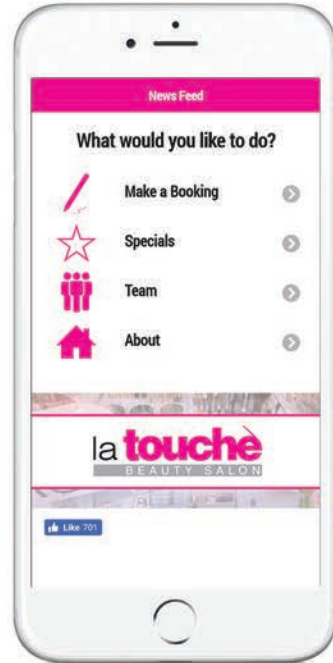
This year's Open Gardens event, from 1.30pm to 5.30pm, also includes the new Scaynes Hill allotments.

There is part access for wheelchairs in most gardens. All are welcome to go along to enjoy the gardens and help raise funds for two causes.

All proceeds from ticket sales will go to St Peter & St James Hospice. While home-made teas will be available in the St Augustine's Church Annexe with the proceeds going to a Family Support Charity.

Admission charge is £5 per adult – with no charge for children. Tickets and map from Scaynes Hill Church – Church Road, RH17 7NY, just off the A272 or from any of the gardens.

Introducing our brand new Salon App for iPhone and Android!



Browse our extensive treatment menu, take advantage of our monthly special offer and last minute promotions, book, reschedule and manage your appointments at a time convenient to you.

la touche
BEAUTY SALON

Award-winning salon of excellence
right here on Lindfield High Street

Call 01444 484600
39 High Street, Lindfield, RH16 2JH

Download App **FREE** from...



We CAN clean your oven!



CLEANERS SUSSEX.co.uk

we bring your oven back to new 📞 📅 📱

We clean single/double ovens, ranges, Aga's, microwaves, hobs & extractors.

Non-caustic cleaning method means no dangerous chemicals in your home.

Fully insured and highly reputable.

Call Alex on 07768 256747
or visit www.ovencleanerssussex.co.uk

Lindfield Garden Trail – could you help?

By Jim Stockwell

In June last year, ten owners across the village opened their gardens to the public to raise funds for St Peter & St James' Hospice. More than 600 visitors strolled around the beautiful gardens, talked to the gardeners, purchased plants and produce or just sat in the sun enjoying refreshments. In her letter of thanks Carol Hughes, Hospice Community Fundraiser, said: "The Hospice would like to thank the organisers, garden owners and visitors for all your donations to the Hospice. It is really amazing the amount of money you raised with a total of £5,990, it is simply fantastic. I hope you are justifiably proud."

We are planning to organise a similar event on Sunday 10th June this year. Success depends on having a range of interesting gardens to visit and we will have a few new ones as well as most of the favourites from 2017. So please put the date in your diary and help support this community event.



We are looking for volunteers to lend a hand on the afternoon for about 1½ hours by helping with sales of tickets and plants, and serving refreshments. We would also like to hear from other gardeners who might be interested in opening their garden, however small, for this worthy cause. To volunteer or find out more, please contact Jim Stockwell by email (jamesastockwell@aol.com) or call 01444 459363.

www.lindfield-gardens.co.uk



SCISSOR SISTERS
INTERIORS



Curtains, Blinds & Soft Furnishings
handmade in the heart of Sussex

Let Scissor Sisters bring our range of fabric books to your home and help you chose the perfect soft furnishings.

Find us on facebook
[scissorsistersinteriors](https://www.facebook.com/scissorsistersinteriors)

Call Melinda on 07816 179172
melinda@scissorsistersinteriors.co.uk
www.scissorsistersinteriors.co.uk

ODD JOB MAN

Friendly, Fair Priced Service, Any D.I.Y. or Home Improvements.
Ever just needed a Curtain Rail put up, or Shelf made or a Picture hung?

We offer an initial chat with Free Expert advice. so call us on:

07769 683614

Email:
warnerengineers@yahoo.co.uk



Career? Perfect parent? Both?

SOUND FAMILIAR?

- Career planning
- 1-2-1 coaching
- CV and online profile sessions
- Interview technique practise and feedback



Qualified coach
Ten yrs. leadership experience
Mum of two

Contact emily to arrange an initial free conversation
T: +44 (0)7970 724309 E: emily@emilyis.co.uk

emilyis.co.uk

Emily is

COACHING | CONSULTING | TRAINING

HANDMADE BESPOKE JEWELLERY BY

[rtf]



Engagement Rings
Wedding Bands
Fitted & Curve-to-fit Wedding Rings
Eternity Rings
Earrings & Pendants
Restorations
Alterations
Repairs

Call your local, award-winning goldsmith today on 01444 471380

RTFJ Handmade Bespoke Jewellery, 2 Morehouse Business Centre, Wivelsfield, West Sussex RH17 7RE www.RTFJ.co.uk



Lindfield Run: 28th May

Lindfield's annual Village Run takes place later this month and there are a few changes to note for regular attendees.

The 5k and 10k runs, a fundraising event for King Edward Hall, start from Hickmans Lane Playing Fields as usual - but numbers will be limited this year as the organising team seeks to keep the run at a manageable size. Booking online before 21st May is advisable.

Other changes include digital timing for runners and as a result, there will be a strict cut-off for collecting runner numbers at 10am on the day.

Runners registration is open from 8.30am on the morning of Bank Holiday Monday 28th May.

www.kingedwardhall.org.uk



Charity gets festival cheque

A Lindfield based charity has been awarded more than £3,000 following last year's Broadway Sound festival in Haywards Heath.

Group B Strep Support, which was started by Lindfield mum Jane Plumb, was chosen by MP Sir Nicholas Soames to benefit from the event, along with Time 4 Children.

Representatives from the charities were recently presented with cheques for £3,108.50 by Sir Nicholas Soames and Jon Ball, company director of Fairfax Properties which sponsored the Festival.

Jane Plumb MBE, Chief Executive & Founder of Group B Strep Support, said: "We are so grateful for Fairfax's incredible donation and would like to thank everyone involved. As an independent charity we receive no government funding, so rely on generous supporters like Fairfax to help us raise awareness, provide support for families affected by Group B Strep infection, and save little lives."

S P B

Plumbing & Heating Ltd

01444 483511
07798 636887

All plumbing & heating works
Full bathroom design & installation
Over 25 years local service



Vaillant Advance
Boiler
Installer



Grant G-One
Boiler
Installer

spb.plumbing.heating@hotmail.co.uk

74 High Street, Lindfield



SOWSussex
GARDEN CARE

All your garden needs

We offer all the usual things you'd expect from your gardener, like hedge trimming, lawn care, weeding and pruning.

Or perhaps you have something more specific in mind, like building vegetable beds or compost bins, or making your garden look its best for property viewings.

01444 657140
info@sowsussex.com

Find out more at **sowsussex.com**



Some hope for college future

Sir Nicholas Soames welcomed Greg Clark, Secretary of State for Business, Energy and Industrial Strategy, to Mid Sussex last month in a bid to try to get the Harlands Road campus reopened as a sixth-form college for the area.

The Secretary of State visited the campus in Haywards Heath. This former Central Sussex College site was closed last year, despite being significantly refurbished in 2011.

Sir Nicholas, the District and County Councils and the Local Enterprise Partnership are working together to try to build consensus locally to bring the site back into educational use.

Councillor Garry Wall, Leader of Mid Sussex District Council, said: "Sir Nicholas has been working very hard within Government to reopen the Harlands Road site.

"Mid Sussex is going to grow hugely over the next 10 years and must have its own college. There is a great opportunity here if we can just cut through the red tape."

Get involved in Lindfield Village Day this year

Village Day takes place this year on Saturday 2nd June with a grand procession down the High Street and stalls and fun/games on the Common during the afternoon.

Promotional programmes for the event will be on sale from door-to-door sellers and High Street shops during May.

The theme to this year's day is 'ruby' in celebration of it being the 40th Village Day, started, as it was, to raise funds for King Edward Hall - a registered charity.

The organising team is still after the last few volunteers - so the organisers would love to hear from anyone who can spare an hour or so on the day. This could be setting up in the morning on the Common, wearing a hi-vis jacket and marshalling a road closure on the High Street during the procession or afterwards, as a small army gets to work after 5pm, ensuring the Common is left in a good state when the crowds have gone home.

If you can spare any time to support this community event please email villageday@kingedwardhall.org.uk as soon as possible.



Your Feet in Caring Hands.

Painful feet? Embarrassing feet? Difficult to reach feet?

Thorough, honest treatments for all foot conditions. Professional registered podiatrists (chiropodists).

01444 454944

feetbyflo.co.uk

enquires@feetbyflo.co.uk

70b High Street, Lindfield. RH16 2HL



Masters & Son

EST. 1854

Bespoke Pre-planned Funerals



Pre-planning your funeral with Masters & Son can provide peace of mind for you and your family. Let us help you make more informed choices with our specialist knowledge and expertise.

Our pre-paid funeral plans* offer many financial benefits and are truly personalised to your wishes.

Call us today for a no obligation discussion.

*In association with Perfect Choice

Masters House
Lewes Road, Lindfield
West Sussex RH16 2LE

01444 482107
mastersandson.com





QUALITY COMPOST PRODUCTS



GIVE YOUR GARDEN AN EXTRA BOOST

Produced locally in Sussex, KPS make organic fine compost and blended top soil from recycled green waste

MADE TO BRITISH STANDARDS
SOLD IN CUBIC METER BAGS OR LOOSE LOADS
DELIVERED TO YOUR DOOR

**Our range of
landscaping products:**

**FINE COMPOST • BLENDED TOP SOIL
WOODLAND MULCH • PINE BARK
MUSHROOM COMPOST**

Visit our website for more product information or give us a call

kps.uk.com

01444 831 010

AN ESTABLISHED FAMILY BUSINESS FOR OVER 40 YEARS



A footpath for Walstead Cemetery west side

By Colin Lucas

In late 2016 my father sadly passed away. Since then my family visits and tends his grave at the west side of Walstead Cemetery. As with the majority of later plots, this is at the bottom end of the cemetery and furthest from the parking area.

Two of our family have mobility issues. Due to the uneven nature and slope of the cemetery ground this requires the use of a wheelchair, and a strong able bodied person to ferry us to my fathers grave and back up to the parking area. This can be nerve wracking as we look out for potholes which could cause a mishap for the person in the wheelchair or the person pushing the wheelchair. In addition during the wet months the wheelchair is caked in mud and requires washing when we get home.

After speaking with Ian at Masters & Son Funeral Directors, he confirmed that people attending burial services have commented on access issues. In some cases those in wheelchairs or with mobility issues have had to stay at the top of the cemetery while the burial service takes place.

I will always remember the image of some of my relatives with mobility issues picking their way down to my father's burial plot to attend the ceremony, hoping they would not stumble and fall.

During 2017 provision for disabled access for the east side of the cemetery was addressed when a footpath was laid.

With this in mind I contacted Lindfield Rural Parish Council and asked members to consider laying a similar path for the west side of the cemetery as this would benefit wheelchair users and those with limited mobility.

At the February Parish Council meeting this request was rejected and it was unanimously agreed that no footpath would be created.

I wanted to raise awareness of this issue and have set up the petitions below in order to try and get Lindfield Rural Parish Council to reverse its decision.

A footpath from the top to the bottom of Walstead Cemetery West Side would benefit wheelchair users and those with limited mobility both now and in the future.

Paper petitions are available to sign at the following Lindfield locations:-

Flowercraft Florist, Lewes Road
Selbys Chemist, 33 High Street
Humphrey's Bakery, 65 High Street
The Bent Arms, 98 High Street

An online petition has also been set up:-
<https://you.38degrees.org.uk/petitions/a-footpath-for-disabled-access-to-walstead-cemetery-west-side-1>

Alternatively the following email address can be used to send comments to me:
walstead.cemeteryfootpath@gmail.com

Home-grown asparagus

SIMPLY GOOD FOOD



Asparagus and Penne Pasta (2)

Measure 2tbs olive oil, 2tsp white wine vinegar and 1tsp wholegrain mustard into a small bowl, whisk to combine and season to taste. Cook 150g penne pasta to packet directions. Cut 115g smoked back bacon into narrow strips. Trim 6 spring onions and slice off the woody ends of 225g English asparagus. Cut both into 5cm lengths. In a wok or large frypan cook the bacon until just crisp. Drain off any excess fat then stir in the onions and asparagus and cook, stirring, until just tender when pierced with a knife. Drain the pasta and add to the wok with the dressing. Gently combine and serve immediately topped with shaved Parmesan cheese.

New Seasons Potato Salad (serves 4-6)

Measure 2tbs olive oil, 1tbs white wine vinegar and 1tbs wholegrain mustard into a salad bowl. Whisk to combine and season to taste. Cook 750g tiny new English potatoes in salted water until just tender then thoroughly drain them – easiest if you return them to the pan and quickly shake over the heat to dry them. Immediately add them to the bowl and gently stir to coat them with the dressing. Leave at room temperature for about 1 hour to allow the hot potatoes to absorb the dressing. Whisk together 2 generous tablespoons each of mayonnaise and sour cream, add several finely chopped spring onions and lots of chopped chives and carefully stir into the potatoes. Serve at room temperature.

THE CLEANING SERVICE **BELLE CASA**

Beautiful Homes

We know how hard it can be to find a dependable and honest cleaner, which is where we can help.

We can offer you professional cleaning and ironing for a fully inclusive rate of only £11.75 per hour (minimum of 2 hours per week).

All of our cleaners are specially selected, and insured, and you will receive the same cleaner each week.

So, if you'd like to take the pressure off keeping up with your household chores, then call us today on:

01444 420042

(answerphone available outside office hours) or visit our website:

www.bellecasa.co.uk

A photograph of a garden path made of light-colored stone slabs. In the center of the path is a large, weathered ceramic vase. The path is surrounded by lush greenery, including purple flowers and various shrubs. The overall scene is bright and well-maintained.

heather martin
garden design

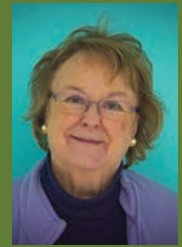
Heather offers a fully bespoke service for all styles & sizes of garden. From the initial design sketches to completed landscaping, planting & special finishing touches, she creates beautiful & functional outdoor spaces tailored to suit your lifestyle.

07738 323082
heather@heathermartin.co.uk
HeatherMartinGardenDesign

www.heathermartin.co.uk

By Caroline Young

We are rapidly coming to my favourite season of the year with regard to fresh fruit and vegetables. With our temperate climate we are lucky to be able to grow so many delicious salad ingredients, a wide variety of soft fruits and, my favourite of all, home grown asparagus! I personally think our tiny new potatoes from Cornwall and East Anglia have a better flavour than Jersey Royals – try them in this simple salad – delicious served with grilled salmon steaks.



Crunchy Broccoli Salad (serves 2)

Using a large salad bowl combine 125g crumbled Feta cheese, 4tbs mayonnaise, the finely grated rind of 1 lemon and 2tbs lemon juice, some crushed garlic and seasoning to taste. Drain and rinse 125g can chickpeas and stir in. Add 225g chopped raw broccoli florets, some finely sliced spring onions and some diced red pepper or cherry tomatoes. Gently toss with the dressing and serve at room temperature. Good with some crusty bread.

Cucumber Stirfry (2)

Trim a thin slice from the top and stem end of a cucumber then cut in half lengthwise and scoop out the seeds. Slice into 5cm chunks. Trim and slice a bunch of spring onions. Quickly brown 225g peeled and cooked prawns in a knob of butter, remove from the pan with a slotted spoon and keep hot. Pour 150ml hot vegetable stock into the pan, add the cucumber and cook over low heat for 3-4 min until the cucumber becomes translucent and the stock evaporates. Add the spring onions, prawns and a dash of sesame oil and cook for 2-3 min. Serve piping hot. Good topped with toasted sesame seeds for crunch.

Almond Cream Sundaes (serves 4)

Crush 8 Amaretti biscuits to rough crumbs and stir into 200g crème fraîche. Using tall glasses layer the cream mixture with sliced strawberries or raspberries ending with a cream layer. Top with a fresh berry and a sprig of mint, buzz until thoroughly combined. Season to taste and store in the fridge. Makes about 160ml.

Jim Avis

Local Lindfield Painter and Decorator

Available for large and small interior and exterior painting, wallpapering, design or improvements.
A trustworthy professional service.

Please call for a quotation.



Jim

01444 484921

07861 794475



Café Elvira at Borde Hill – a great space for a party!

At Café Elvira we love hosting birthday parties, anniversaries, receptions and special occasions. We'll work with you on detail and food, all freshly made and scrumptious. (Minimum of 30 guests for exclusive evening use.)

Please call Vera or Natalie on **01444 458845** or email **info@café-elvira.co.uk**

Afternoon tea...

As well as breakfasts, lunches and cakes, we now do complete afternoon teas (pre-booked, min four people). An indulgent treat, or the perfect present.

£17.50 per person or £25.50 with a glass of Prosecco, £27.50 with a glass of Champagne.

www.jeremysrestaurant.co.uk/cafe-elvira/



Jeremy's restaurant

The world on your plate, in the heart of Sussex. Fine food, warm service, garden, terrace, family celebrations, corporate events, wonderful weddings...

Borde Hill Garden, Haywards Heath, West Sussex
Tel: 01444 441102 • www.jeremysrestaurant.com
reservations@jeremysrestaurant.com



Home & Business Security

- CCTV
- Intruder Alarm Systems
- Door Entry
- Installations
- Upgrades
- Maintenance
- Service



Satellite TV & Aerials

- Satellite TV For Sky, Freesat & European Channels - French, German, Italian, Spanish & More
- TV & Radio Aerials
- Aerials for Freeview, BT TV & YouView
- Extra TV, Satellite, Internet Points
- Tv Wall Mounting Service
- Multi Point Systems



FREE
survey for
new
systems

**Realign
Service
Repairs**

**Installation
Upgrades
Maintenance**



01444 318089

www.norsat.co.uk

www.norsatsecurity.co.uk



Do you want help with technology?

Step by step help with no 'gobbledygook' and on-going support for you

Every aspect of technology covered:

- PCs, Laptops, Tablets, Smartphones,
- Software, Networks, Microsoft, Apple
- Security, Backups, Data Protection
- Using the Cloud
- Connecting all your devices, access from anywhere



Call Lindfield resident Richard now on 07831 196534 for a no obligation chat to see how he can help or email: richard@absolute-solutions.company

Retired Police Decorators & Handymen

Trust in
Blue

0800 255 0 255
trustinblue.com



2 YEAR WARRANTY AS STANDARD* 4 YEAR WARRANTY on Z122R †

* Conditions apply to the 2nd year. † Z122R has a 4 year, 300 hour warranty. See your Kubota dealer for details.

Cash in *this Spring*

This Spring make sure your lawn gets off to the right start with a Kubota ride-on mower. With unmatched performance, excellent fuel economy, legendary reliability - and now with up to £300 cashback* - it's never been more affordable to upgrade to a Kubota ride-on mower.

OFFER OPEN UNTIL 30th JUNE 2018

www.kubota.co.uk



ROD GASKIN LTD

Rod Gaskin Ltd, Holmsted Farm, Staplefield Road,
Cuckfield, Haywards Heath, West Sussex. RH17 5JF
Telephone: 01444 229429 Email: tom@rodgaskin.co.uk

The seventy two hour rule



Research suggests that within seventy two hours of a joint fixation, it begins to degenerate. If adjusted within one week of the fixation it can be reversed.

So if in an accident, get adjusted within the first week.
Telephone **01444 484582**.

Jennifer Layton BSc Grad Dip Chiro / Lindsey Wynne MSc Chiropractic
Lindfield Chiropractic Centre, 83 High Street, Lindfield, Sussex RH16 2HN
www.lindfieldchiro.co.uk



Produce, sweet produce

BEHIND THE COUNTER

By Joe Wayte

Most of us have encountered difficult times in our lives that make us reset our focus on what is really important and our next interviewee is no different. From changing the way high street stores operate across the country, to the hardship that has influenced his business decisions, this next edition of Behind the Counter takes a bite into the life of Paul Bignall – owner of Paul's Greengrocers.

In 2006, Shirley Temple shared some words of wisdom at the Screen Actors Guild Awards: "I have one piece of advice for those of you who want to receive the Lifetime Achievement Award: Start early!" Paul Bignall, let me tell you, started very early.

After six weeks in Spain celebrating the World Cup, Paul returned home and needed two weeks to recover! "My Mum got frustrated with me lazing around and made me go for an interview at Sainsbury's," Paul told me. "I got the job and they must have seen something in me as they offered me a management opportunity and sent me to Hastings for 12 months."

Once he'd learnt the ropes and got to grips with all of the different operations, Paul passed with flying colours. He was then moved around the South East of England opening stores, setting up new displays and getting employees on their feet. It was during this time that Paul was posted as an Evening Manager in one of the shops. "Supermarkets were getting busier and busier as people started to enjoy the big retailers that sold lots of items in one place. However, staff weren't able to keep up with re-filling the shelves before it was time to close. We were constantly chasing our tails," Paul explained, "and so I asked to keep a selection of staff overnight and we trialled overnight re-filling." After a successful pilot, Sainsbury's – along with other supermarkets – began

to roll out overnight re-filling and it's now a standard practice.

He moved to a different retail company but after a couple of years had to make the tough decision to either stay with the big retailers or leave and go and help his mother with her greengrocers business that was sadly struggling due to the increase in larger supermarkets and the early 90s recession taking affect. Paul saw the opportunity and decided to take over the business. "It was the 80s and my Mum also worked for the same company. When I was younger, I always swore I'd never work with my Mum, and I didn't want to own a shop or factory," Paul told me trying not to smile, "I opened the current shop in Lindfield and my Mum moved across to look after it and then launched another store in Hurstpierpoint."

Twenty five years later, Paul invests all of his time in his base on Lindfield High Street. You might not have even noticed the shop, and that's because Paul refuses to put any produce outside to promote it due to the bus stop and car fumes.

Paul's wife actually used to live just behind the shop. "During my misspent youth I played a lot of pool at the pub," Paul reminisced, "one day, a young lady walked passed me and I had to ask who she was. It turned out her parents played pool for the same team as I did – so I asked them if I could take her out. That was 29 years ago."

Paul and his wife received the devastating news that they were unable to have children. In 2005 a blessing arrived in the form of a son, but after a brain tumour was found he sadly passed away in 2006. In 2008 the couple found themselves pregnant again and gave birth to a



Paul leaves home at 2.30am to buy the produce, then he prepares and delivers his wholesale orders before setting the shop up for that day

daughter, Chloe. "At the end of last year, the person I had running the shop moved on," Paul explained, "and while I decide what to do next I've reduced my trading hours, because I'm determined to spend as much time as I can with my daughter. I refuse to miss watching her grow up."

"Chloe absolutely loves the shop," Paul said gleaming, "she wants to be an optometrist currently but she also loves playing shop and coming to the store. She's great at maths too." The family spend lots of quality time together, with Paulton's Park and the Peppa Pig ride being a firm favourite for Chloe. They also take trips to their holiday home in Spain as well as camping trips around the UK.

Alongside the shop, Paul also operates a successful wholesale service delivering fresh produce to local schools, nursing homes and businesses. On an average day Paul leaves home at 2.30 am to buy the produce he needs for the day and prepares and delivers his wholesale orders before setting the shop up for that day of trading. Paul also offers Lindfield residents a 'plastic

free seasonal veggie box' scheme that can be delivered to their front door every Wednesday or can be collected from the shop Wednesdays, Thursdays, Fridays and Saturdays.

Most of the items Paul sells are sourced from around Sussex and Kent. The only pieces that aren't are things like bananas, which can't be grown locally. "I go to markets where all of the sellers from Hurst, Henfield, Cuckfield, Worthing, Littlehampton, Chichester and more can come together in one place," Paul said. "I'm also doing some investigatory work on the packaging I use because I'd like to be environmentally friendly where it's possible while keeping costs down for my customers."

You might be interested to know that Paul's best seller isn't actually edible to humans... "a few years ago the local council approached me about there being too much bread in the pond and it being unhealthy for the ducks," Paul revealed, "so I started stocking specialist duck food which you can buy for 50p a bag, and it flies off the shelves!

"I thought I'd be sat with my feet up by now," Paul mentioned, "but I've got to keep going so I can offer Chloe a great education. I'd most likely get bored if I did stop anyway!"

In conclusion, I asked Paul for some advice for aspiring business owners. "Offer a personal touch," he responded. "And earn a living while still having a good social life."

Paul's is currently open on weekdays from 9am until 2pm and on Saturdays from 8am until 4pm.

ARDINGLY RESERVOIR Something for everyone

- *Adult and junior courses*
- *Sailing*
- *Windsurfing*
- *Kayaking*
- *Parties*
- *Hire a Stand Up Paddle Board or Sit On Top Kayak*
- *Enjoy a beautiful waterside walk*
- *Café*



ardinglyactivitycentre.co.uk 01444 892549

Jakki Todd

The Lindfield Beautician

Jakki is an Aesthetician with over 30 years experience offering Beauty Treatments, Electrolysis & IPL Permanent Hair Reduction in a private home with parking facilities.

- Facials
- Waxing
- Electrolysis
- LVL Lash Lifting
- Aromatherapy
- St Tropez Tanning
- Eyelash/Brow Tinting
- AHA Skin Peeling Facials
- Manicures and Pedicures
- IPL Permanent Hair Reduction

Gift Vouchers Available

For full Treatment List & Prices visit www.jakki.net
Email: info@jakki.net
Tel: 01444 487474

APPOINTMENTS ONLY

**Specialising in
Electrolysis & IPL
Permanent Hair Reduction**

beauty therapy and electrolysis

Your local business support service



Documents



Lifestyle



Creative



Accounting

From creating modern, content rich presentations to accounting assistance and lifestyle management, The Executive Administrator offers personalised services to help your business grow. By streamlining your administration tasks and offering outsourced business support expertise, The Executive Administrator allows you to concentrate on the more important areas of sales, strategy and service delivery.

Jacqueline Elmore runs
The Executive Administrator

With vast experience in business support and executive assistance for large corporations, national charities and smaller start-ups, Jacqueline is driven to ease the day to day stresses that all small businesses face. Call Jacqueline on 07958 451 462 or visit our website to see if we can help your business grow!



texa
the executive administrator

Contact us on
info@theexecadministrator.com
to discuss your requirements.

www.theexecadministrator.com



**PROTECTING
YOUR ROOF**

**G&S
Roofing Ltd**

The Confederation of Roofing Contractors stands for
**INTEGRITY, RELIABILITY &
CUSTOMER PROTECTION.**



All members of the CORC can offer customers the benefit of a fully insured 10 and 20 year back up guarantee

Our successful business has expanded into Sussex



CURE IT
GRP WATERPROOFING SYSTEM

- RESIN MATERIAL OUTLASTS THE BUILDING
- FIRE RETARDANT
- CANHOOD BE CUT
- MAINTENANCE FREE
- NO JOINTS, SEAMS OR WELDS
- UV RESISTANT & WATERPROOF
- ENVIRONMENTALLY FRIENDLY
- THREE FINISHES / THREE COLOURS
- 25 YEAR GUARANTEE

*The Next Generation
of Flat Roofing*

We Specialise in...

- New Roofs • Flat Roofs • Tile & Slate Roofs • Re-pointing Chimney Stacks
- Leadwork • Valleys Renewed & Repaired • All Roof Repairs
- New PVC Fascias & Gutters • External Painting • Moss Removal

Free Estimates No Obligation Pay No Deposit

ALL WORK FULLY GUARANTEED!

OFFICE: 01403 560172 / 01483 378511

MOBILE: 07425 396324 EMAIL: gandsroofinglimited@gmail.com



DRAYTON Plumbing & Heating Ltd

Call Vic Drayton on 01444 458558 or 07703 255305

- Free estimates & advice
- Fully qualified & experienced engineers
- Local services throughout Mid Sussex
- Energy conservation advice
- All work guaranteed & liability insured.

draytonplumbing@btconnect.com www.draytonplumbing.co.uk



Natural Gas | Liquid Gas | Oil & Solid Fuel | Alternative energy systems | Service | Maintenance | Full installations

HIRE US TO SELL OR RENT YOUR HOME

01444 657 657

[f /moverev](https://www.facebook.com/moverev) [@moverevolution](https://twitter.com/moverevolution) [i move.revolution](https://www.instagram.com/move.revolution)



move revolution

Can you help Guides groups?

By Mandy Fisk

Here in Lindfield we have two Brownie units and two Guide units. We have lots of fun doing many different activities both indoors and outdoors ranging from playing games and creating crafts, to camps and hikes. The Brownies love making crafts and, for the Guides, the summer camp is the highlight of the year. Girls who take part in Brownies and Guides are given the opportunities to have fun, make friends, meet challenges and have adventures.

All the units are run by volunteers and for various reasons some of our leaders are leaving and, sadly, without more adult leaders the units will close. In fact 2nd Lindfield Guides closed at the end of last term and the 4th Lindfield Brownies will be closing at the end of this term.

We think it's really important to have clubs like these available to the children in our village, but we need the support of the community to keep these units going. Do you think you could help us? Either as a leader or an occasional helper. You won't be on your own, there is training and support available for you.

You can find out more and register your interest at www.girlguiding.org.uk or you can email 1st.lindfieldguides@gmail.com



BORDE HILL GARDEN



May Half-Term

NATURE: No App for That

26 May - 3 June, 10am - 5pm daily

Put down your electronic device and spend time outside, playing, creating and exploring.

A week of exciting activities connecting children with nature, including a daily trail, and on selected days nature-themed crafts, face painting, storytelling and more...

FREE trail with a small additional charge for some activities

www.bordehill.co.uk 01444 450326 RH16 1XP



Operatic High Tea

1 July, 3-5pm

Enjoy a traditional High Tea and a glass of fizz with the elegance of operatic highlights performed by Opera Brava.

See website for details



Registered Charity No: 246589

Looking forward to springtime?



Spring flowers



Mowing the grass



VAT Return done?

Whatever the season PRB can help your company with all accounting needs including VAT Returns! We also do payroll, tax planning, bookkeeping and personal accounts and Tax Returns.

For further information or to arrange a FREE chat with Chris about your own needs, call 01444 458252 today.



 **PRB accountants**
the accountants you can count on

WEB
www.prbmp.com

TEL
01444 458252

Kingfisher House, Hurstwood Grange, Hurstwood Lane
Haywards Heath, West Sussex RH17 7QX

Lest We Forget

During 2018, and to commemorate the 100th anniversary of the end of the First World War, we will provide details of the tragic deaths of 64 men with a connection to Lindfield, who are remembered on various War Memorials (original research by Chris Comber).

Harry Arthur King

Private L 7952. 2nd Battalion, Royal Sussex Regiment. Killed in action, aged 31, at Vendresse on the Marne 14th September 1914. Buried at Chauny Communal Cemetery British Ext. F1893.

Survived by his wife and 2 children of Porter Cottage, 7 Eastern Road, Lindfield.

William James Cuthbert Laker

Private G 15839. 11th Battalion, Royal Sussex Regiment. Killed in action, aged 18, near Sanctuary Wood, Ypres on 25th January 1917. Buried at Vlamertinghe Military Cemetery B4.

Survived by his father previously of The Grocery Stores, Walstead.

Joseph Ledbury

Lance Corporal TF 2759. 1/4th Battalion, Royal Sussex Regiment. Died of spotted fever at Brighton Hospital, aged 29, on 1st February 1915. Buried at Brighton City (Bear Road) Cemetery, Brighton.

Reginald Charles Legge

Lieutenant. Machine Gun Corps. Captured on 15th September 1915 during the first use of tanks at Flers and died of his wounds the following day, aged 34. Commemorated at The Thiepval Memorial MR 21.

Survived by his mother of Greenwoods, High Beeches Lane, Lindfield.

Ernest Leppard

Private G5561. 1st Battalion, Queens (Royal West Surrey) Regiment. Killed in action, aged 25, on 24th August 1916. Commemorated at The Thiepval Memorial, Ypres MR 21.

Survived by his mother of 8 Albert Cottages, Sunte Avenue, Lindfield.

Leslie Gordon Longley

Lieutenant. 19th Battalion, Lancashire Fusiliers. Killed in action, aged 22, on the Somme on 12th July 1916. Previously wounded in May 1915. Buried at Bouzincourt Communal Cemetery Extension F296.

and his brother...

Richard Ferguson Longley

Lance Sergeant A326, DCM. 7th Battalion, Kings Royal Rifle Corps. Killed in action, aged 22, on 15th September 1916 during the battle of Flers Courcellette. Commemorated at The Thiepval Memorial MR 21.

Leslie and Richard were survived by their parents of 'Ingleside', 12 Sunte Avenue, Lindfield.

BOOK ONLINE
TO SAVE
UP TO **15%**



LIVESTOCK * EQUESTRIAN * AGRICULTURE * HORTICULTURE * COUNTRYSIDE



OUR COUNTRY SHOW

ENTERTAINMENT * LIVE MUSIC * FOOD & DRINK * SHOPPING * FAIRGROUND

7-9 JUNE 2018

SOUTH OF ENGLAND SHOW

BOOK TICKETS TODAY seas.org.uk/booking

Under 16s **FREE** with paying adult • 01444 892700

South of England Showground, Ardingly, West Sussex RH17 6TL



@SouthEngShows



Helena Hall watercolour for sale

A Bedford resident is asking if anyone with a connection to former Lindfield artist Helena Hall, wishes to purchase a sepia watercolour.

John Kaminski bought the piece at auction some years ago but is now downsizing and wants to pass it on. "We researched the artist and found her connection to Lindfield, so have started here," he commented.

John is looking to recoup the £100 he paid for the original painting. Contact him by email jontiek49@gmail.com for more information.

More people flocking to Wakehurst

Wakehurst is officially in the top 100 attractions in the UK, after visitor numbers increased 18 per cent last year, according to figures published by the Association of Leading Visitor Attractions.



Wakehurst jumped eight places to 96th, overtaking Nymans Gardens, with almost 35,000 people visiting the garden last year, its best performance for five years.

Tony Sweeney, Director of Wakehurst, said: "We are delighted. We are constantly striving for excellence and have invested in new areas. Recently we opened up Westwood Valley, increased our wild play areas for children with the installation of Tree Trunk Trek and introduced exhibitions such as Secret Structures – inside the story of plants and fungi.

"And a newly designed Winter Garden is in the final stages of being planted with 33,000 plants that will begin to flourish later this year."

Wild Wood Festival will take place 26th – 28th May and The Kew Science Festival at Wakehurst will be held 21st – 22nd July.

Do you want a website that's easy to self manage?

strategicmarcomms

Rebecca Jabbar from Strategic Marcomms looks after every element of website creation, with minimal time required from the business owner. With 20+ years' marketing and communications experience, Rebecca can help your business stand out from the competition.

01444 301 302
rebecca.jabbar@strategicmarcomms.com

- STRUCTURE PLANNED
- DESIGN DONE FOR YOU
- MOBILE-OPTIMISED
- IMAGES FOUND FOR YOU
- CONTENT WRITTEN
- SEO DONE FOR YOU

The spring personality

HOMEFRONT



By Jacqui Smith, interior designer

Last month I talked in general terms about colour psychology. It's the study of colour and how it relates to human behaviours. Most of us are a combination of types but we will all be dominant in one. By understanding this we are better able to select colours, textures and styles for our home which echo our personalities. The types can be described as vibrant, muted, earthy and icy though you will often see them referred to by the seasons; spring being vibrant, fresh and clear; summer as muted, delicate and cool; autumn being earthy, warm and intense and finally winter as the extremes of icy and intensely cold and dark. Spring and autumn colours are yellow based and summer and winter are blue based. Colours from the same time of year have a natural affinity with one another and when placed together simply work. When a colour scheme does not work and jars it will be due to the colour palette not sitting within the same season. With each type or season and its colour palette come personality traits.

So what's the typical spring personality? A spring person is fun, playful, energetic, optimistic and externally motivated so make wonderful hosts. Spring people are seen as warm and approachable, creative and fun to be with. Typically they are forward thinking and spontaneous; they are absolutely the type to just get on with things. Much like the clarity of the spring palette, the spring person is clear in his or her communication style. Spring is all about lightness and sparkle. When it comes to interiors, a spring person loves bright airy spaces, high ceilings and big windows. Heavy window treatments would be all wrong for spring; it's all about maximising natural light. Connecting with the outdoors is important to a spring person so house plants and fresh flowers will feature. Furniture is light wood and simply designed - think Scandinavian style.

Patterns are delicate and unfussy and certainly not geometric. Textures need to be shiny or smooth and fabrics will be light and fresh like linen or cotton. Shapes and styles associated with spring would be circles so spots and polka dots. You would find a round table or mirror in a spring scheme rather than anything angular. Finishes must have a slight sparkle or shimmer so anything that catches the light will appeal to the spring personality. You would never see black in a spring scheme. The outgoing personality of a spring person means that their homes will be regularly filled with guests so the interior needs to support this. This is not to say that the spring person enjoys any formality when it comes to entertaining; quite the opposite. The spring host is relaxed and fun.

I mentioned before that most people tend to be a combination of seasons but their primary personality will always dictate the palette of the interior and the secondary the style. So if you are primary spring, the colours you would lean towards would all sit with the clear and bright seasonal tonal palette of spring. However your style might be more in keeping with one of the other seasons. In our work we are rarely designing for a one person so this theory of primary and secondary personalities can be really helpful in finding some common design ground for a couple. Next month I shall be looking at the summer personality type.

www.homesmiths.co.uk 01444 440880

Wakehurst's wonderful woodlands
come alive this May bank holiday

Family activities | tree climbing | storytelling | birds of prey

26 – 28 May

Wild Wood Festival

Wakehurst

For details visit kew.org/wakehurst

Royal Botanic Gardens **Kew**



Abi Gurney Hat Hire

By appointment only...



www.abigurneyhathire.co.uk

01825 715448

abigurneyhathire@gmail.com



ELECTRICAL

WWW.CW-ELECTRICAL.COM

**FREE QUOTES
& FREE SAFETY
CHECKS**

Free Safety Checks
Free Quotes
Circuit Testing and
Certification
Kitchen and Bathroom
Re-Wiring & Alterations
Extra Lights & Sockets
Fuse Board Upgrades
Complete Re-wires
Telephone Systems

TV. Points
Full Entertainment Set-up
Under floor Heating
Security Systems
Extensions
Storage heaters
Immersion Heaters
Fault Finding
Outside Power and
Lighting



t: 01444 482034

m: 07807 355 632

e: chris.walter@cw-electrical.com

NICEIC Registered
Qualified to the latest 17th Edition





Gray Hooper Holt LLP

Solicitors

(Authorised and Regulated by the Solicitors Regulation Authority)

Your **local** solicitor for all your legal needs.

6 Boltro Road, Haywards Heath

Call us on 01444411333

Visit us at www.grayhooperholt.co.uk

Client car parking

Home visits Out of hours appointments

Dog friendly office



Willow Weaving workshop a success

By Chris Gurr

On 12th March, following last year's success, another Willow Weaving Workshop took place at the Lindfield Scout HQ in Eastern Road organised on behalf of Lindfield Horticultural Society by one of its members, Jenny Samuels.

During the morning session, the participants, under the watchful eye and expert instruction of Jacqui Sweet, thoroughly enjoyed creating obelisks similar to those created last year. Unlike last year, the participants in the afternoon session created Willow Ball structures as useful garden sculptures.

All in all, the whole day was deemed a great success by the Society.

75,000 jobs done by CARE

CARE is a group of 'good neighbours' working diligently to enhance the lives of those less able than themselves.

Founded by the local Council of Churches and now in its 34th year, the charity remains a 100% voluntary organisation, with services provided at no cost to clients.

Since its inception, CARE has kept abreast of the times and administration is now fully computerised enabling volunteers to give a better service to clients.

From collecting and taking clients shopping, to giving lifts to doctors' and hospital appointments, helping with odd jobs in the home or just calling in for a friendly chat, the volunteers from CARE provide a lifeline for dozens of people in our local area.

"Many local people are unaware of the service provided by CARE, so it may come as a surprise to learn that last year the 114 active volunteers carried out nearly 1,800 jobs!" said CARE's Publicity Officer, Frank Nickson.

"CARE is 100% dependant on volunteers and is always seeking new pairs of hands in all areas," added Frank. "When people retire from being active in CARE we have to find willing replacements for them, just to maintain our current service level."

To find out more about CARE call 01444 455955 or visit www.CAREinhaywardsheath.co.uk



Whether you want a stunning bespoke Conservatory, a traditional Entrance Door or a set of replacement windows, Everest has the answer

- uPVC, Aluminium and Amdega timber windows
- Front & Back, Patio, French and Bi-Fold Doors
- Conservatories and Orangeries
- Garage Doors
- Roofline
- Driveways and Patios
- Greener Grass®

Call Russell
your local
Everest design
consultant



Russell Everitt 0800 211 8440

russell.everitt@everest.co.uk

Whittaker

PAVING

Whittaker Paving is a local family-run landscaping business, operating in the Haywards Heath area and serving customers throughout Sussex.

Since 1979 we have specialised in Driveways, Patios, Brickwork and Landscaping. We pride ourselves with our excellent reputation in meeting and often exceeding our customer's expectations.

For more information or to arrange a **FREE no obligation quote** please call us today.

Tel: 01444 450300
Mob: 07729 037660

DRIVEWAYS

PATIOS

LANDSCAPING

email: info@whittakerpaving.co.uk
www.whittakerpaving.co.uk

Funding plea for former Lindfield schoolboy

A former Lindfield schoolboy, scout and soldier who lost both lower legs after a horrific climbing accident is making a remarkable recovery and has his sights firmly set on the Paralympic games.

William Bennett, 26, a former Queen's Royal Hussar, has spent the last year in hospital undergoing 30 operations since his accident in March 2017. Despite his life changing injuries, which also include a fractured spine and the loss of his spleen, Will has impressed the medical teams with his strength, courage, positivity and zest for life.

Now family and friends have launched a crowd funding appeal to help raise £50,000 to buy an adapted van and all terrain wheelchair to help Will continue his recovery and return to the great outdoors.



By Claire Cooper

Will grew up in the village attending Lindfield Primary and Oathall Community College before joining the army.

He served with the Queen's Royal Hussars achieving a rank of Lance Corporal from 2008-2013, as a Tank Driver, then later as a Radio Operator. During a tour of duty in Afghanistan, Will was blown up by an IED, fortunately escaping with minor injuries.

During his time in the forces, Will took part in a variety of sports and activities including sky diving, cross country running and hockey for his regiment. When he left the forces he was inspired to take up rock climbing.

In 2014, Will moved to Bristol to pursue his love of music and adventure and quickly joined the Bristol rock climbing scene. He climbed in many locations all over England, Wales and France.

In March last year Will was 'trad climbing' in the Avon Gorge in Bristol, when a freak rock-fall severed both of his safety ropes and he fell over 160 feet to the ground. He suffered critical injuries including severe lower limb amputations, the loss of his spleen and six fractures in his spine, permanently paralysing him from the waist down.

Will spent four months in Bristol's Southmead Hospital before being transferred to the Duke of Cornwall Spinal Treatment Centre in Salisbury, for further treatment and rehabilitation. He hopes to leave hospital later this year



to continue re-building his life.

"I'm determined to stay as active as I can and not let my injuries hold me back," said Will. "Ultimately, I am determined to participate in the Paralympic Games and represent England in the bouldering climbing discipline."

The Just Giving crowdfunding campaign is being supported by friends and former neighbours from Lindfield where Will and his sister Alex grew up and his family played an active role in village life. Will's dad Geoff, also a former Queens Royal Hussar, was the village policeman and a scout leader while mum Anne was a local driving instructor. Geoff and Anne retired to Cornwall five years ago but still retain close links with the village they love.

"The last year has been difficult for our family, but the overwhelming support we have received from both our friends and well-wishers, many who remain in Lindfield, has got us through the worst of it," said Geoff. "It is amazing how people have responded and Anne and I cannot thank everyone enough."

He added that Will faces a further operation planned to remove the remainder of his left leg, but hopes to leave hospital later this year.

"Will is determined to lead as normal a life as possible and return to some form of employment which

is why our friends have started fundraising to provide him with transport and specialist equipment to propel his chair over uneven terrain. He has lots of friends in

Lindfield and will be visiting his old stomping grounds when he is able."

Former neighbour and friend Julie Reason, from Noah's Ark Lane, who is helping to promote the crowdfunding campaign locally, said: "The Bennett family have so many friends in the village. As our local police officer and a scout leader Geoff made a huge contribution to village life, inspiring many of our children and supporting people in need.

"Now the Bennett family needs our support and we have an opportunity to give something back by supporting the crowdfunding appeal for Will."

Family friend Racheal Reynolds-Smith who launched the crowdfunding appeal added: "In order for Will to maintain a high level of independence and the active lifestyle he loves so much, he needs access to a van he can drive and a wheelchair that can keep up with his ambitions for an active outdoor lifestyle.

"Providing him with these facilities will allow him to join friends on adventures like he did before."

She added: "Throughout all that has happened to him, Will remains positive and full of life, and has shown incredible strength during each stage of his recovery.

"Will's future has been made so much more difficult; but he continues to inspire all those he meets with his determination and optimism for an independent future. If you ever have the pleasure of meeting him, you'll know how caring, friendly and funny he is. He intends to make

the most of what he has; a second chance at life. That's why we have set up the page. We have already received so much support but we really would love to hit the £50,000 target."



To support the appeal visit: www.justgiving.com/crowdfunding/racheal-reynolds-smith or contact Julie Reason on 07725 954045 who is happy to collect donations.



NOW AT No. 2



BRING THIS ADVERT

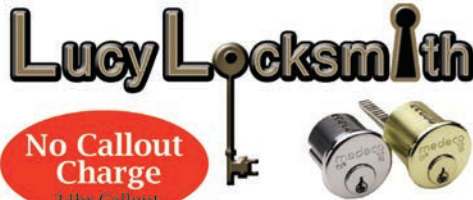
20% OFF*

YOUR NEXT PAIR OF SPEX *excludes sales shelves

CUCKFIELD i WEAR
2 High Street, Cuckfield RH17 5EN
Tel: 01444 459412 info@cuckfieldiwear.co.uk

f **t** **@** **G+**

Lucy Locksmith



No Callout Charge
24hr Callout

BRIGHT FM & CHECKATRADER
"Top Trader of the Year"
Award Winner

Rapid Response • Police checked
Free Estimates • No VAT • OAP Discount
Locks Changed & Upgraded (To BS3621)
uPVC Specialist • Window locks • Garage locks
Lock outs, Break ins, all makes of locks.

**JUST MOVED? WHO ELSE HAS KEYS?
CHANGE LOCKS FOR PEACE OF MIND?**

Always
Checkatrade
Before you use them

07780 840462

STORE THIS NUMBER NOW, YOU MAY NEED IT!
www.lucylocksmith.co.uk lucylocksmith1@gmail.com

Kempe and his palace of art

LINDFIELD HISTORY

By Richard Bryant, Lindfield History Project Group

At the top of the village, stands the grandiose and private Old Place that is largely obscured from view. Perhaps in a strange way, the property goes almost unnoticed when passing by. The impressive size is difficult to comprehend from the roadways, likewise its relationship with the original Elizabethan house onto which it has been 'grafted'. The buildings as we see them today were the vision of Charles Eamer Kempe, the renowned Victorian stained glass artist and church decorator. The 'e' was added to create a grander surname by Kempe on reaching adulthood.

He was born at The Hall, Ovingdean, near Brighton on 29 June 1837, the fifth son and youngest child of Nathaniel Kemp, a wealthy and important member of Brighton society, and his second wife Augusta Caroline. Her father was Sir John Eamer a former Lord Mayor of London and prominent City wholesale grocer and sugar importer. It is thought Kempe was christened Charles Eamer in memory of his mother's younger brother who died aged 18 in India.

The Kemps were a long established Sussex family, originally from good yeoman stock with their wealth having been derived from corn and wool. This is reflected in the three golden wheat sheaves featured in the coat of arms granted in the 1600s. Interestingly, it was Charles Eamer Kempe's uncle Thomas Kemp's house on the Steine in Brighton that was acquired by the Prince of Wales in 1787, eventually becoming the Royal Pavilion. Thomas Kemp is noteworthy for having conceived the idea of a fashionable residential estate in east Brighton, Kemp Town, but unfortunately the scheme caused him great financial difficulties.

Returning to Charles Eamer Kempe, as a boy he was

a pupil of the Vicar of Henfield before attending Rugby School and entering Pembroke College, Oxford where he obtained a Masters Degree. Being deeply religious it had been his wish to enter the church as a clergyman but decided a severe speech impediment would restrict his ability to preach and successfully pursue that vocation. He was a supporter of the Oxford Movement of high church Anglicans promoting the restoration of ritual in worship and aesthetic aspects borrowed heavily from traditions before the English Reformation.

Being interested in art and good at drawing, Kempe chose to use his talents, religious beliefs and aesthetic vision to adorn churches. After Oxford he studied church architecture and design under the tutelage of George Bodley, who was closely associated with Gothic Revival and High Anglican aesthetics. This influence together with Kempe's own beliefs was to be reflected throughout Kempe's work as an ecclesiastical decorator and stained glass artist. He increasingly saw the use of glass as the medium for expressing the Christian message and pursued this by joining the glass studio of Clayton & Bell.

About 1866, Kempe set up his own studio with two assistants at his home in London, contracting out the stained glass making. Dissatisfied with the quality being produced, he set up his own manufacturery at Millbrook Place, London in 1869. Kempe windows incorporate a small shield containing a wheat sheaf as his mark. The studio also created designs for church furniture, altars, and altar screens, and Kempe additionally continued to design vestments and altar hangings. His designs were most sought after and the business thrived, employing 50 men by the end of the century.

Sadly, at the time the studio was continuing to enjoy

great success, Kempe died suddenly on 29 April 1907. The business continued after his death as C E Kempe and Co Ltd under the control of Kempe's cousin, Walter Tower. To mark this change, windows made after his death have a small black tower above the wheat sheaf in the trademark shield. Gradually the desire for Gothic revival designs declined and the business hit hard times closing in 1934. By this time the Kempe studio had produced over 4000 windows, and examples graced churches across the country and many cathedrals including York, Winchester and Gloucester. Many Sussex churches contain Kempe windows and decorations. Unfortunately there are no Charles Eamer Kempe designed windows in All Saints' Church, Lindfield, although there are two by C E Kempe and Co Ltd, these are in the north transept and south chapel.

Kempe never married and, although said to be a shy man, he enjoyed the company of friends. Living in central London, in 1874 he decided to establish a country residence, primarily for entertaining, and chose Lindfield for this project. He purchased the land of Townlands Farm and Old Place (today known as West Wing); the house built by the Chaloners in 1584, which was in disrepair having latterly been the village poor house. His first task was to renovate the property and have the road that passed directly in front of the house moved, to provide privacy and a garden. The revised road line is as seen today. Kempe then set about a 30 year project to create 'Old Place', as his dream home, with its grandiose extensions to the original house, secondary buildings, and extensive grounds, at a cost of over £40,000. Prominent amongst the secondary buildings, in the southern corner

of the gardens, is the substantial Pavilion with its tower, built as his studio for when he wished to 'work from home'.

The main house, built in phases, was resplendently appointed with elaborate

plasterwork, much panelling, arts and crafts style door and window fittings and, of course, featured large amounts of exquisite stained glass. It was richly furnished with much artwork including tapestries displayed.

The entirety was a testament to Kempe's aesthetic vision. Country Life magazine featured Old Place several times in the first years of the 20th century, and the 1901 article described it as, 'the highest development of contemporary taste and skill in artistic design' and judged it to be 'a Palace of Art'. To look after



Kempe and his large house required some twelve 'in door' servants plus a small army of gardeners.

Country Life lavished similar praise on the gardens. The grounds totalled more than 150 acres and included formal gardens, a kitchen garden with glasshouses, and a wilderness garden. The latter, now the site of The Wilderness, was laid out with wide grass walks and shrubs, and reached from the formal gardens by a footbridge over the public footpath leading from the corner of Francis Road. The formal gardens around the house featured lawns, herbaceous borders, a fine pleached lime avenue, ornate gates, great yew hedges, Greek urns and sculptures. A particular attraction was a large sundial, a copy of the dial standing at Pembroke College, Oxford, topped by a carved pelican feeding her young. Very occasionally Kempe would open the grounds for a grand fête and villagers would pay the few pence admission charge and flock to see what was normally out of their view.



Kempe does not appear to have been active in village life, although

he did serve as a church warden for a time. To mark Queen Victoria's Golden Jubilee, he proposed this should be commemorated by adding three new bells to the peal of five bells. He paid for the bells, and the required strengthened bell frame was funded by public subscription, however the project was surrounded with much acrimony. It also appears Kempe offered a Chancel Screen to the church but this was rejected and not accepted until several years after his death.

Perhaps not as well respected as he deserves, Charles Eamer Kempe was one of the great Anglican church artists of his time and Lindfield's most nationally notable resident.

Interested in discovering more about our village history?

Lindfield History Project Group is a small friendly group meeting monthly. Please contact 01444 482136.



Year 4 class in Twitter takeover

As part of their Spring Term topic, 'Go with the flow', Year 4 pupils at Blackthorns Community Primary Academy have learnt about rivers and coasts. At the end of their topic the children investigated some of the things that are a threat to the long-term future of the world's coasts and oceans. They then launched a campaign against single-use plastics and the dangers of these to the environment and marine life.

For the last week of term, children from Class 4H took over the Academy's Twitter page as part of their peaceful protest. They made placards and protested peacefully on the playground at the end of the school day.



New golf scholarships

Two new junior members have been welcomed into Haywards Heath Golf Club with Academy Scholarships.

Maddy Stewart and Dylan Molloy recently received their scholarships from Head Professional James Verrall and were congratulated by Junior Organisers Alex Dalglish and Christine Kernohan.

The pair were selected for their potential and commitment to develop their golf at HHGC and will receive a year's free junior membership, three lessons and 500 free practice balls.

Junior membership at the club has now reached over 100, with more than 60 children in the weekly academy lesson programme. The Haywards Heath professionals visit local schools including Lindfield Primary and Oathall Community College to introduce students to golf.

SJP
Painter & Decorator

25 years experience. Fully Insured. No VAT on labour.

Contact Stuart for a competitive quote:

01444 414 878 07759 454 679 stuartpasmore@hotmail.co.uk



Stunning Websites Built For Local Businesses With Any Budget

We're already helping many Lindfield businesses update their online presence with new SEO optimised and fully-responsive websites. **Can we work with you next?**

Get in touch with your ideas and requirements. We'd love to help!

digital **BERRY**

Mention Lindfield Life Magazine when making an enquiry to receive a 10% discount off any website design & build.

t: 07799 146414
e: hello@digitalberry.co.uk
www.digitalberry.co.uk

The family garage that cares

Car servicing in Lindfield for all makes & models

- ✓ Friendly welcome
- ✓ Top quality service
- ✓ Realistic prices
- ✓ Family owned for over 40 years
- ✓ All car makes
- ✓ MOT testing
- ✓ Engine diagnostics

"Many people in the village have used us for years, why not join them?"



The workshop team



RETAIL MOTOR
INDUSTRY
FEDERATION

Book your appointment today on:

01444 482988 or 01444 483988

Lewes Road, Lindfield, RH16 2LG www.lindfield-motors.co.uk

**Lindfield
Motors**



PROMEDICA24
Live-in companionship & care



Enjoy quality live-in care in your own home

Our expert care workers live with you as a companion and friend

If living at home is becoming a struggle, Promedica24's live-in care service can ensure you can remain in the home you love, cared for every minute of the day by a carefully chosen and trained care worker.

Our care workers live in the home which is much better than having a stream of different people coming in and out of the home through the week, or moving out to a residential home.

Our carefully chosen care workers build strong relationships with their clients and soon understand just what makes them happy.

We can care for couples and those with Dementia and other conditions. We also offer respite care to give home carers a well earned break.

- ♥ Stay in the home you love
- ♥ Short and long term care available
- ♥ Affordable person centred care
- ♥ Stay close to loved ones and pets
- ♥ Advanced care needs supported
- ♥ Care can be quickly provided
- ♥ Tailored to your individual needs

*80% of Doctors surveyed would recommend being cared for in your home**

*The National Institutes of Health

Our live-in companionship and care packages start from £695 p/w



Call Lesley on **07388 326 686** or **01273 257 465**
or visit www.promedica24.co.uk/brightonandmidsussex

CareQuality
Commission

Good



Allotments in Scaynes Hill

Last year gardeners in Scaynes Hill welcomed the news that, after a long wait, allotments were being created in the heart of the village.

As the beds are prepared and first seeds are planted, allotment holder Mark Granger tells us the story behind the allotments, how land off a country lane has been transformed, a sustainable water supply created and how the village's newest community looks set to blossom alongside the fruit, flowers and vegetables.

By Claire Cooper

"My wife is a keen all-weather gardener. I just help out with the lawn mowing and hedge cutting now and again," said Mark.

"We only have a small garden so took on an allotment at Gravelye Lane in Lindfield to grow vegetables. It worked really well and we grew potatoes and runner beans there for a few seasons. After a while, we were less keen on going over to the allotment from Scaynes Hill. It somehow didn't feel right that we had to drive there to take tools – sometimes forgetting to take what we needed and bring the produce back home.

Having allotments in Scaynes Hill is something that has been talked about for quite a while. The idea was included in the Lindfield & Lindfield Rural Neighbourhood Plan.

Rumours that some land had been obtained for allotments in Scaynes Hill were confirmed in the Lindfield Rural Parish Council (LRPC) June 2017 newsletter! We registered interest in having one.

The allotments are in Clearwater Lane in a position with a lovely view to the South Downs. They also seem to be in quite a windy position which leads on to the technology employed at the allotments to provide water.

Getting the local water company to lay a new piped supply to the site was going to be expensive and would also require on-going payments for the water used. LRPC therefore considered alternatives and, to avoid any need for external service connections (eg water, electricity), decided on providing water from an on-site borehole powered by renewable energy.

The hole was bored about 40 m deep into the underlying water bearing sandstone and pump tested to ensure adequate flow could be obtained without the well drying up. The permanent pump was then installed near the bottom of the borehole and connected to a rechargeable battery in a small cabinet at ground level. A mast mounted solar panel and wind turbine provide sufficient power to keep the battery charged in all weathers so that the water can be pumped into a tank and trough from where the allotment users can take it. The tank contains a level switch, which detects



when the water level in the tank falls significantly and turns on the pump. When the tank is full again the level detector turns off the pump, so that no energy or water is wasted. Thus the allotment holders are provided with an almost limitless supply of clean water by means of a fully sustainable renewable energy solution!

By Christmas we had been allocated an allotment, signed up and paid the annual fee. We often walk past the allotments so saw developments as they happened – hard standing for vehicles, installing the bore hole etc.

Fast track to March 2018 and our plot has been dug over, de-weeded and covered with a porous membrane to hold back the weeds from re-growing. A few trips were made to secure the membrane from blowing away - no car needed this time!

Scaynes Hill has a strong community spirit and the allotments have already drawn people together through a chat between digging. I spent a few days helping to put the metal shed together and met a fellow allotment villager in the process.

From conversations with others it seems the 'expertise' will be quite variable from experienced gardeners to those who have never done any gardening. Already people are starting to think about how to help each other. A BBQ has already been suggested along with a Facebook allotment group!

The village has a Sustainability Group that meets regularly. Members initiated a fruit and vegetable share scheme in the village where anyone with fruit or vegetables they cannot use puts them on a cart outside the church. Anyone can help themselves at no charge. If we can't eat everything we grow – we can avoid wasting the vegetables.

On 9th June Scaynes Hill will again be running a village Open Gardens scheme in aid of St Catherine's Hospice. A couple of allotmenters will be around to talk about their allotment and the renewable energy water solution – plus there will be gardens opening as well. Why not go along?



**BORDE
HILL
GARDEN**

OPEN AIR OPERA

Buy tickets online at:
www.bordehill.co.uk
www.operabrava.com

Britain's leading outdoor touring company present two evenings of summer opera, performed against the magical backdrop of the Elizabethan Mansion House.

Puccini's **La
Bohème**

Fri 27 July

Tickets (advance booking required)

Early booking: £30 (when booked before 30 June), Standard: £35 (when booked in July or on the night), Child: £10 (5-16 years old)



Opera **B** Brava

Mozart's **The
Marriage
of Figaro**

Sat 28 July

Gates open for picnics at 6.30pm
Performances begin at 7.30pm



Tel: 01444 450326 www.bordehill.co.uk West Sussex, RH16 1XP



RECYCLE THIS...

WSCC Recycling Ambassador Colin McFarlin sheds some light on what can and can't be recycled in our domestic blue bins. If you have a question for him, email: editor@lindfieldlife.co.uk

One of the most frequent questions I get asked is about plastic milk bottles, and tops in particular.

The easy one first...

All plastic milk bottles can be recycled in your blue top recycle bin. Do not worry about removing the label. In the recycling process this is removed.



However, milk bottle tops CANNOT be recycled in your blue top bin. Let me explain. Yes, it is plastic but it is the size that is the issue. When all your recycling arrives at the West Sussex Recycling plant at Ford one of the first processes is to remove glass.

This is done by allowing the broken glass to fall through the holes in the large drum, called a Trommel. However, the small plastic lids are small enough to also fall through the holes and pollute the glass. No plastic lids smaller than coffee jar lid size please.

Did you know that charities collect these milk bottle tops, and raise money? Do let us know if you are aware of a charity that collects these, and where they can be dropped off. Or are you a charity that would like to start collecting and raise funds for your charity? I look forward to hearing from you.

I'm always asked about window envelopes. These CAN be recycled in your blue top recycling bin. Historically this was not always the case, however the recycling process was improved some time ago and we can now accept all window envelopes, white or brown!



This plastic cereal packet CANNOT be put in the blue bin, as it is made of a type of plastic that cannot be recycled. The way to tell if it can be recycled is what we call the 'Scrunch Test'. Crunch it up in the palm of your hand and when you open your hand does it spring back open. If it springs open it CANNOT be recycled. Crisp packets are the same, they CANNOT be recycled.



Lindfield VILLAGE RUN 5k/10k

Bank Holiday Monday

28th May

Enter online before 21st May:

www.kingedwardhall.org.uk

With the kind support of our brilliant sponsors:

POTENTIAL
PERSONAL TRAINING

SIX PHYSIO
DON'T TREAT. CURE

Mortgage and Protection Adviser

Tara Fraser

- Mortgages
- Remortgages
- Buy to Let
- Help to Buy
- Life Insurance / Protection

For whole of market Mortgage
and Protection advice call Tara:

07714 459022

01444 443410

tarafraser_mortgageadviser@yahoo.com

Think carefully before securing debts against your home. Your home may be repossessed if you do not keep up repayments on your mortgage or any other debt secured on it.

JULIAN
HARRIS

Tara Fraser is a Mortgage Adviser with Julian Harris Mortgages Ltd, authorised and regulated by the Financial Conduct Authority No. 304155. Co No. 3927189. Registered office: Julian Harris House, Musgrove, Ashford, Kent TN23 7UN.



Coal Black Mornings by Brett Anderson

BOOK REVIEW

By Cavan Wood

Rock stars need something to be rebellious against. For Brett Anderson, it is not the man – the faceless person who would dominate music and the world – but it – well, no easy round this, it is Haywards Heath!

From Bentswood and an education at Oathall school, Brett began to develop his talent which led to the founding of the band Suede. With a father who was a taxi driver obsessed with the composer Liszt and a mother who was an artist, he had a background that was oddly Bohemian. With another Haywards Heath resident Mat Osman (brother of 'Pointless' star Richard), he bewailed the narrowness and dullness of the area. Call it a touch of civic pride, but here I part company with Anderson – there are many more duller places than Haywards Heath. However, in one sense, it isn't about what Haywards Heath was or is – it is about what it becomes in the mind of the artist, the creative irritant that leads to greatness.

This is a well written, often poetic book as you might expect from someone who writes lyrics for a living. It shows how bands develop and the ways members of groups need to have obsessions and a single-mindedness to succeed.

The author does show some critical self –reflection, especially over his failings as he sees them, to handle the death of his mother well.

DENZILOE

Like
us on



Hair Designers



01444 484424 www.denziloe.co.uk

77 High Street, Lindfield, Haywards Heath RH16 2HN



Introductory
Offer for
New Clients

£20 OFF
any service

*Excludes Gentlemen
and Children
New Clients Only
Expires 31st May 2018*

*Bring this Lindfield Life ad
to qualify for discount*

Photo Quiz

It's just a bit of fun, but how many of these locations near the High Street can you identify from these close up photos? Answers are printed on page 63, or you can see the full photos on the website at: www.lindfieldlife.co.uk/lindfield-blog



1



2



3



4



5



6



7



8



GIELGUD
ACADEMY
OF PERFORMING ARTS

RAD & ISTD Ballet
Tap, Modern, Jazz
Contemporary Dance
Drama, Screen Acting
and Musical Theatre
for children age 3 - 18

To book free taster day
admin@gielgudacademy.co.uk
01444 848656

Classes held in Lindfield and Haywards Heath
on weekday evenings and all day Saturday

GAPA Office
John de Mierre House
20 Bridge Road
Haywards Heath
West Sussex, RH16 1UA



www.gielgud.com



Nature: No App for that!

During this May Half Term why not put down your electronic device and spend time outside, playing, creating and exploring at Borde Hill Garden?

Younger visitors can enjoy a Nature Trail to find out about some of the birds and bugs that make the Garden their home, as well as the colours, shapes and smells of the natural world.

During the holidays there will be face painting, storytelling, a hands-on experience with snakes, lizards and spiders and a children's photo workshop.

The new Woodland Trail invites visitors to discover Warren Wood and the stunning display of bluebells that bloom at this time of year.

For those a little more adventurous, why not try orienteering in the parkland? Pick up a map at reception and see if you can find all the control points in the park.

For more details see: www.bordehill.co.uk

TOBY & FLY

MOBILE DOG & CAT GROOMING



At Toby&Fly we'll take care of your dog and cat's every grooming need in our luxuriously customised climate controlled mobile grooming parlour.

07555 277139 • hello@tobyandfly.uk

Visit our website for more information:

www.tobyandfly.uk



Care at Home

"Home is where the heart is"

Assistance with all aspects of personal care can be provided including:

- Live in care services available
- 24 hour care
- Night sitting or sleep over service
- Getting up or putting to bed service
- Hospital discharge co-ordination
- Shopping, Laundry, Bathing assistance
- Meal preparation / provision
- Outings, Special Events & Holiday escorting services and companionship
- Liaison with social workers, district nurses, family and friends.

Support for all the above is provided by professional, fully qualified and experienced health and social care workers. If you would like to discuss your own personal care requirements or for a member of your family or friend, please do not hesitate to contact your local Everycare regional office.

We are committed to employing top quality carers. If you have a kind and caring nature and would be interested in joining the Everycare team, please contact the office with your details.



Recruiting Now,
No previous experience required
Good rates of Pay and hours to suit

EVERYCARE MID SUSSEX

68 Victoria Road, Burgess Hill RH15 9LH

Tel. 01444 244770

Email: midsussex@everycare.co.uk

www.everycare.co.uk



Holiday snaps

We love seeing your copy of Lindfield Life getting around the world, so do please take a snap and email it in to photos@lindfieldlife.co.uk - thanks!



Photo features Peter and Jennifer Diack at Lee Abbey, North Devon

Fed up with your dirty windows?

VMP
WINDOW CLEANING
OVER 30 YEARS EXPERIENCE

**Traditional window cleaning
or reach and wash
(poles and brushes)**

- Residential or commercial
- Regular scheduled service or one off cleans
- Window insides can be included
 - Fully insured
 - Local firm (Burgess Hill)
- UPVC fascias, soffits & guttering
 - Cladding
 - Gutter clearance
 - Conservatory roofs
 - Solar panels

**Please call Vince on 01444 236562
or 07870 284971 for a free estimate**

In memory of Graham Victor Seanor



Mark Goldstone shares his memories of his father-in-law and former Lindfield business owner, Graham Seanor whose pharmacy shop, 'Selbys', has been a part of village life for many years.

By Mark Goldstone

Although Graham was raised in Sussex, something I shared with him was our birth place of Blackpool. Graham was born during the war, a time when so many families were displaced from their home towns.

Graham's family settled in Mid Sussex where he attended Brighton College. After qualifying as a pharmacist, his career running Selbys in Lindfield started in 1966. He loved running the business and he served the people of Lindfield for many years, eventually retiring in 2001.

He enjoyed something I think everyone aspires to - a very active retirement. He regularly returned to the shop to work as a locum pharmacist for many years after the business changed hands.

As his son-in-law, I always considered him to be of boundless generosity and a very welcoming host - even when his daughter came back from university with me. He was also a man of intense privacy - quiet, shy and reserved; and a true gentleman.

But dig a little below the surface and there was so much more to know.

He was a tremendous family man who loved seasonal gatherings. As the years went by, the dinner table needed to get larger and larger and more people fought for the last of 'Grandma's roast potatoes'.

My direct experience of his pharmacy business manifested itself in quantities of excess stock being brought back to my home in Yorkshire not perfume, talcum powder or cosmetics... but soft toys. My house, much to the delight of my young daughters, is a teddy bear refuge, thanks to Graham.

I have no pharmacy expertise, but I think a key skill must be precision measuring and weighing. Which leads me onto one of Graham's great pastimes - cake making. Graham's famous Christmas cakes should have come with a pharmaceutical warning: 'May contain alcohol, do not operate machinery or drive immediately after eating'!

Aside from 'bake-off' potential and finding new homes for soft toys, Graham had many other talents. He enjoyed sailing, flying light aircraft, shooting, photography and motorbikes. At his home in Cuckfield, he managed to dabble in animal husbandry: keeping geese, chickens, and a small flock of sheep. He gave his time to the community as a police search and rescue volunteer.





Graham loved his gadgets, he was a true tech geek and a very 'early adopter' of the latest inventions. I never needed to read journals, I just consulted with Graham to learn the latest trends. Given that all of his children now work in tech jobs, clearly this love of ever-changing technology is something he has passed on to future generations.

My favourite stories about Graham are from travels in his youth. Who else can claim to have been trapped behind the iron curtain even as further borders were closed in the early 1960s?

Clearly the Russians never thought that the young man in a Selby's pharmacy van was a threat to international relations as they were happy to have people take photos of him parked outside famous landmarks.

Away from Action Man interests, Graham loved his garden. At this point I want to talk briefly about tractors. Tractors for city dwellers, like me, are something which just slow down our busy lives as we travel. Tractors for Graham were a focal point, bringing together his love of gardening, tech geekiness, sheds and petrol; they were also useful for cutting grass but I do think that might have been an afterthought.

Wine and cheese were also a passion, before the physical health regime, which would shame people half his age, kicked in. Graham spent an inordinate amount of time searching out great, but good value wines. Impressive, as by his own admission, he had no sense of smell.

Graham passed away on 21st July 2017 and leaves behind his wife Golda, their four children, Yvonne, Geoffrey, Jonathan and Richard; and his seven grandchildren. Like all good granddads, he was very happy to be bossed around. I know he was very proud of all of them.

Personally I am really grateful that I was allowed to share in his life of kindness, generosity, eccentricity and sheer bloody mindedness. I am sure I am not alone.



Mortgages – why pick your own when we can find you the cream of the crop?

Whole-of-market mortgage advice for:-

- First-time buyers
- Purchase mortgage
 - Re-mortgage
 - Buy-to-let
 - Let-to-buy
- Second homes
- Holiday homes
- Commercial
- Self builds

Strawberry Finance

www.strawberryfinance.co.uk

Tel: 01444 414142

7 Muster Green, Haywards Heath
West Sussex RH16 4AP

Strawberry Finance is a trading name of The Finance Planning Group Limited, which is authorised and regulated by the Financial Conduct Authority.

The Finance Planning Group Limited, registered in England and Wales, 3894404. Registered office: Hurstwood Grange, Hurstwood Lane, Haywards Heath, West Sussex, RH17 7QX. Telephone 01444 449200. Fax 01444 449209.

Why go 'limited'?

LISTEN TO THE LAWYER

If you have a legal question do email editor@lindfieldlife.co.uk and we'll put it to Martyn.

By Martyn Gooch, partner Rohan Solicitors

Question: I am currently running my business as a sole trader, what are the advantages of becoming a limited company?

Answer: If you are a sole trader and your business expands and become more profitable it may be time to consider changing its structure to a limited company, especially if you are seeking financial investment to grow the business further. However, the decision has significant legal, taxation and financial implications that you should carefully consider.

As a sole trader you are personally liable for the debts of your business. That may not be an issue if for example you are a part-time gardener with ten customers all of which are friends and family. In this case your liability if you cease trading is minimal (if anything). However imagine if you employ staff, you get a business account with a supplier where you buy plants, your customer base grows and you even secure a contract to work on a new housing estate. As a sole trader you would remain liable for the debts of the business. Your liability now is dramatically increased and should you unexpectedly cease trading without, say, paying employees, settling supplier accounts, or finishing jobs, you would be personally liable to those creditors.


The primary benefit of changing from a sole trader to a limited company is that you will no longer be personally liable for debts that your company might incur. A limited company has its own legal status. This means your customers and suppliers contract with the company and not with you personally. You, the business owner, will typically be a director and a shareholder. Investors in the business can be granted shares and legal documentation can be put in place to dictate the rights and obligations of the directors and shareholders.

There are tax advantages to 'going limited'. Though you will be liable to pay Corporation Tax on profits that the company makes (the rate of which depends on how much profit is made) these rates are significantly lower than those personal rates that you pay as a sole trader. Furthermore, as a company you can pay yourself (as a shareholder) dividends instead of a salary, which can, in certain circumstances, be more tax advantageous.

Additionally, having limited company status may be regarded by your customers (and your competitors) as being more professional. It demonstrates you take yourself and your business seriously and is likely to instil confidence in existing and potential new customers.

Professional legal advice should be sought when setting up a limited company to ensure that the transition is right for your business, you understand the requirement to report to Companies House and that appropriate legal documentation is in place.

Martyn can be contacted by email on mgooch@rohanolicitors.co.uk or by telephone 01444 450901.



The Wasp Man
The Flea Man
The Insect Man
The Rat Man
The Mouse Man
The Bedbug Man
The Squirrel Man
The Mole Man

**The Pest Man
for
Lindfield**

**Qualified, Insured,
over 30 years experience.
Family run business**

**01444 420031
07900980194**



Local Builders in Mid Sussex

Helme & Hallett Ltd

We specialise in the alteration, refurbishment and extension of domestic properties of a mature age, matching materials and style of 50 - 500 years.

Telephone 01444 454776

www.helmeandhallett.co.uk

Constructing solutions for our clients with care

Members of the National Federation of Builders



Sudoku #22

| | | | | | | | | |
|---|---|---|---|---|---|---|---|---|
| | | | | 6 | | | | |
| | 4 | 3 | | | | | 6 | |
| 9 | | | 1 | | | 7 | | |
| | 1 | 9 | | | 8 | | | 5 |
| | | | | 1 | | | 3 | 2 |
| 3 | | 8 | | | | | | |
| | | 1 | 7 | | | | | |
| | | | 6 | | | 9 | | 3 |
| 8 | | | | 2 | 9 | | 1 | 7 |

Find the solution to #22 in next month's magazine

Courtesy of <http://andrews-sudoku.blogspot.co.uk>

#21 Solution

| | | | | | | | | |
|---|---|---|---|---|---|---|---|---|
| 3 | 4 | 2 | 9 | 7 | 1 | 5 | 6 | 8 |
| 8 | 6 | 1 | 4 | 2 | 5 | 7 | 3 | 9 |
| 5 | 7 | 9 | 8 | 3 | 6 | 4 | 1 | 2 |
| 1 | 8 | 6 | 2 | 4 | 7 | 3 | 9 | 5 |
| 4 | 3 | 7 | 5 | 6 | 9 | 8 | 2 | 1 |
| 9 | 2 | 5 | 1 | 8 | 3 | 6 | 7 | 4 |
| 2 | 5 | 3 | 6 | 9 | 4 | 1 | 8 | 7 |
| 7 | 9 | 4 | 3 | 1 | 8 | 2 | 5 | 6 |
| 6 | 1 | 8 | 7 | 5 | 2 | 9 | 4 | 3 |

Make your birthday party or special event go off with a crackle!
Book local a *cappella* group **NO STRINGS ATTACHED** for your musical entertainment.



We sing sweet harmonies without the aid of musical instruments.
All your favourites from the 1960's, 70's and 80's!

Contact us through our website at www.nostringsattached.org.uk or phone 07766 548717

What's on this month

AT KING EDWARD HALL

AND ELSEWHERE

May

- 2nd **Charity Gin Tasting Evening** – 7pm
A night of Gin Tasting and discovering why this drink is getting a new lease of life and how Gin's revival has led to an explosion of micro distilleries in the past few years (£25 pp 01444 470726 or book via Eventbrite)
- 3rd **Lindfield Country Market** – 10-11.15am
(Sheila Hobbs 01444 483396)
- 5th **Jumble Sale** – 12noon-2pm
Haywards Heath Lions Club - Donations of jumble at the hall between 8.30-11.30am. Excellent refreshments and tombola too
- 6th **Sale of Teak Garden Furniture**
- 9th **Lindfield Horticultural Society** – 8pm
'Organic Growing' a talk by Sandy Wansbury of Africa Organics. Sandy will talk about the activities of Africa Organics, an organisation established in 2004 to assist people in remote African villages to establish permanent sustainable communities. All welcome Entry £3 (£1 members)
- 10th **Lindfield Country Market** – 10-11.15am
- 12th **LHS Coffee Morning** –
(Chris Gurr 01444 482739)
- 17th **Lindfield Country Market** – 10-11.15am
- 19th **Verdi's Rigoletto** – 7.30pm
Performed by Heber Opera
(www.heberopera.co.uk or 01435 866737)
- 22nd **Lindfield Flower Club** – 2.15pm
'Pots of Colour' with Pat MacDonald
- 24th **Lindfield Country Market** – 10-11.15am
- 24th **The Greatest Showman (U)** – 7.30pm
Film show evening – features interval and tea/cake (Tickets £6 from Tufnells from 30th April)
- 26th **Lindfield Dramatic Club** – 8pm
An evening of rehearsed readings from the works of Charles Dickens, followed by a Victorian Melodrama. This event, for members, friends and supporters of the dramatic club and includes a fish and chip supper. Bar open from 7.30pm. (Tickets £11 from 01444 831512)

Please refer to the King Edward Hall notice board for additional information regarding the above events. If you would like to hire the King Edward Hall please contact the Honorary Booking Secretary for further information on telephone number 01444 483266 or by email on bookings@kingedwardhall.org.uk

May

- 1st **NHS Retirement Fellowship** – 10.15am
Franklands Village Hall, RH16 3RS - AGM with speaker Marianne Griffiths , Chief Executive , Brighton and Sussex University Hospitals NHS Trust (New members welcome)
- 6th **10 mile run** – 10.30am
Start from Victoria Park, HH
(www.midsussexmarathon.co.uk)
- 6th **Community Orchestra Concert** – 3pm
Warden Park Academy, Cuckfield - Ensemble Reza's Community Orchestra of more than 80 musicians (Tickets £8/£3 from Carousel Music)
- 16th **The Arts Society Mid Sussex** – 10.15am
Clair Hall – 'The Role of the Arts in the Cycle of Crime, Prison and Reoffending' lecture by Angela Findlay (non members welcome: £7 on the door)
- 16th **Mid Sussex Franco-British Society** – 8pm
Clair Hall, Haywards Heath - An illustrated talk
(www.midsussexfrancobritish.co.uk)
- 18th-
20th **The Attic Art Club Exhibition**
Ditchling Village Hall - Original art work, glass designs, wood turning, jewellery, sculpture
- 20th **Messy Church** – 4-6pm
Lindfield URC - Activities, fun and food (dinner). No booking, No fee. Under 14's must bring an adult (Danny Goodall on 07443 438970)
- 26th-
28th **Wild Wood Festival**
Wakehurst Place (<http://bit.ly/2q5w61e>)
- 28th **Lindfield Village Run** – from 8.30am
Hickmans Lane Playing Field – 5k Family Fun Run and 10k Cross Country Run. Pre-register to avoid disappointment – limited numbers this year. Refreshments available for runners and supporters. 5k start = 10.30am (£7), 10k start = 10.45am (£15) - (www.kingedwardhall.org.uk)
- 29th-
1st **Holiday Club** – 1.30-4.30pm
Lindfield URC - Are you 5 to 11yrs and can bring an adult? Then be a 'Kingdom Builder' over four afternoons with plenty of challenges to enjoy. (Danny Goodall on 07443 438970)

June

- 2nd **Lindfield Village Day** – from 12noon
Procession starts from Hickmans Lane Playing Fields at 12.45pm, stalls and fun on the Common throughout the afternoon
(www.kingedwardhall.org.uk)

Our advertisers

CALL THEM!

Services

| | |
|--|----|
| Renaissance Retirement..... | 2 |
| Nice N Stripy (garden care)..... | 3 |
| Rohan Solicitors..... | 5 |
| C&G Plumbers..... | 6 |
| Swan Press..... | 8 |
| Lock Assist (locksmiths)..... | 8 |
| JMS Tiling..... | 9 |
| Claire Nash Solicitor..... | 10 |
| EDR (construction)..... | 14 |
| Hilary May (garden designer)..... | 17 |
| AJ Mullen (builder)..... | 18 |
| The IT Girl (computer support)..... | 18 |
| BJN Roofing..... | 18 |
| Oven Cleaners Sussex..... | 20 |
| Scissor Sisters (curtains)..... | 21 |
| Odd Job Man..... | 21 |
| SPB Plumbing & Heating..... | 23 |
| Sow Sussex (garden care)..... | 23 |
| Masters & Son (funeral directors)..... | 25 |
| Belle Casa (cleaning)..... | 28 |
| Heather Martin (garden design)..... | 28 |
| Jim Avis (decorator)..... | 29 |
| Norsat (TV/satellite)..... | 30 |
| Absolute IT (computer support)..... | 30 |
| Trust in Blue (handymen)..... | 30 |
| TEXA (business support)..... | 34 |
| G&S Roofing..... | 35 |
| Drayton Plumbing & Heating..... | 35 |
| Move Revolution (estate agents)..... | 35 |
| PRB Accountants..... | 37 |
| Strategic Marcomms (websites)..... | 39 |
| Homesmiths (interior designers)..... | 40 |
| CW Electrical..... | 41 |
| Gray Hooper Holt (solicitors)..... | 42 |
| Everest (home improvements)..... | 43 |
| Whittaker Paving..... | 43 |
| Lucy Locksmith..... | 45 |
| SJP Painting & Decorating..... | 48 |
| Digital Berry (websites)..... | 48 |
| Lindfield Motors..... | 49 |
| Promedica24 (live-in care)..... | 49 |
| Tara Fraser (mortgages)..... | 52 |

| | |
|-------------------------------------|----|
| Toby & Fly (dog grooming)..... | 56 |
| Everycare Mid Sussex (care)..... | 56 |
| VMP Window Cleaning..... | 57 |
| Strawberry Finance (mortgages)..... | 59 |
| The Pest Man..... | 60 |
| Helme & Hallett (builders)..... | 60 |
| Mark Revill (estate agents)..... | B |

Retail

| | |
|-----------------------------------|----|
| Paul's (greengrocer)..... | 15 |
| RTFJ (bespoke jewellery)..... | 22 |
| KPS (compost)..... | 26 |
| Rod Gaskin Ltd (lawn mowers)..... | 31 |
| Abi Gurney Hat Hire..... | 41 |
| Cuckfield i Wear (glasses)..... | 45 |

Out & About

| | |
|--|----|
| Blackthorns School..... | 4 |
| Compton House Nursing Home..... | 4 |
| Jeremy's Restaurant..... | 29 |
| Ardingly Activity Centre (sailing)..... | 34 |
| Borde Hill Garden..... | 36 |
| South of England Show..... | 38 |
| Wakehurst Place..... | 41 |
| Opera Brava..... | 51 |
| Lindfield Village Run..... | 52 |
| No Strings Attached (musical group)..... | 61 |

Education/Childcare

| | |
|--|----|
| Norto5 Kidz (nursery)..... | 3 |
| Ardingly Training Centre (swimming)..... | 6 |
| Lindfield Art Studio..... | 11 |
| Magikats (tutoring)..... | 11 |
| Gielgud Academy of Performing Arts..... | 55 |

Health/Lifestyle

| | |
|------------------------------------|----|
| Linear Health & Fitness..... | 7 |
| Six Physio..... | 17 |
| Talk for Change..... | 17 |
| Emily is (coaching)..... | 22 |
| Flo Paul Podiatry..... | 24 |
| Lindfield Chiropractic Centre..... | 31 |
| Jakki Todd (beautician)..... | 34 |
| Denziloe (hair designers)..... | 53 |

Photo Quiz answers from p54: 1) The railings at Malling Priory, 2) Ironwork at the entrance to All Saints churchyard, 3) South Downs Cellars, 4) Humphrey's Bakery, 5) The shadow from the sign at Viking Cottage, 6) King Edward Hall door handle, 7) Turfells Home Store, 8) 74 High Street

THINKING OF
SELLING YOUR HOUSE?

OUR SERVICE WILL
bowl
YOU OVER!

| BATSMAN | TOTAL | BATSMAN |
|----------|-------|---------|
| | 22 | |
| VISITORS | WIKTS | OVERS |
| 198 | 1 | 10 |

**We are serious about helping you to make that move.
If you wish to know how much your home is worth,
we can provide a free property valuation.**

42 High Street, Lindfield t: 01444 484564
w: markrevill.com e: lindfield@markrevill.com



Mark Revill & Co

YOUR LOCAL PROPERTY EXPERTS